

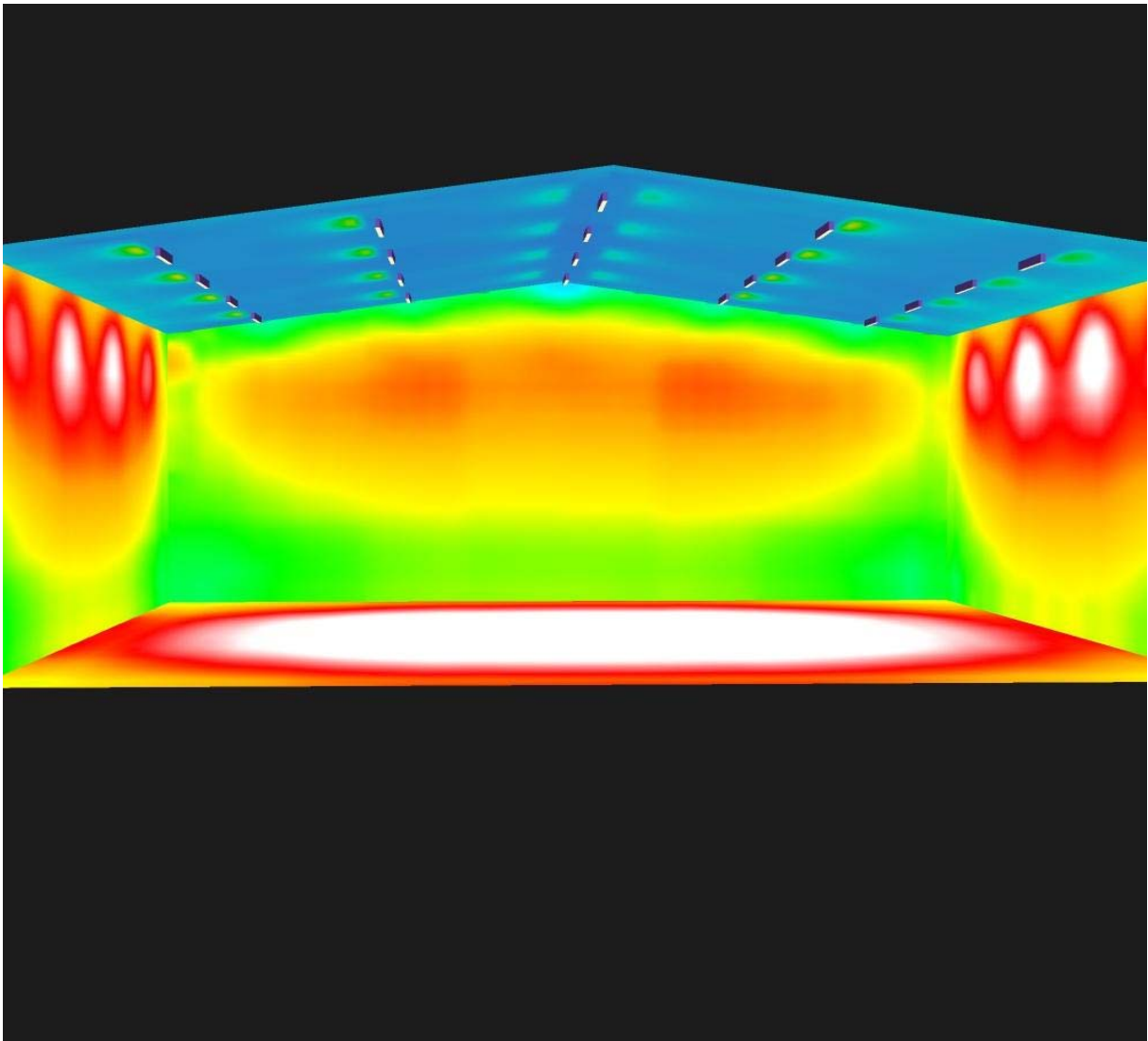


# AccessFixtures

High-Performance Lighting Solutions

[AccessFixtures.com](http://AccessFixtures.com) 800.468.9922 [Sales@AccessFixtures.com](mailto:Sales@AccessFixtures.com)

## **AUTO DETAIL SHOP 20 EPTA 90, 5000K 92 av, 58 min, 112 max fc**



The simulation and result is based on an ideal environment, the actual lighting performance may be affected by actual environment. The lighting simulation is for reference only.:

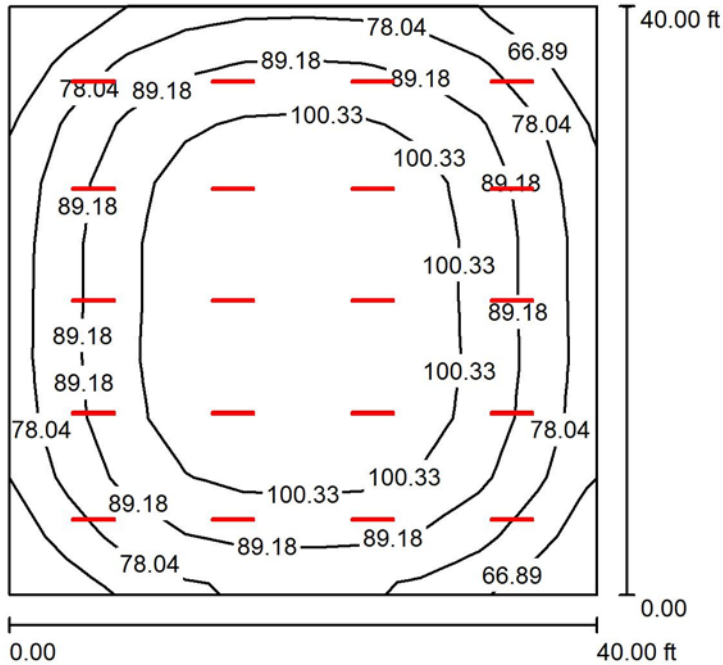


## Table of contents

AUTO DETAIL SHOP	
Project Cover	1
Table of contents	2
<b>Room 1</b>	
Summary	3
Luminaires (layout plan)	4
Luminaires (coordinates list)	5
3D Rendering	6
False Color Rendering	7
<b>Room Surfaces</b>	
<b>Workplane</b>	
Value Chart (E)	8



**Room 1 / Summary**



Height of Room: 18.000 ft, Light loss factor: 0.90

Values in Footcandles, Scale 1:157

Surface	$\rho$ [%]	$E_{av}$ [fc]	$E_{min}$ [fc]	$E_{max}$ [fc]	$u_0$
Workplane	/	92	58	112	0.629
Floor	20	84	53	103	0.626
Ceilings (2)	70	27	22	59	/
Walls (4)	50	61	29	94	/

**Workplane:**

Height: 2.625 ft  
Grid: 10 x 10 Points  
Boundary Zone: 0.000 ft

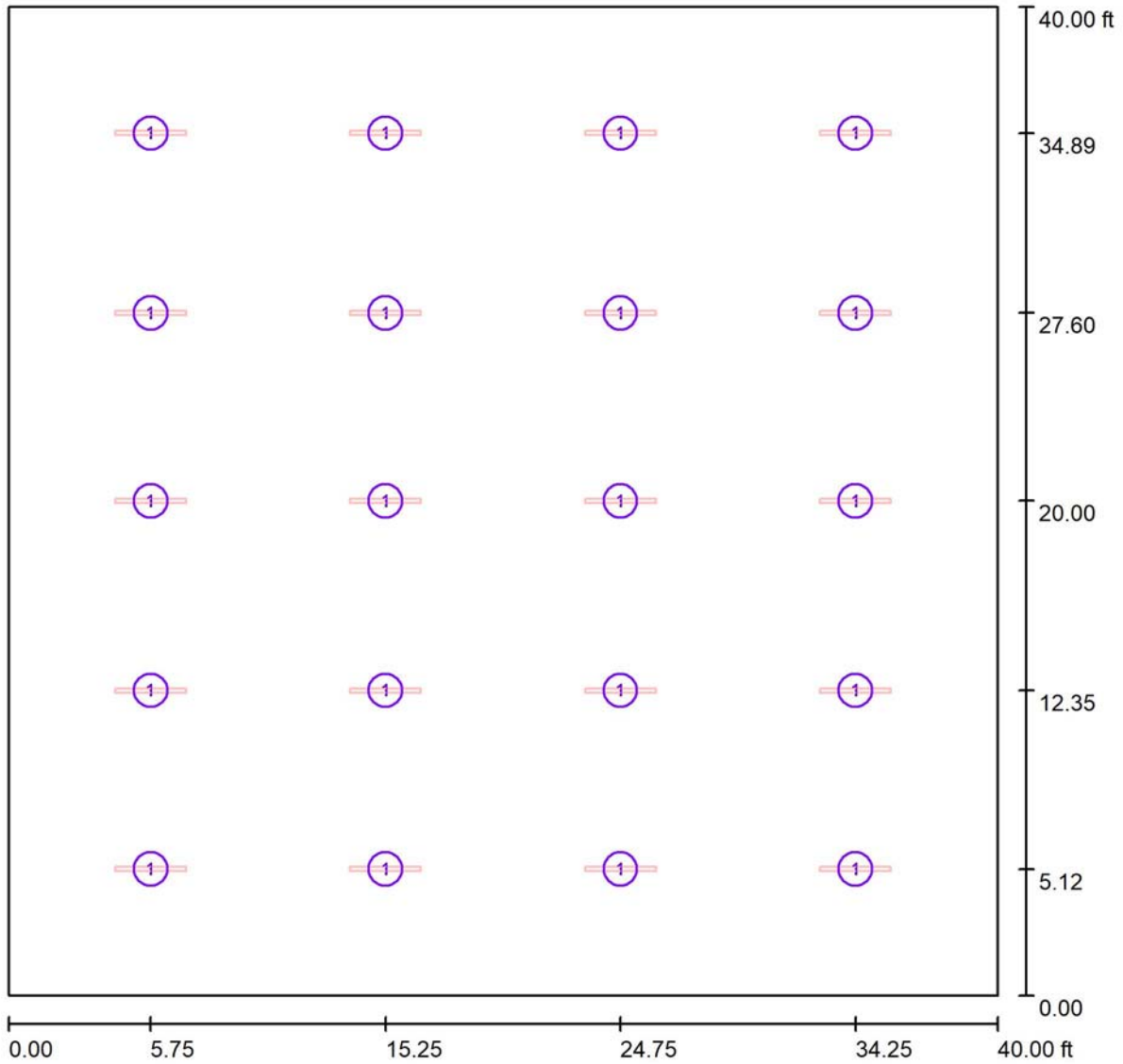
**Luminaire Parts List**

No.	Pieces	Designation (Correction Factor)	$\Phi$ (Luminaire) [lm]	$\Phi$ (Lamps) [lm]	P [W]
1	20	AF72XBCA90-T5D1 90W (1.000)	10850	10850	86.2
			Total: 217009	Total: 217000	1724.0

Specific connected load: 1.08 W/sq ft = 0.12 W/sq ft/10 fc (Ground area: 1600.04 sq ft)



**Room 1 / Luminaires (layout plan)**



Scale 1 : 88

**Luminaire Parts List**

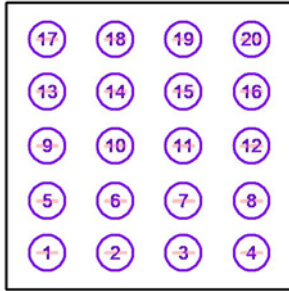
No.	Pieces	Designation
1	20	AF72XBCA90-T5D1 90W



**Room 1 / Luminaires (coordinates list)**

**AF72XBCA90-T5D1 90W**

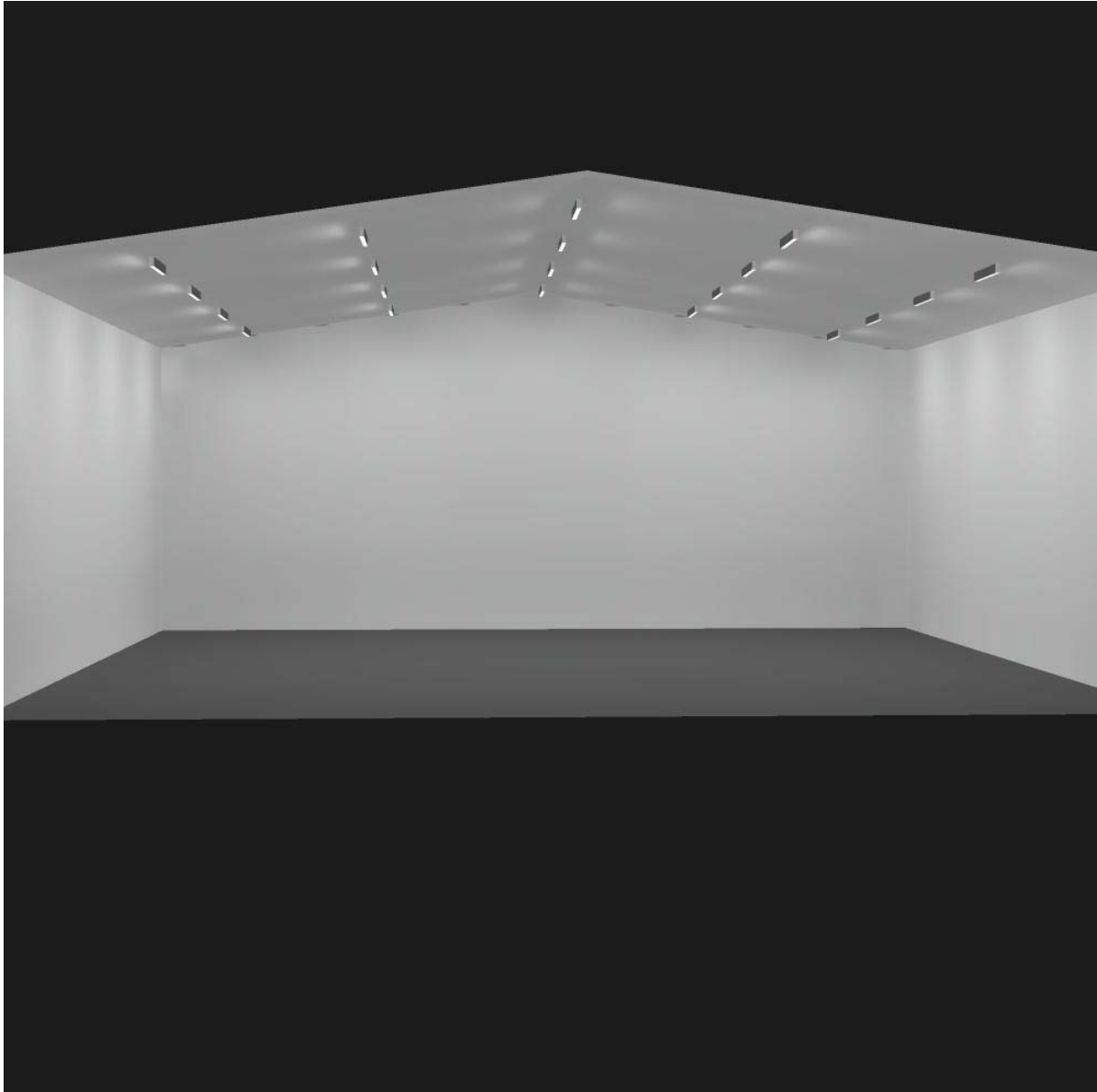
10850 lm, 86.2 W, 1 x 1 x V5 5000K (Correction Factor 1.000).



No.	Position [ft]			Rotation [°]		
	X	Y	Z	X	Y	Z
1	5.746	5.116	15.534	0.0	0.0	0.0
2	15.246	5.116	15.534	0.0	0.0	0.0
3	24.746	5.116	15.534	0.0	0.0	0.0
4	34.246	5.116	15.534	0.0	0.0	0.0
5	5.746	12.346	16.694	0.0	0.0	0.0
6	15.246	12.346	16.694	0.0	0.0	0.0
7	24.746	12.346	16.694	0.0	0.0	0.0
8	34.246	12.346	16.694	0.0	0.0	0.0
9	5.746	20.003	17.716	0.0	0.0	0.0
10	15.246	20.003	17.716	0.0	0.0	0.0
11	24.746	20.003	17.716	0.0	0.0	0.0
12	34.246	20.003	17.716	0.0	0.0	0.0
13	5.746	27.605	16.694	0.0	0.0	0.0
14	15.246	27.605	16.694	0.0	0.0	0.0
15	24.746	27.605	16.694	0.0	0.0	0.0
16	34.246	27.605	16.694	0.0	0.0	0.0
17	5.746	34.887	15.617	0.0	0.0	0.0
18	15.246	34.887	15.617	0.0	0.0	0.0
19	24.746	34.887	15.617	0.0	0.0	0.0
20	34.246	34.887	15.617	0.0	0.0	0.0

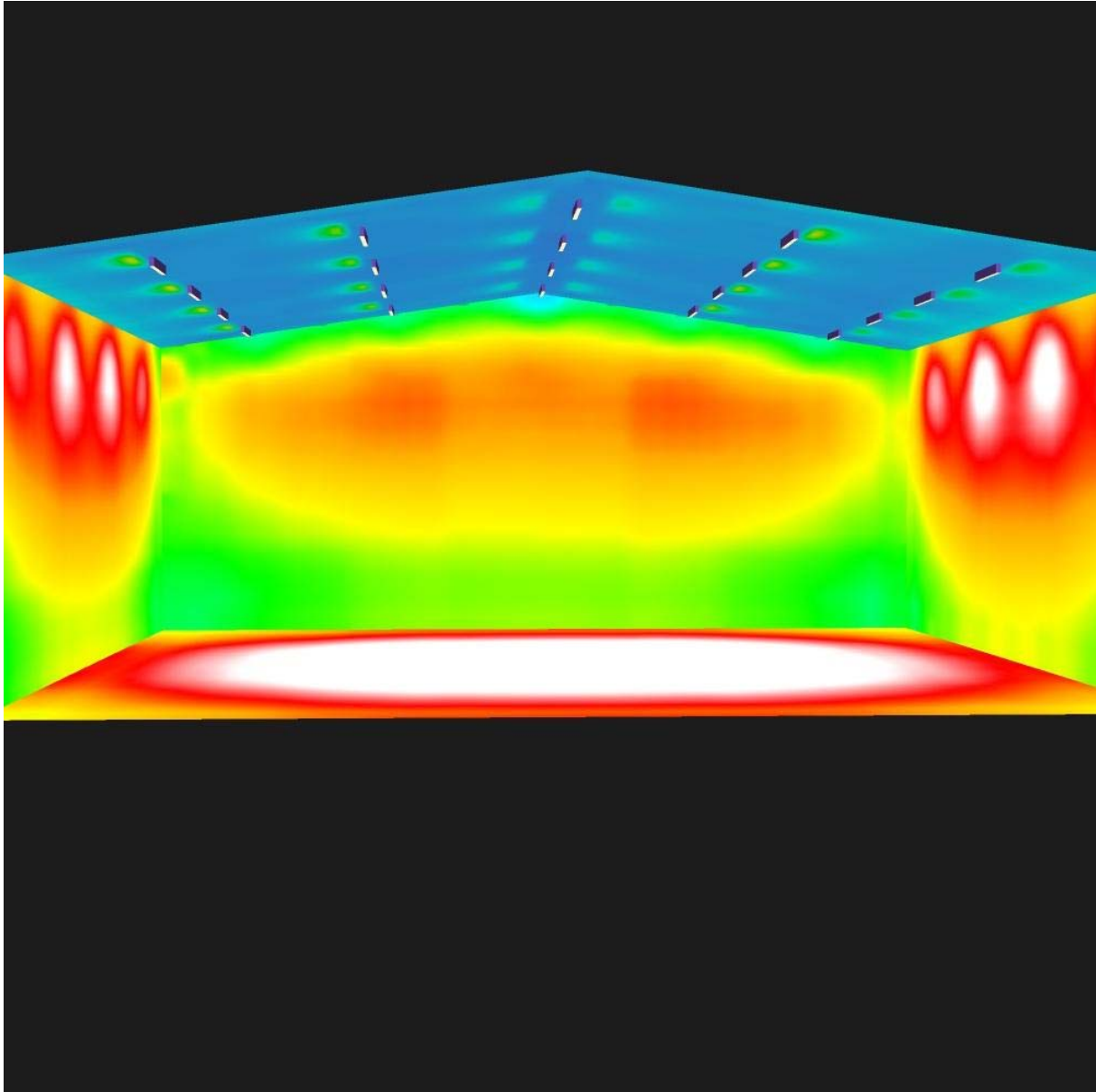


## Room 1 / 3D Rendering





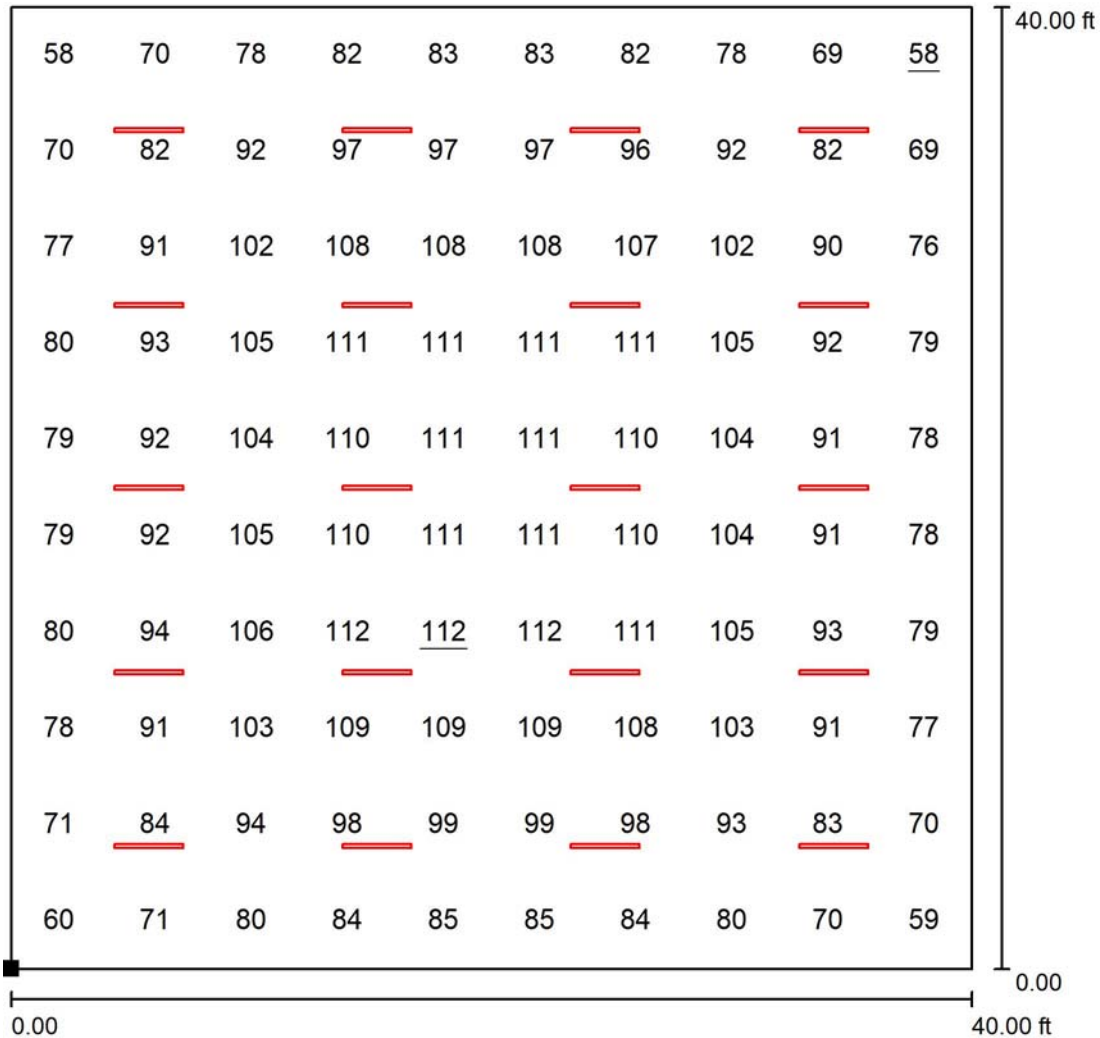
**Room 1 / False Color Rendering**



0 11.25 22.50 33.75 45.00 56.25 67.50 78.75 90.00 fc



**Room 1 / Workplane / Value Chart (E)**



Values in Footcandles, Scale 1 : 96

Position of surface in room:  
Marked point:  
(0.000 ft, 0.000 ft, 2.625 ft)



Grid: 10 x 10 Points

$E_{av}$ [fc]	$E_{min}$ [fc]	$E_{max}$ [fc]	u0	$E_{min} / E_{max}$
92	58	112	0.629	0.516