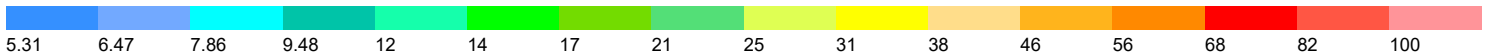
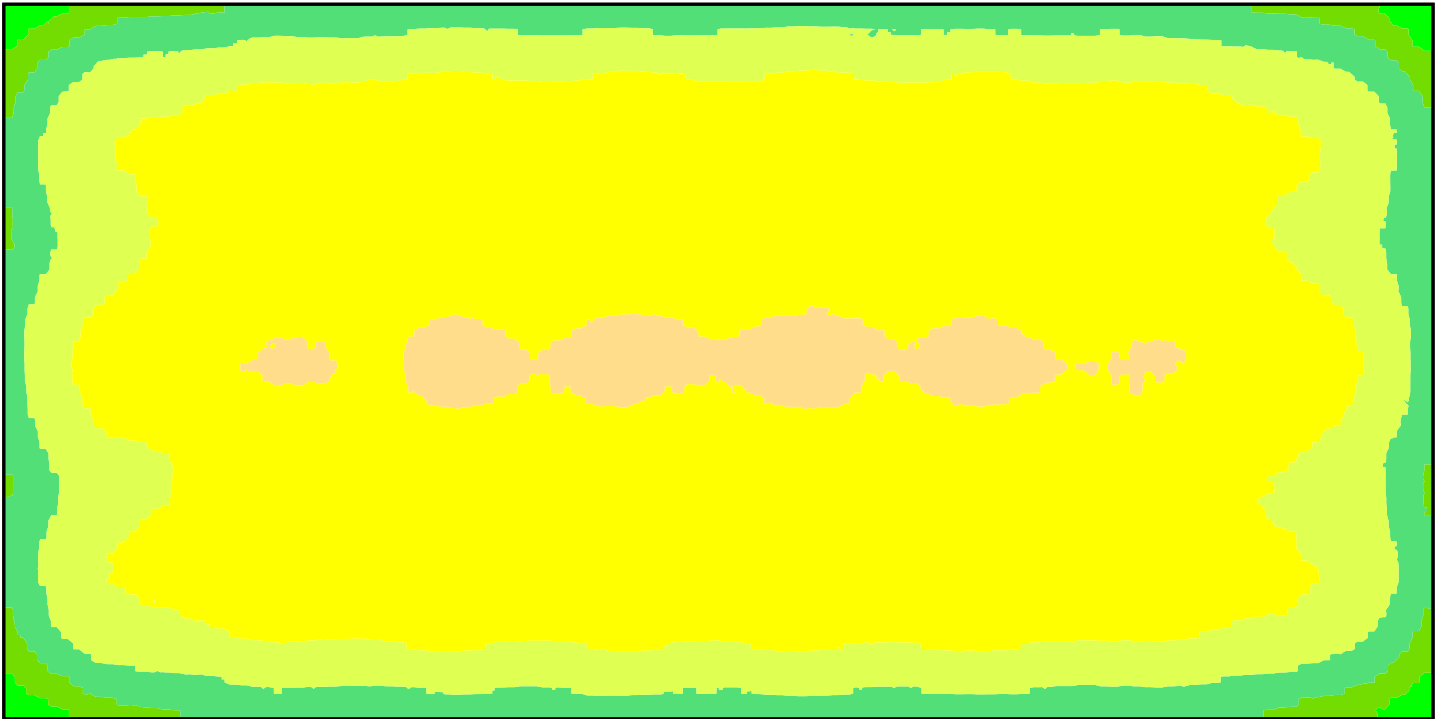


100' x 200' Warehouse
25' Mounting Height
31fc - 2.77 Max/Min



This photometric report will be generated using methods recommended by the Illuminating Engineering Society of North America (IESNA). The calculations in this report will be based on data provided by a third party. The accuracy of this photometric report is dependent on the accuracy of the data provided. Enduser environment and application (including, but not limited to voltage variation and dirt accumulation) can cause actual photometric performance to differ from the performance calculated using the data provided. This report will be provided without warranty as to accuracy, completeness, reliability, or otherwise. In no event will Access Fixtures be responsible for any loss resulting from any use of this report.

Content

100' x 200' Warehouse

Luminaire list..... 3

Views..... 4

Site 1

Building 1

Storey 1

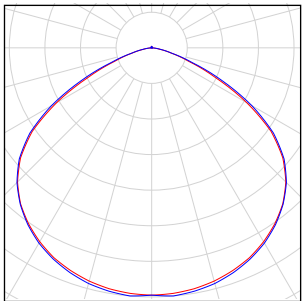
Room 1

Summary..... 6

Luminaire layout plan..... 7

Workplane (Room 1) / Perpendicular illuminance (adaptive)..... 8

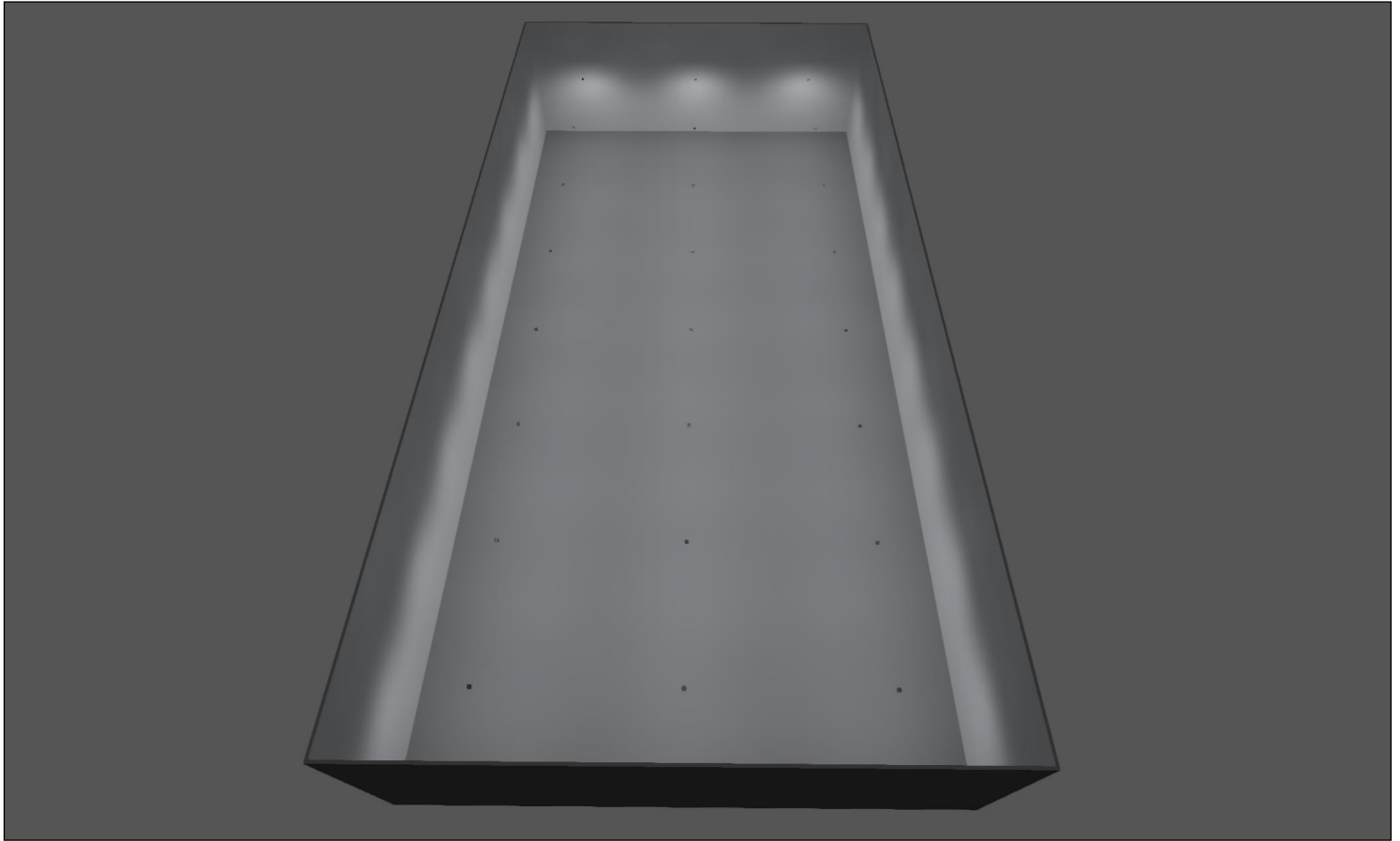
100' x 200' Warehouse

Quantity	Luminaire (Luminous emittance)		
24	Access Fixtures - HIIO 240 AF38XVPL-HBU01N-240WAN-YYK-BL HIIO 240 High Bay Luminaire Luminous emittance 1 Fitting: 1x Light output ratio: 99.89% Lamp luminous flux: 34645 lm Luminaire luminous flux: 34605 lm Power: 233.9 W Luminous efficacy: 148.0 lm/W Colorimetric data 1x: CCT 3000 K, CRI 100	<p>See our luminaire catalog for an image of the luminaire.</p>	

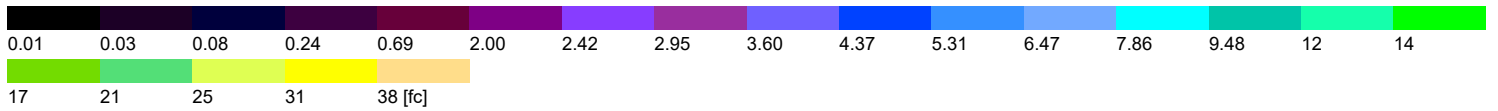
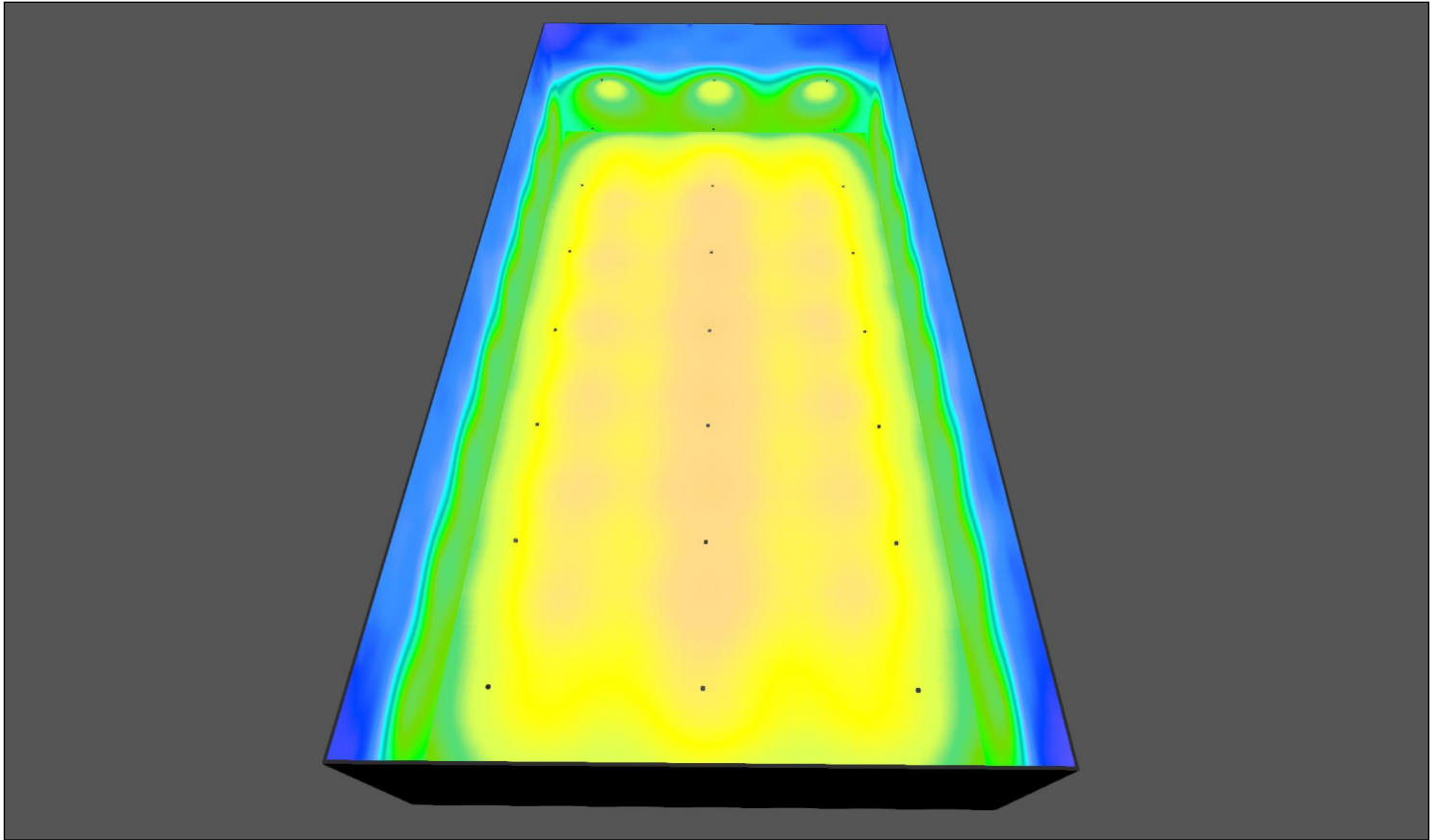
Total lamp luminous flux: 831480 lm, Total luminaire luminous flux: 830520 lm, Total Load: 5613.6 W, Luminous efficacy: 147.9 lm/W

100' x 200' Warehouse

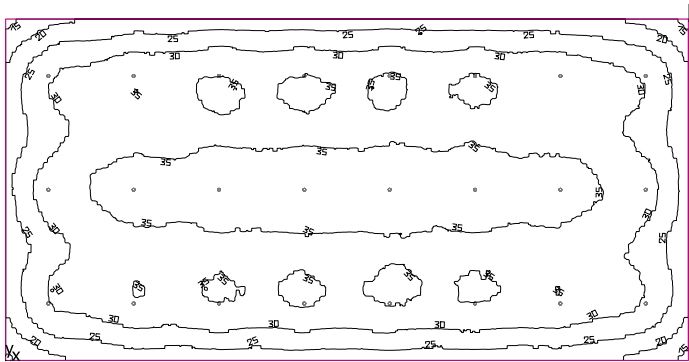
Storey 1 (1)



Storey 1 (2), Illuminance values in [fc]



Room 1



Clearance height: 35.000 ft, Reflection factors: Ceiling 70.0%, Walls 50.0%, Floor 20.0%, Light loss factor: 0.80

Workplane

Surface	Result	Average	Min	Max	Mean/Min	Max/Min
1 Workplane (Room 1)	Perpendicular illuminance (adaptive) [fc] Height: 0.000 ft, Wall zone: 0.000 ft	31.4	14.2	39.2	2.22	2.77

#	Luminaire	Φ(Luminaire) [lm]	Power [W]	Luminous efficacy [lm/W]
24	Access Fixtures - HIIO 240 AF38XVPL-HBU01N- 240WAN-YYK-BL HIIO 240 High Bay Luminaire	34605	233.9	148.0
Total via all luminaires		830520	5613.6	147.9

Lighting power density: 0.28 W/sq ft = 0.08 W/sq ft/10 fc (Floor area of room 20000.47 sq ft)

Consumption: 15450 kWh/a of maximum 65050 kWh/a

The energy consumption quantities do not take into account light scenes and their dimming levels.

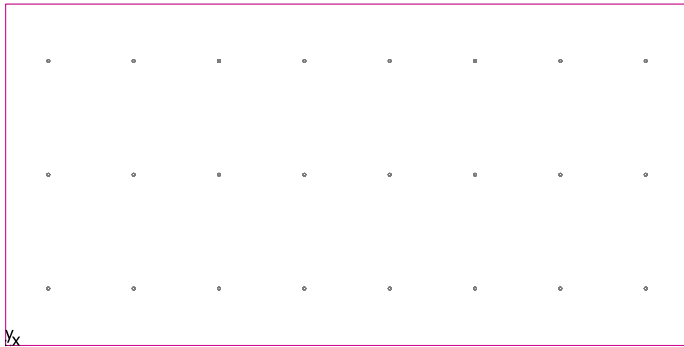
Room 1



Access Fixtures - HIIO 240 AF38XVPL-HBU01N-240WAN-YYK-BL HIIO 240 High Bay Luminaire

No.	X [ft]	Y [ft]	Mounting height [ft]	Light loss factor
1	187.500	83.333	25.000	0.80
2	162.500	83.333	25.000	0.80
3	137.500	83.333	25.000	0.80
4	112.500	83.333	25.000	0.80
5	87.500	83.333	25.000	0.80
6	62.500	83.333	25.000	0.80
7	37.500	83.333	25.000	0.80
8	12.500	83.333	25.000	0.80
9	187.500	50.000	25.000	0.80
10	162.500	50.000	25.000	0.80
11	137.500	50.000	25.000	0.80
12	112.500	50.000	25.000	0.80
13	87.500	50.000	25.000	0.80
14	62.500	50.000	25.000	0.80
15	37.500	50.000	25.000	0.80
16	12.500	50.000	25.000	0.80
17	187.500	16.667	25.000	0.80
18	162.500	16.667	25.000	0.80
19	137.500	16.667	25.000	0.80
20	112.500	16.667	25.000	0.80
21	87.500	16.667	25.000	0.80
22	62.500	16.667	25.000	0.80
23	37.500	16.667	25.000	0.80
24	12.500	16.667	25.000	0.80

Workplane (Room 1) / Perpendicular illuminance (adaptive)



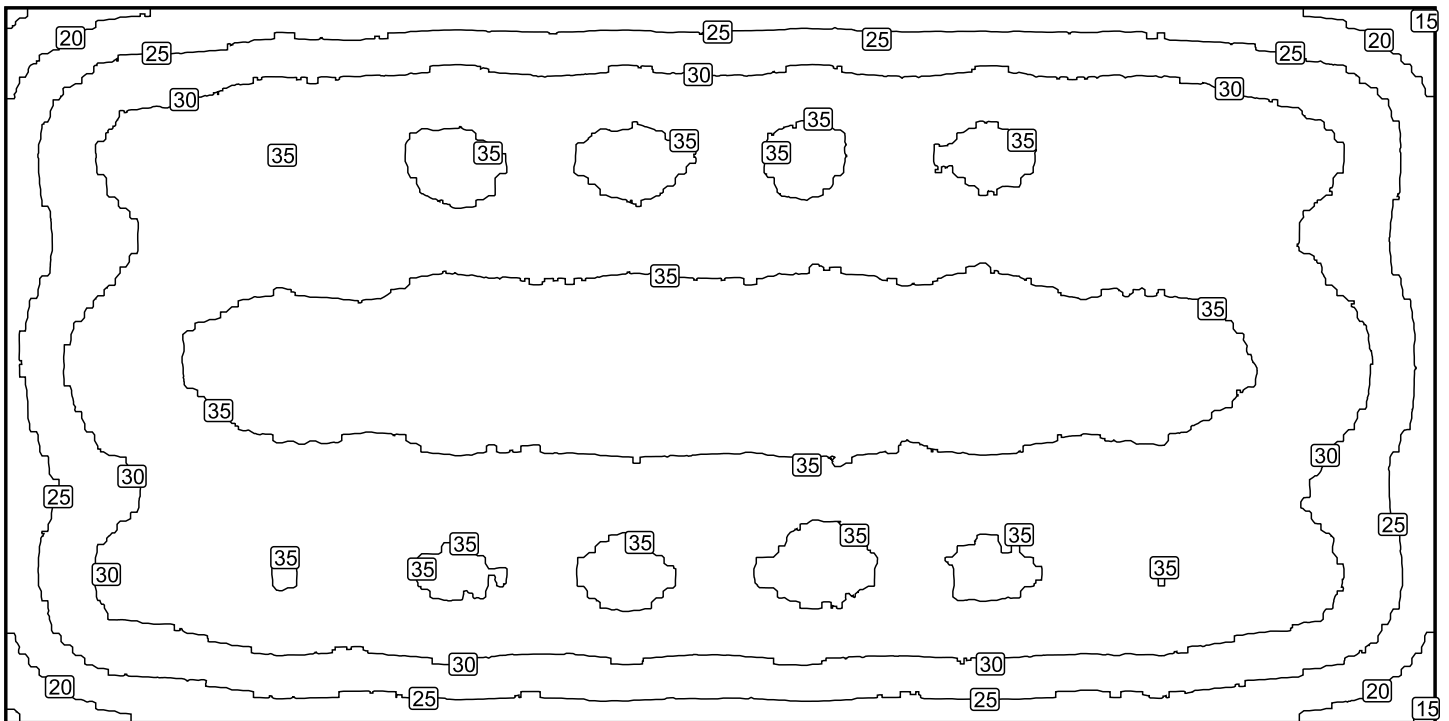
Workplane (Room 1): Perpendicular illuminance (adaptive) (Surface)

Light scene: Light scene 1

Average: 31.4 fc, Min: 14.2 fc, Max: 39.2 fc, Mean/Min: 2.22, Max/Min: 2.77

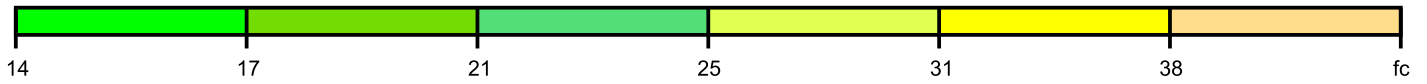
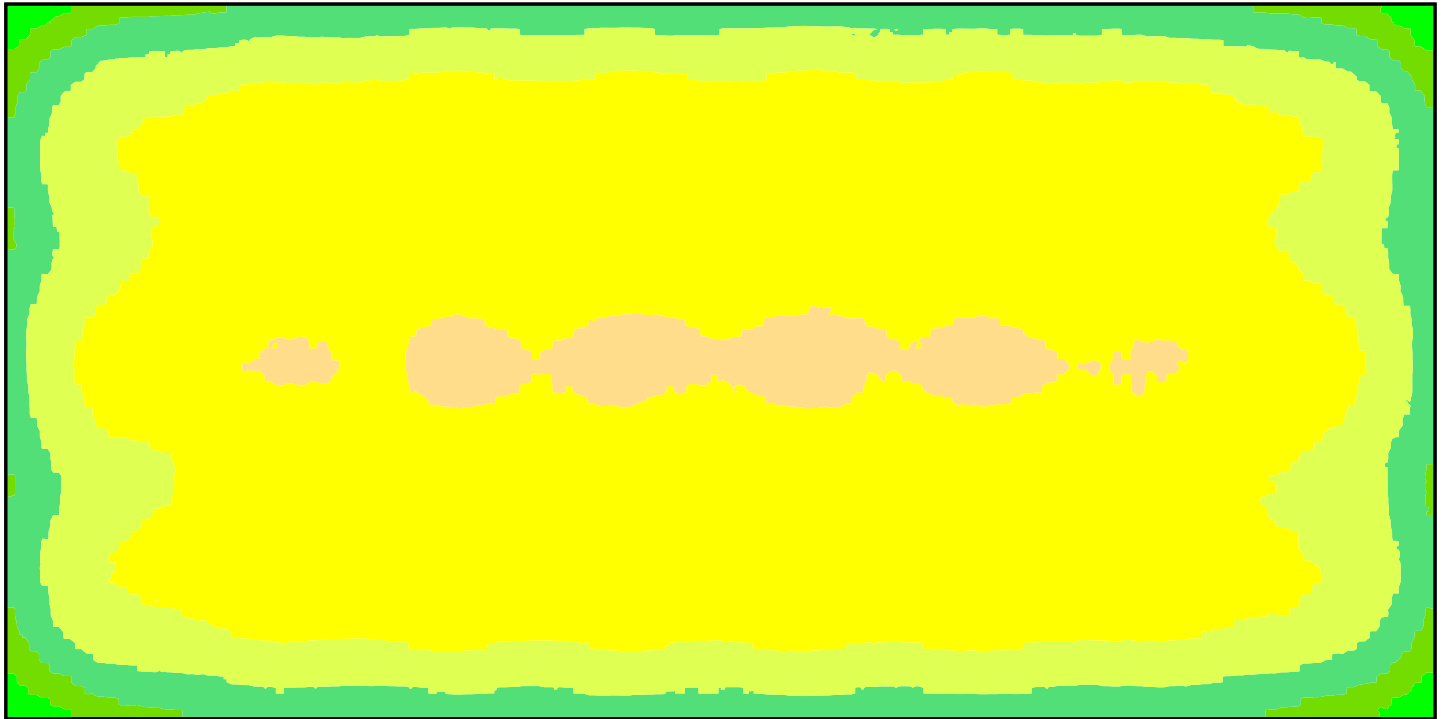
Height: 0.000 ft, Wall zone: 0.000 ft

Isolines [fc]



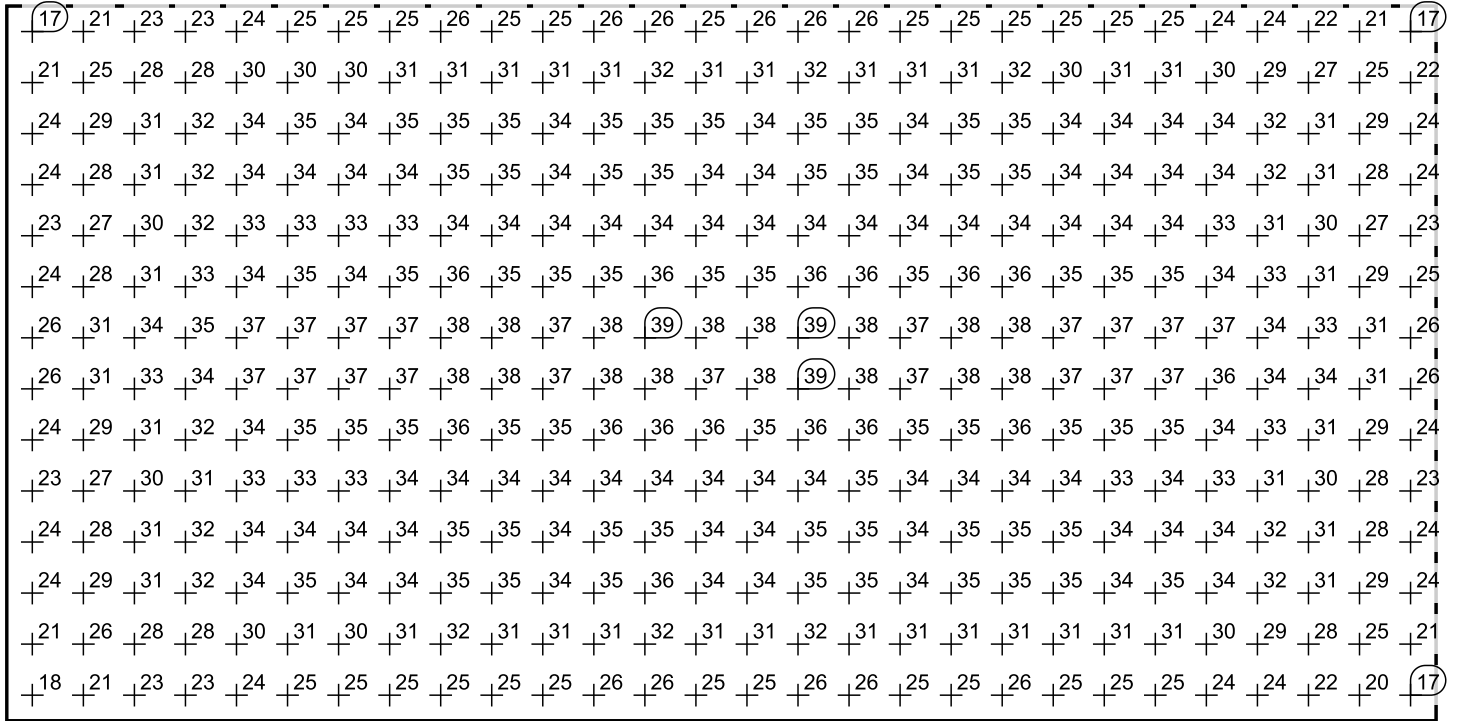
Scale: 1 : 322

False colors [fc]



Scale: 1 : 322

Value grid [fc]



Scale: 1 : 322