



KLOO 44 Mounted at 20' Emits > 1fc 39' Across and 25' Out



This photometric report will be generated using methods recommended by the Illuminating Engineering Society of North America (IESNA). The calculations in this report will be based on data provided by a third party. The accuracy of this photometric report is dependent on the accuracy of the data provided. Enduser environment and application (including, but not limited to voltage variation and dirt accumulation) can cause actual photometric performance to differ from the performance calculated using the data provided. This report will be provided without warranty as to accuracy, completeness, reliability, or otherwise. In no event will Access Fixtures be responsible for any loss resulting from any use of this report.



Access Fixtures
40 Jackson St. Worcester, MA

Operator
Telephone 800-468-9925
Fax
e-Mail Sales@AccessFixtures.com

Table of contents

KLOO 44 20'	
Project Cover	1
Table of contents	2
Luminaire parts list	3
Access Fixtures KLOO 44 AF33XWH15QF1X37U4KC KLOO 44 AF33XWH15 WITH ...	
Luminaire Data Sheet	4
Exterior Scene 1	
3D Rendering	5
False Color Rendering	6
Exterior Surfaces	
Calculation Surface	
Isolines (E, Perpendicular)	7
Greyscale (E, Perpendicular)	8
Value Chart (E, Perpendicular)	9

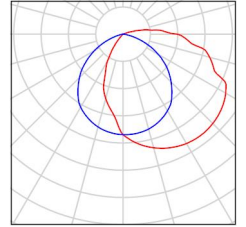
Access Fixtures
40 Jackson St. Worcester, MA

Operator
Telephone 800-468-9925
Fax
e-Mail Sales@AccessFixtures.com

KLOO 44 20' / Luminaire parts list

1 Pieces Access Fixtures KLOO 44
AF33XWH15QF1X37U4KC KLOO 44 AF33XWH15
WITH ONE 37W LED ARRAY, CLEAR LENS 120-
277V 50/60HZ 37W 4000K
Article No.: KLOO 44 AF33XWH15QF1X37U4KC
Luminous flux (Luminaire): 4763 lm
Luminous flux (Lamps): 4763 lm
Luminaire Wattage: 43.3 W
Luminaire classification according to CIE: 96
CIE flux code: 41 70 89 96 100
Fitting: 1 x User defined (Correction Factor 1.000).

See our luminaire catalog
for an image of the
luminaire.



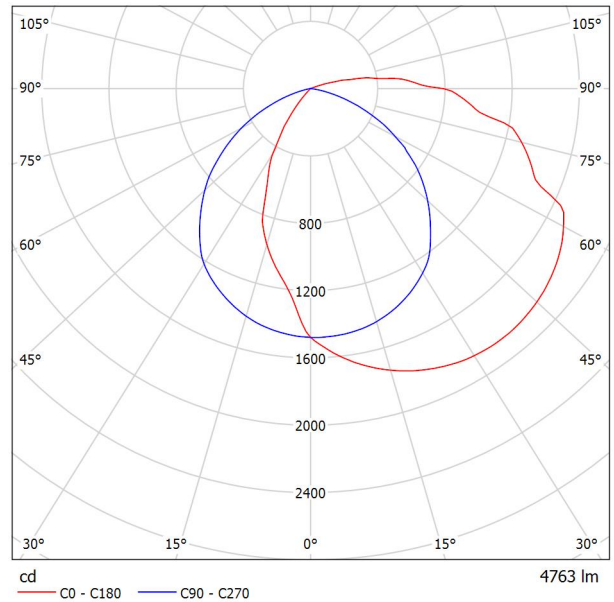
Access Fixtures
40 Jackson St. Worcester, MA

Operator
Telephone 800-468-9925
Fax
e-Mail Sales@AccessFixtures.com

Access Fixtures KLOO 44 AF33XWH15QF1X37U4KC KLOO 44 AF33XWH15 WITH ONE 37W LED ARRAY, CLEAR LENS 120-277V 50/60HZ 37W 4000K / Luminaire Data Sheet

Luminous emittance 1:

See our luminaire catalog for an image of the luminaire.



Luminaire classification according to CIE: 96
CIE flux code: 41 70 89 96 100

Due to missing symmetry properties, no UGR table can be displayed for this luminaire.

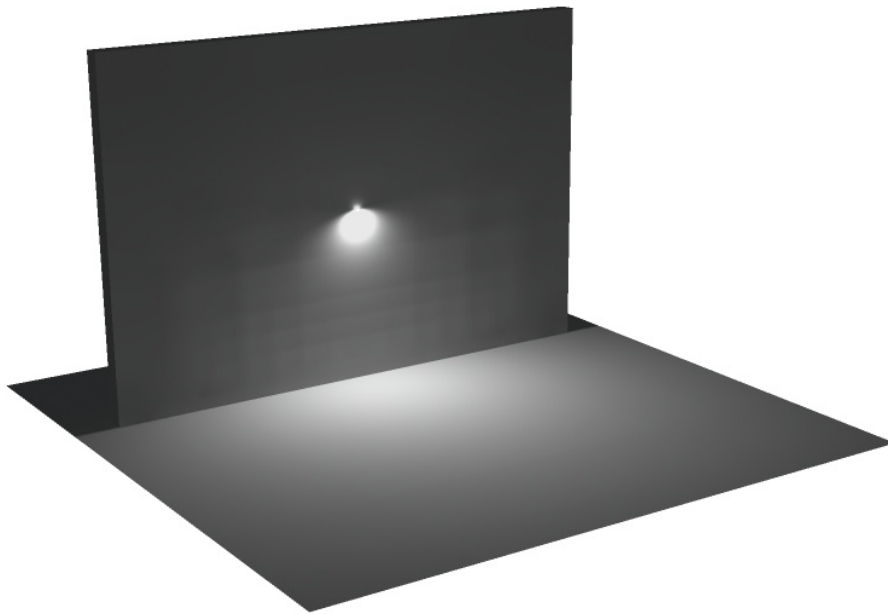
KLOO 44 20'



Access Fixtures
40 Jackson St. Worcester, MA

Operator
Telephone 800-468-9925
Fax
e-Mail Sales@AccessFixtures.com

Exterior Scene 1 / 3D Rendering

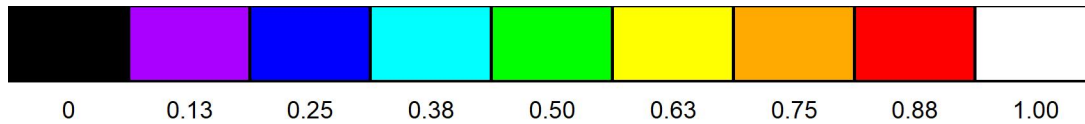
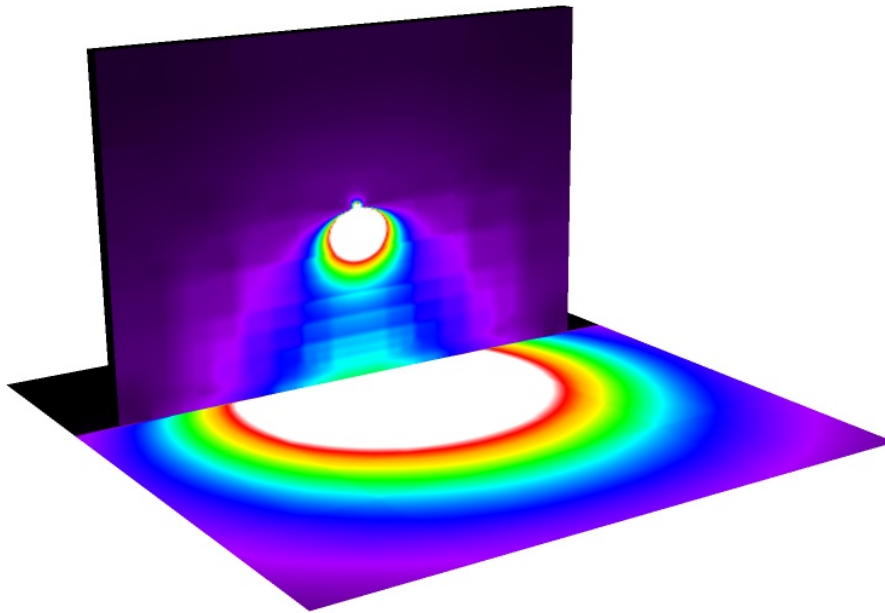




Access Fixtures
40 Jackson St. Worcester, MA

Operator
Telephone 800-468-9925
Fax
e-Mail Sales@AccessFixtures.com

Exterior Scene 1 / False Color Rendering

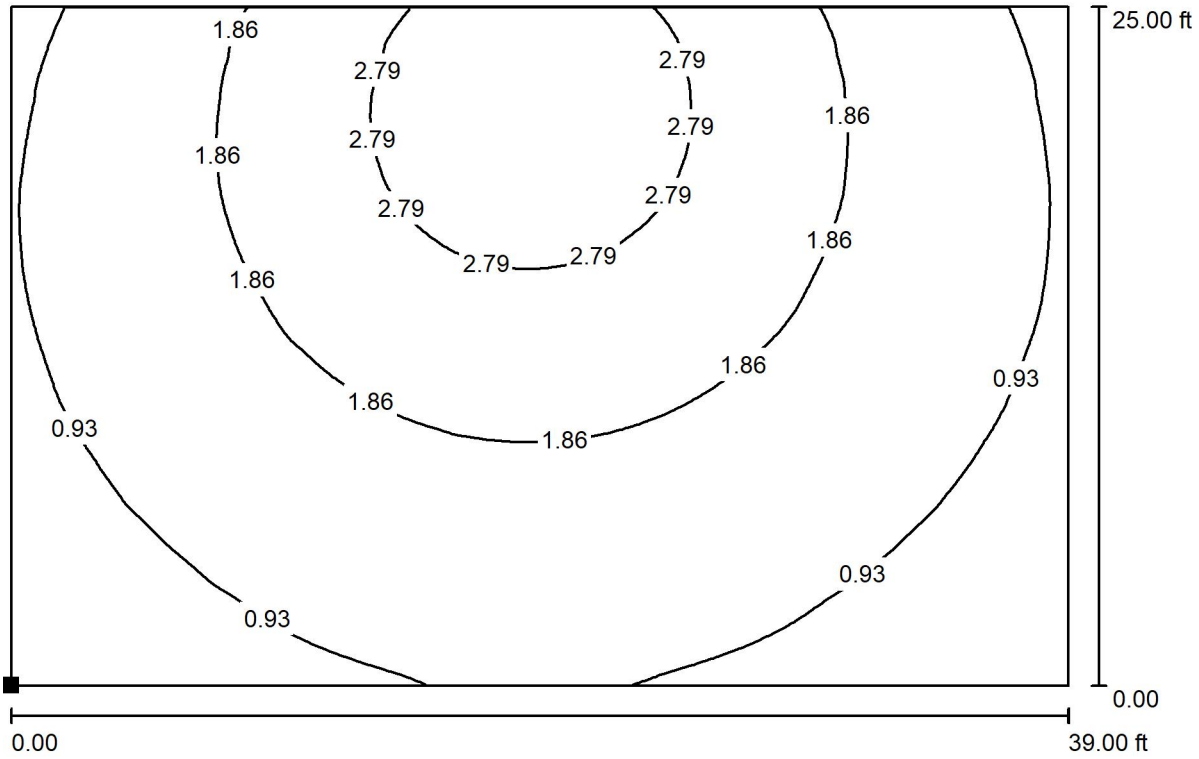


fc

Access Fixtures
40 Jackson St. Worcester, MA

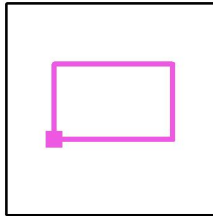
Operator
Telephone 800-468-9925
Fax
e-Mail Sales@AccessFixtures.com

Exterior Scene 1 / Calculation Surface / Isolines (E, Perpendicular)



Values in Footcandles, Scale 1 : 85

Position of surface in external scene:
Marked point:
(6.000 ft, 15.000 ft, 0.000 ft)



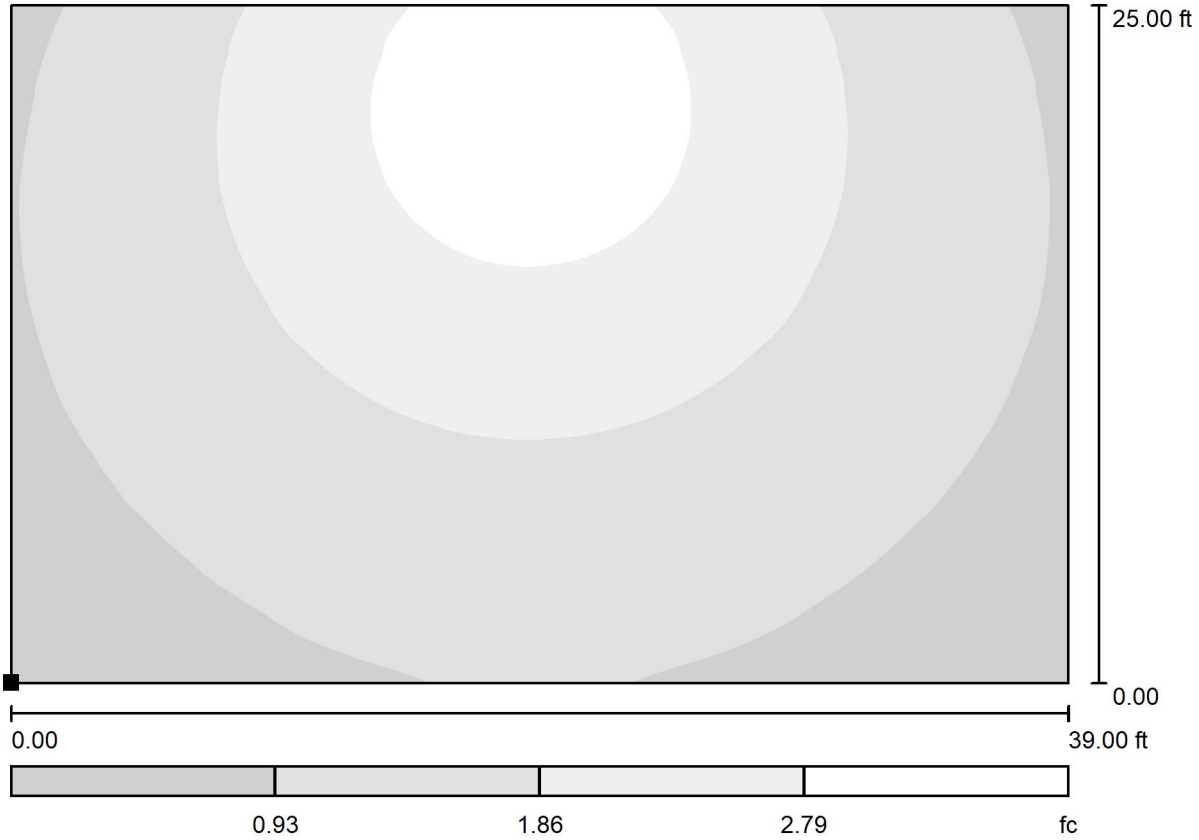
Grid: 128 x 128 Points

E_{av} [fc]	E_{min} [fc]	E_{max} [fc]	u0	E_{min} / E_{max}
1.61	0.52	3.28	0.321	0.157

Access Fixtures
40 Jackson St. Worcester, MA

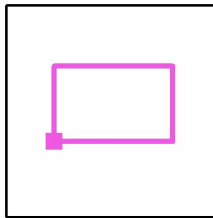
Operator
Telephone 800-468-9925
Fax
e-Mail Sales@AccessFixtures.com

Exterior Scene 1 / Calculation Surface / Greyscale (E, Perpendicular)



Scale 1 : 85

Position of surface in external scene:
Marked point:
(6.000 ft, 15.000 ft, 0.000 ft)



Grid: 128 x 128 Points

E_{av} [fc]
1.61

E_{min} [fc]
0.52

E_{max} [fc]
3.28

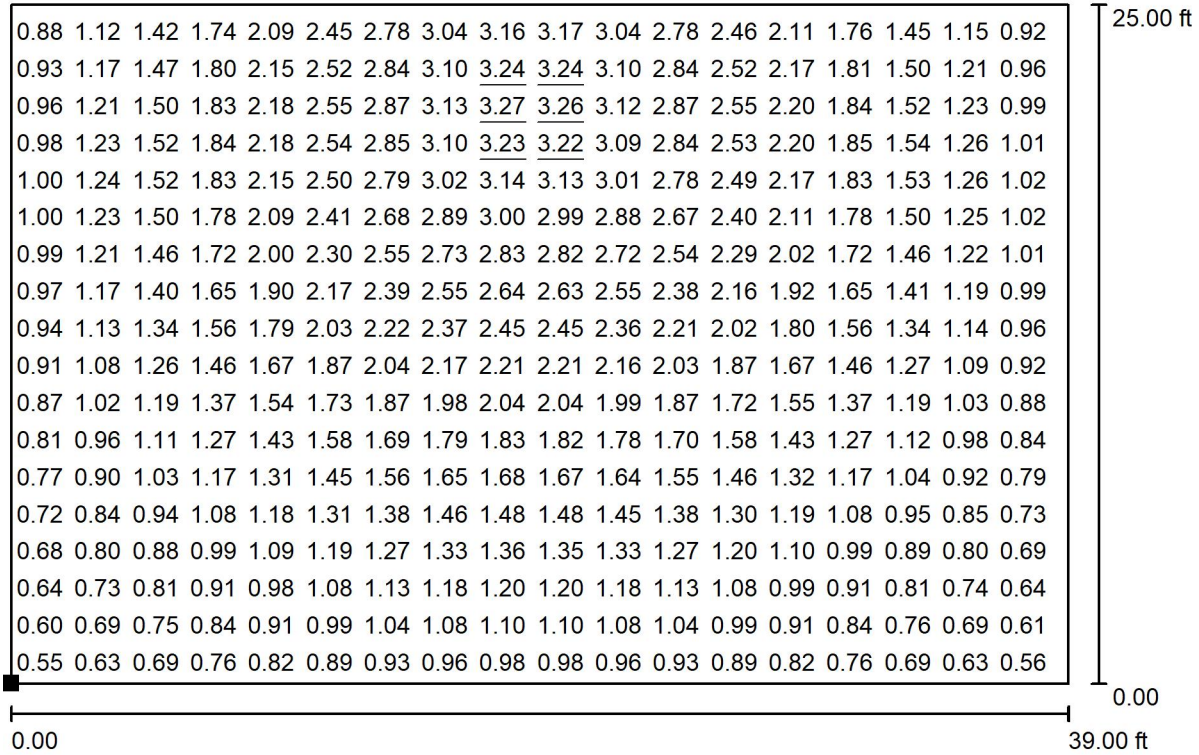
$u0$
0.321

E_{min} / E_{max}
0.157

Access Fixtures
40 Jackson St. Worcester, MA

Operator
Telephone 800-468-9925
Fax
e-Mail Sales@AccessFixtures.com

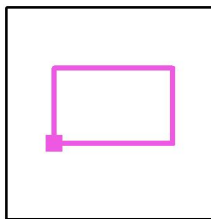
Exterior Scene 1 / Calculation Surface / Value Chart (E, Perpendicular)



Values in Footcandles, Scale 1 : 85

Not all calculated values could be displayed.

Position of surface in external scene:
Marked point:
(6.000 ft, 15.000 ft, 0.000 ft)



Grid: 128 x 128 Points

E_{av} [fc]
1.61

E_{min} [fc]
0.52

E_{max} [fc]
3.28

$u0$
0.321

E_{min} / E_{max}
0.157