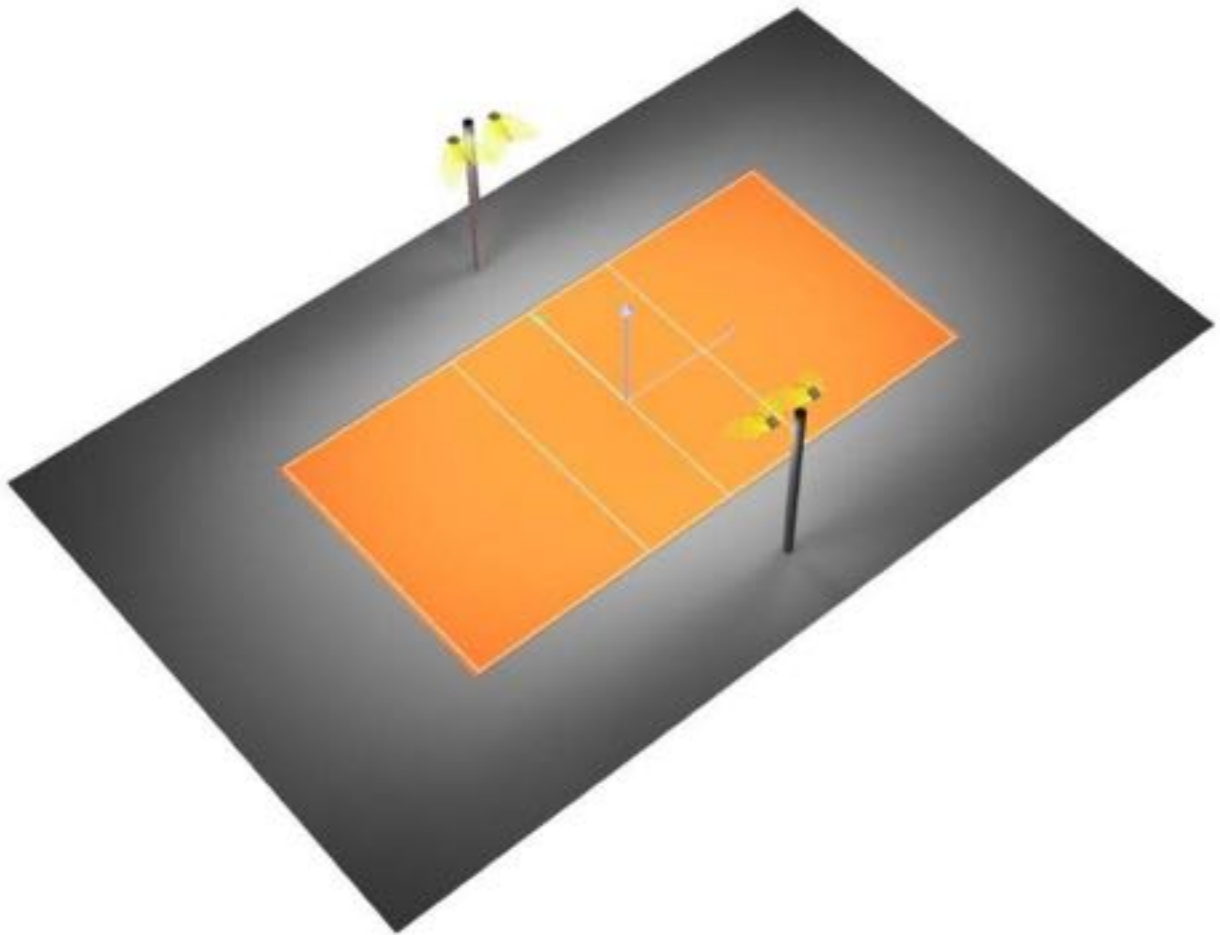


60x30 Outdoor Volleyball Court

2 20' Poles and 4 APTA 240 T4SB
Average 30 Footcandles - 1.94 Max/Min



This photometric report will be generated using methods recommended by the Illuminating Engineering Society of North America (IESNA). The calculations in this report will be based on data provided by a third party. The accuracy of this photometric report is dependent on the accuracy of the data provided. End user environment and application including, but not limited to voltage variation and dirt accumulation can cause actual photometric performance to differ from the performance calculated using the data provided. This report will be provided without warranty as to accuracy, completeness, reliability, or otherwise. In no event will Access Fixtures be responsible for any loss resulting from any use of this report.



Table of Contents

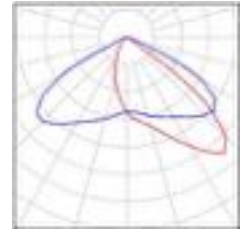
| | |
|---|----|
| 60x30 Outdoor Volleyball Court | |
| Project Cover | 1 |
| Table of contents | 2 |
| Luminaire parts list | 3 |
| AF88XAAD240-T4SB-40K-3535F | |
| Luminaire Data Sheet | 4 |
| Exterior Scene 1 | |
| Planning data | 5 |
| Luminaires (layout plan) | 6 |
| Luminaires (coordinates list) | 7 |
| 3D Rendering | 8 |
| False Colour Rendering | 9 |
| Exterior Surfaces | |
| Volleyball 1 Calculation Grid (PA) | |
| Value Chart (E, Perpendicular) | 10 |



60x30 Outdoor Volleyball Court / Luminaire Parts List

4 Pieces AF88XAAD240-T4SB-40K-3535F
Article No.:
Luminous flux (Luminaire): 26673 lm
Luminous flux (Lamps): 26636 lm
Luminaire Wattage: 237.8 W
Luminaire classification according to CIE: 100
CIE flux code: 47 94 100 100 100
Fitting: 1 x NICHIA 3535F 4000K (Correction
Factor 1.000).

See our luminaire
catalog for an image of
the luminaire.

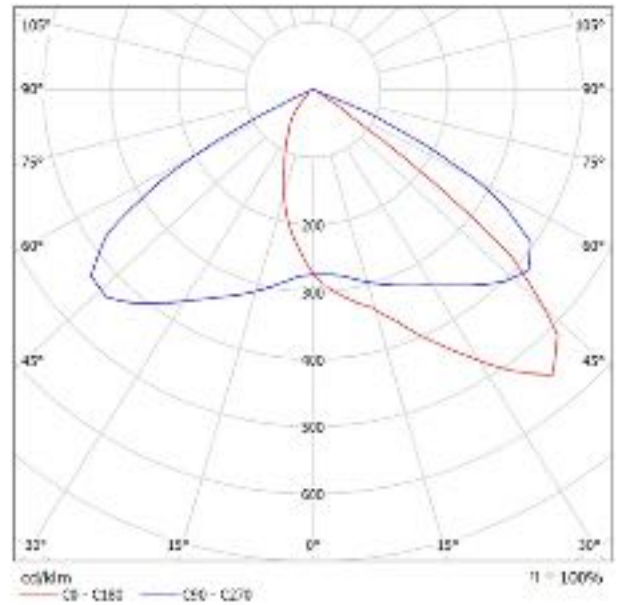




AF88XAAD240-T4SB-40K-3535F / Luminaire Data Sheet

Luminous emittance 1:

See our luminaire catalog for an image of the luminaire.

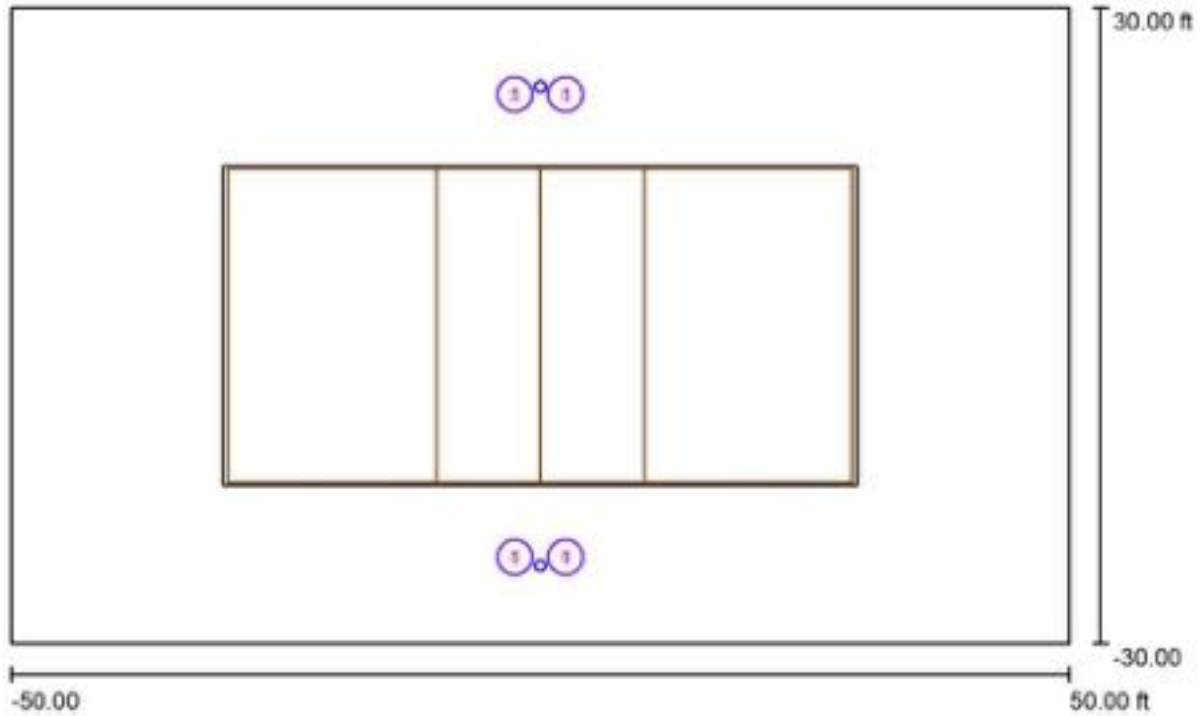


Luminaire classification according to CIE: 100
CIE flux code: 47 94 100 100 100

Due to missing symmetry properties, no UGR table can be displayed for this luminaire.



Exterior Scene 1 / Planning data



Maintenance factor: 0.90, ULR (Upward Light Ratio): 0.0%

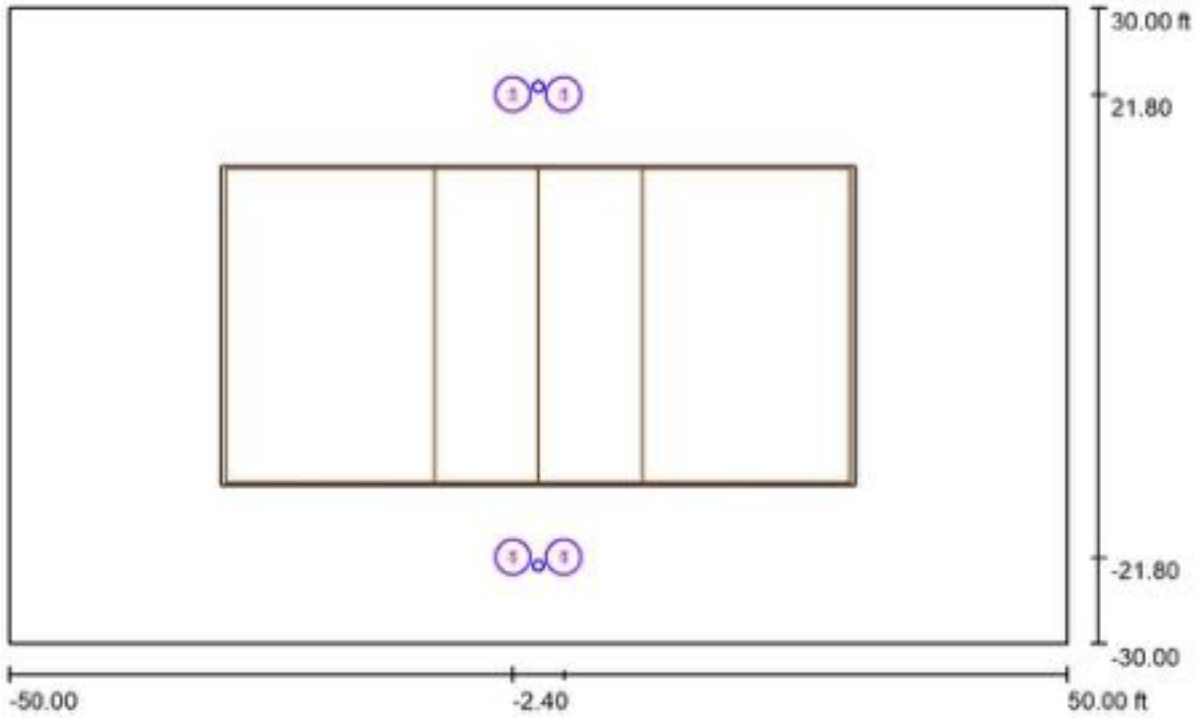
Scale 1:218

Luminaire Parts List

| No. | Pieces | Designation (Correction Factor) | Φ (Luminaire) [lm] | Φ (Lamps) [lm] | P [W] |
|-----|--------|------------------------------------|--------------------|----------------|-------|
| 1 | 4 | AF88XAAD240-T4SB-40K-3535F (1.000) | 26673 | 26636 | 237.8 |
| | | | Total: 106690 | Total: 106545 | 951.2 |



Exterior Scene 1 / Luminaires (layout plan)



Scale 1 : 218

Luminaire Parts List

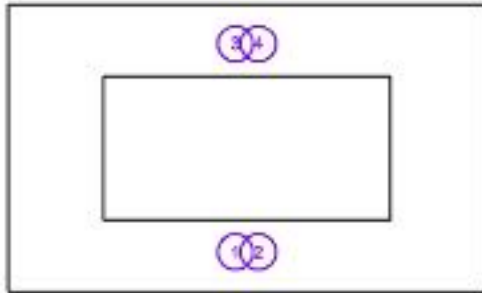
| No. | Pieces | Designation |
|-----|--------|----------------------------|
| 1 | 4 | AF88XAAD240 T4SB-40K-3535F |



Exterior Scene 1 / Luminaires (Coordinates List)

AF88XAAD240-T4SB-40K-3535F

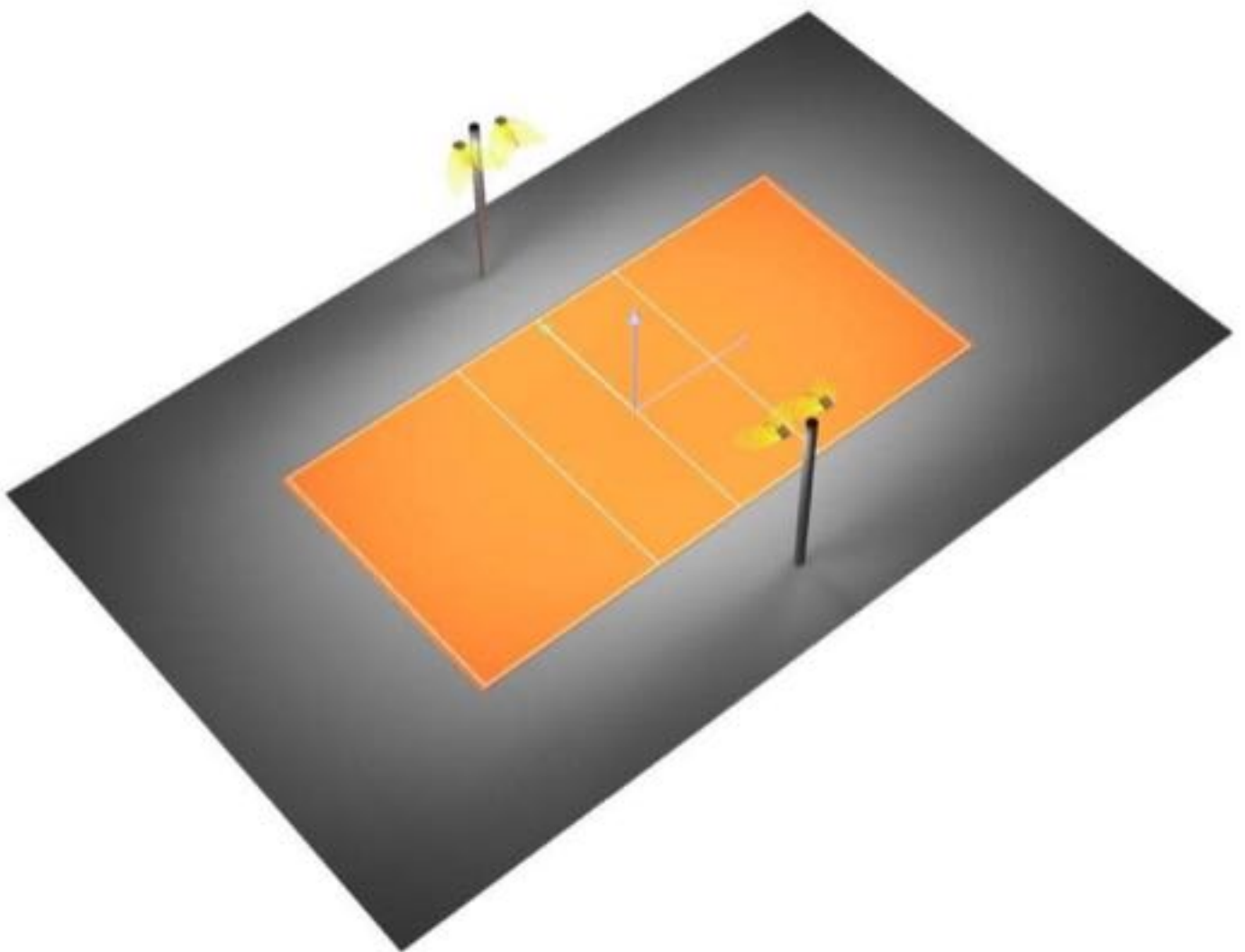
26673 lm, 237.8 W, 1 x 1 x NICHIA 3535F 4000K (Correction Factor 1.000).



| No. | Position [ft] | | | Rotation [°] | | |
|-----|---------------|---------|--------|--------------|-------|-------|
| | X | Y | Z | X | Y | Z |
| 1 | -2.400 | -21.800 | 20.000 | 0.0 | -20.0 | 90.0 |
| 2 | 2.400 | -21.800 | 20.000 | 0.0 | -20.0 | 90.0 |
| 3 | -2.400 | 21.800 | 20.000 | 0.0 | -20.0 | -90.0 |
| 4 | 2.400 | 21.800 | 20.000 | 0.0 | -20.0 | -90.0 |

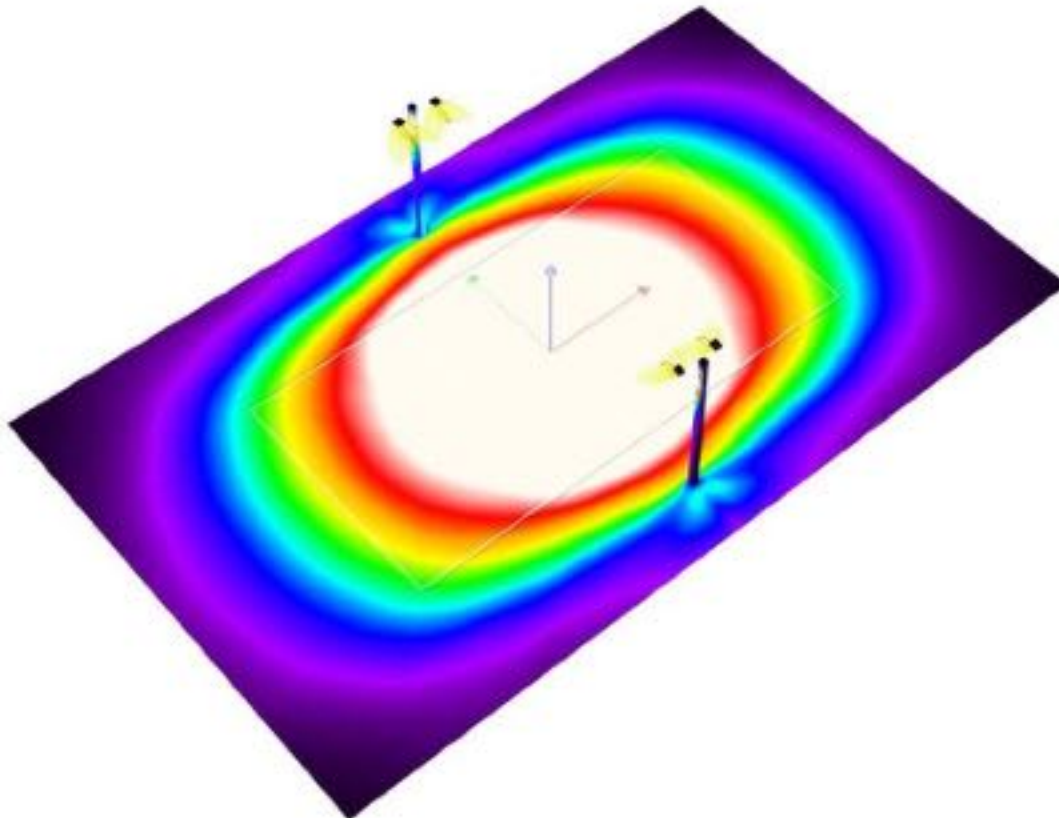


Exterior Scene 1 / 3D Rendering





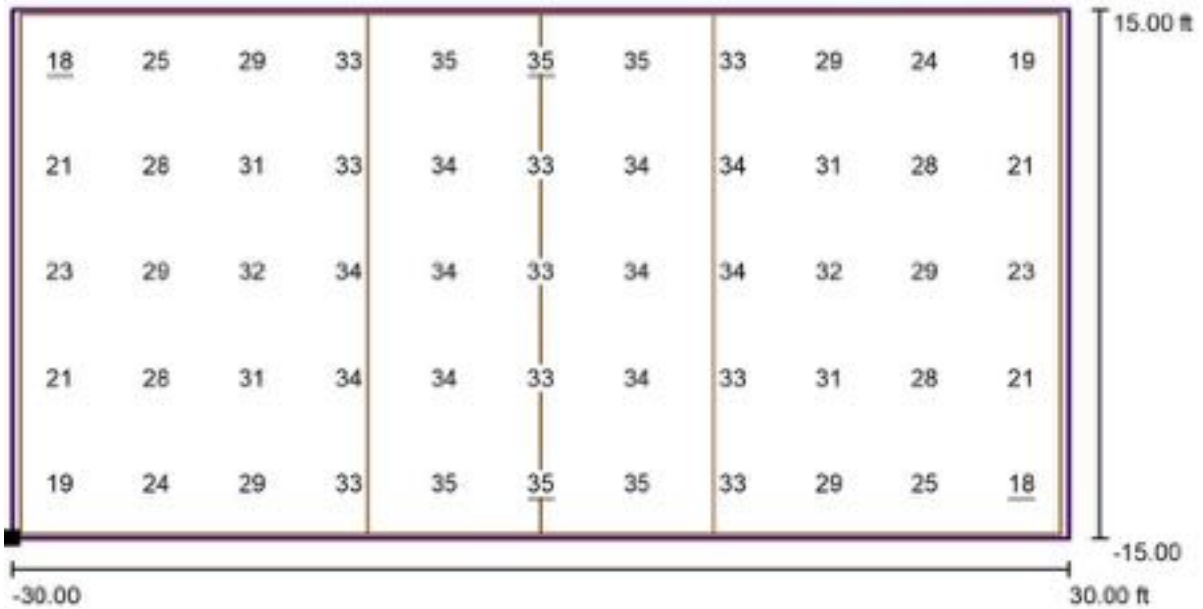
Exterior Scene 1 / False Color Rendering



fc

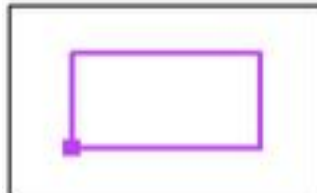


Exterior Scene 1 / Volleyball 1 Calculation Grid (PA) / Value Chart (E, Perpendicular)



Values in Footcandles, Scale 1 : 131

Position of surface in external scene:
Marked point: (-30.000 ft, -15.000 ft, 0.000 ft)



Grid: 11 x 5 Points

| | | | | |
|---------------|----------------|----------------|------|---------------------|
| E_{av} [fc] | E_{min} [fc] | E_{max} [fc] | u0 | E_{max} / E_{min} |
| 30 | 18 | 35 | 1.67 | 1.94 |