

APZA 590nm Amber LED Post Top Lights

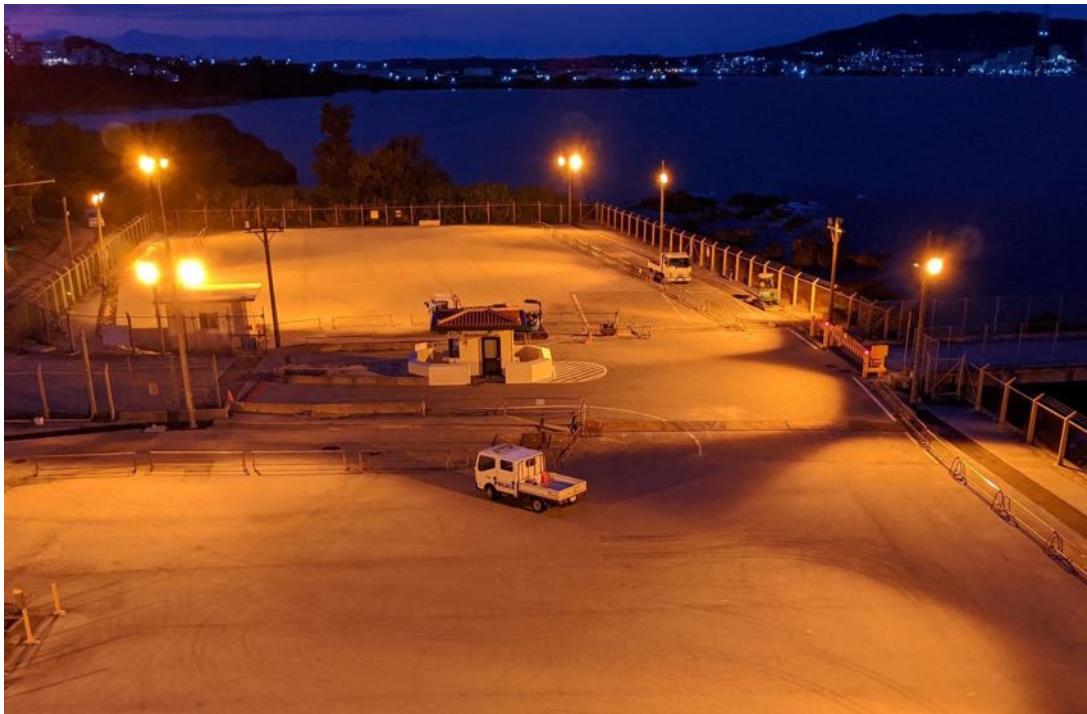


Sea turtle and wildlife friendly APZA 590nm Amber LED Post Top lights are the most versatile and durable post top area lights available.

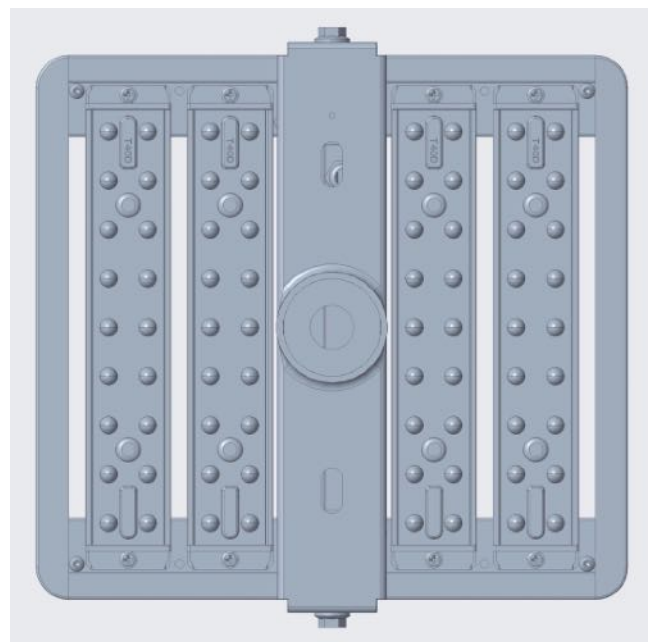
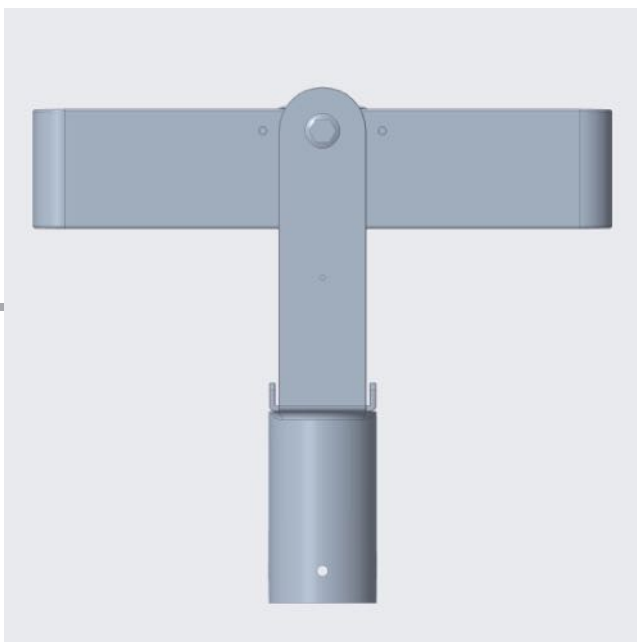
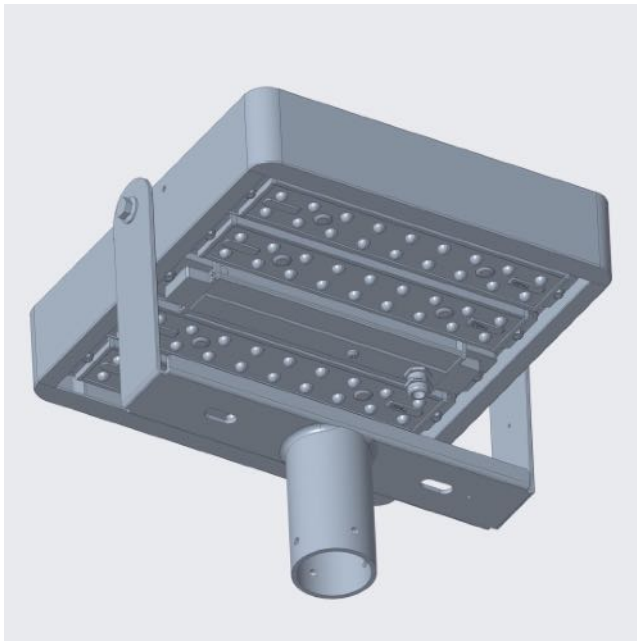
Ultimate Optics: Leading edge optics distribute the light where it is wanted and not where it is not wanted

Open Architecture: Open architecture quickly reduces heat buildup so the APZA has cooled down by the time the lights go on

Maximum Durability: Die-cast aluminum frame and NO glass protects the LEDs from blowing debris and vandalism for maximum durability



APZA 590 Nanometer LED Post Top Lights



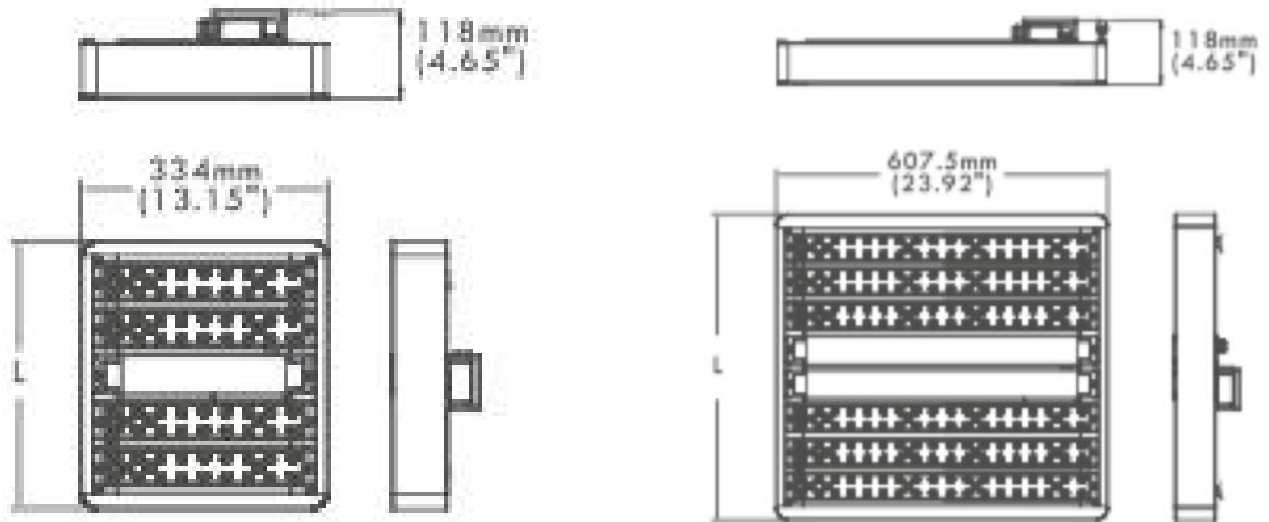
Product Introduction

APZA 590nm Amber LED post top area lights are designed to provide powerful & reliable post top area lighting for applications from pool decks, walkways, parks, and boardwalks to parking lots. With a superior patented, high-efficiency spill light control system, full cutoff design, advanced optics, low weight, and a low effective projected area (EPA), APZAs are designed to provide uniform and superior quality anti-glare illumination in just about any environment.

APZA is virtually hurricane proof and vandal resistant. APZA's fixture housing is constructed of die-cast high-grade aluminum which provides impact protection to all sides of the fixture. Even better, there will never be water penetration through broken glass because there isn't any glass to break. Should a light module be shot with a bullet, the other light modules will remain on, and APZA is field repairable.

APZA features open architecture which matters in hot climates. Open architecture enables the light modules to quickly dissipate heat from the sun that builds up in the daytime. Unlike closed in fixtures, by the time the LEDs turn on, APZA has cooled down extending the life of the LEDs.

Dimensions



Performance Summary

Input Voltage	100-277VAC or 277-480VAC, 50/60Hz
Nominal Power	40W~960W
Efficiency	85 LPW
CRI	N/A
Power Factor	>0.9 at full load
Total Harmonic Distortion	<20% at full load
Surge Protection Device	I _{max} 10KA
Optic(IESNA)	Type I, Type III, Type V
Operating Temperature	-40°C~+50°C
Accessories & Options	1-10V Dimming, PWM, DALI, DMX, Motion Sensor, Emergency Power Supply, Photocell MINI, Back Light Shield
Color Options	Black, Gray, White, Bronze
L70/L90	>66,500H
Limited Warranty	5 year limited warranty - Optional 10 year limited warranty



Not all products are qualified on the DLC QPL. To view our DLC qualified products, please consult the DLC Qualified Products List at www.designlights.org

Ordering Information

Example: AF88XBAC80L-D-T5M-590nm-BK-DIM

MODEL	INPUT VOLTAGE	MOUNTING	OPTIC	CCT	COLOR	OPTIONS
BAC40	L 100-277VAC	S	T1S	590nm	BK	DIM 1-10V Dimming
BAC80			T3S		GY	PWM 10V PWM Control
BAC120	H 277-480VAC		T3M		WH	
BAC160			T4S		BZ	DALI DALI Control
BAC200			T4VS			
BAC240			T4M			
BAC320			T5M			DMX DMX Control
BAD60			T5W			MMS Motion Sensor
BAD120			T10D			EPS Emergency Power Supply
BAD180			T20D			
BAD240			T40D			PCM Photocell MINI
BAD300			T60D			
BAD360			T90D			BLS Back Light Shield
BAD480						
BBD720						
BBD960						

With the exception of the DIM, all options require prior confirmation with the engineer.

Specification Features

Construction Extruded aluminum driver enclosure thermally isolated from Light Squares for optimal thermal performance. Heavy-wall, die cast aluminum end caps enclose housing and extruded aluminum heat sinks. A unique, patent pending interlocking housing and heat sink provides scalability with superior structural rigidity. 3G vibration tested and rated. Optional tool-less hardware available for ease of entry into electrical chamber. IP66 water-proof and dust-proof rated.

Optics Patented, high-efficiency spill light control technology. With a wide-range of optic lenses and flux options for the luminaire, it can send light exactly in the right direction and illuminate only the area of interest as efficient as possible. This will let you avoid any light waste and shine light only where is needed. With multiple spill light control options, it diminishes the light that shines towards the sky and windows of houses around the field of play to protect night preservation and biodiversity and minimize light nuisance issues.

Electrical LED drivers can be mounted to removable tray assembly, which is separated drivers pack, for ease of maintenance. 100-277VAC 50/60Hz, 277-480VAC 50/60Hz Operation. APZA is suitable for operation in -40 °C to 50 °C ambient environment. Available in standard 700mA and 1050mA driver current.

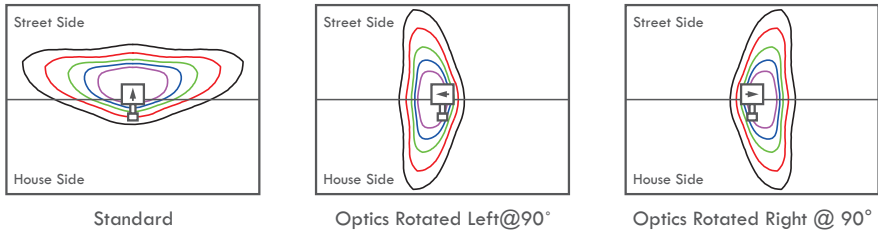
Mounting APZA can be mounted on a 2 3/8" or 2 7/8" vertical tenon.

Finish Housing finished in super durable powder coat paint, corrosion resistant polyester powder painted 100µm thickness. Meets 1000-hour salt spray certification per ASTM Standard B117. Standard housing colors of Black and Gray. other housing colors can be customized.

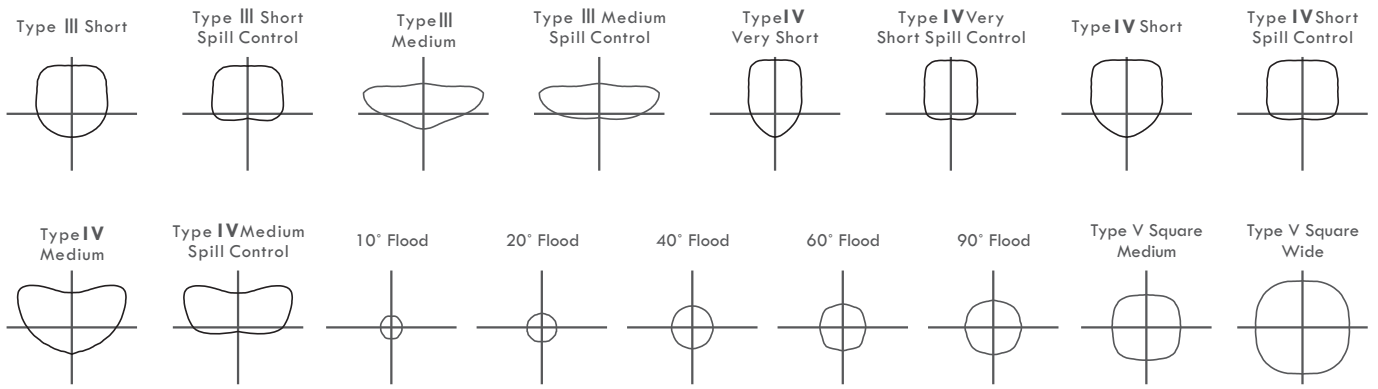
Certification

- cULus Listed
- CE-LVD/CE-EMC/CB
- DLC Premium qualified versions available
- IP66 /IK10
- RoHS compliant
- Endurance tested to withstand 1,000 hours of elevated ambient salt fog conditions as defined in ASTM Standard B117
- 10KA surge suppression protection tested in accordance with IEEE/ANSI C62.41.2
- Certified to ANSI C136.31-2010, 3G bridge and overpass vibration standards

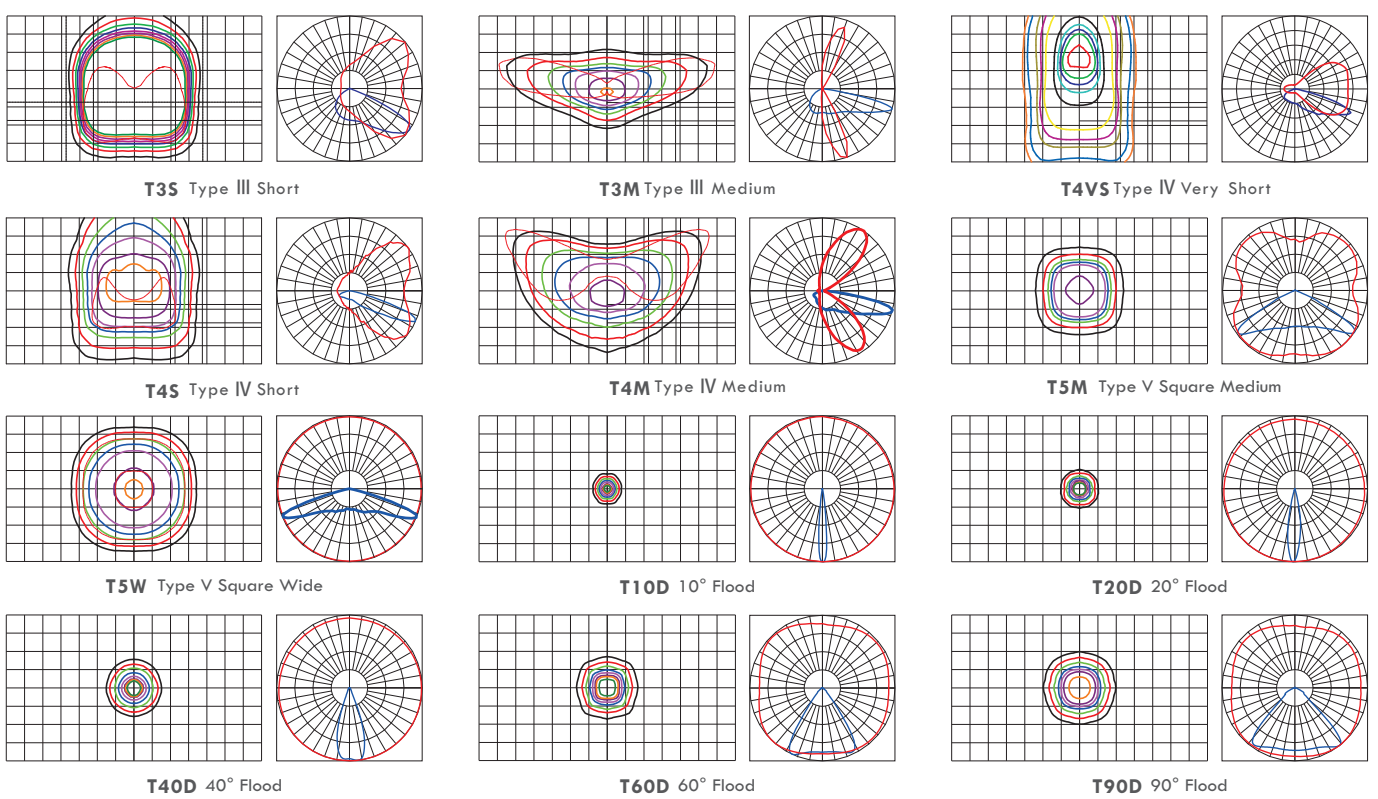
Optic Orientation



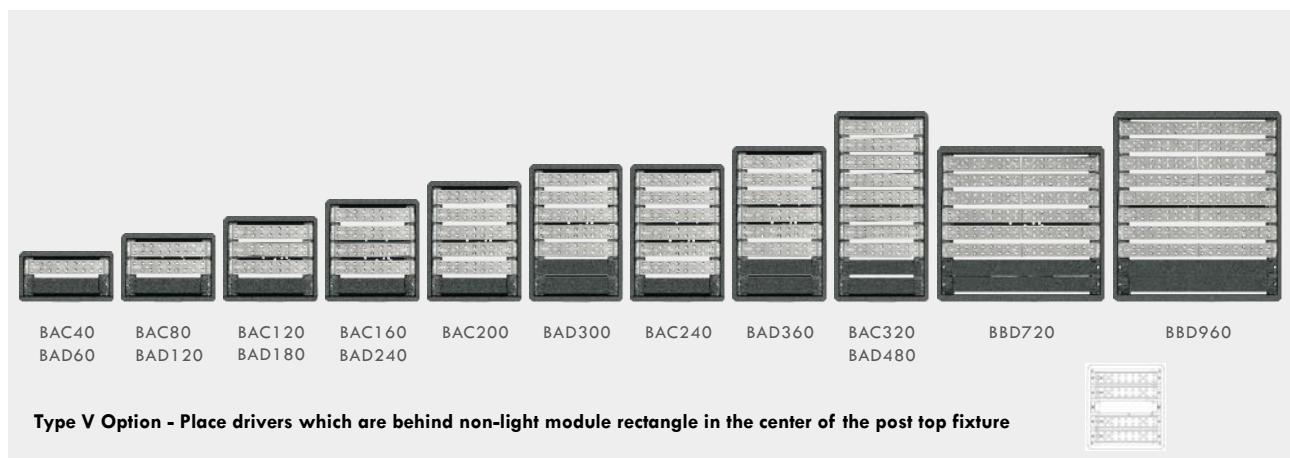
Optical Distributions



Photometry



Product Image



Brief Specifications

Model	Nominal power	LED current	Module number	Module power	Product size L*W*H (mm/in)	Packing size L*W*H (mm/in)	Net weight	Gross weight	Typical luminous flux(lm)	Typical efficiency (lm/W)
100-277VAC										
BAC40L	40W	700mA	1	40W	175(6.89)*334(13.15)*132(5.20)	410(16.14)*425(16.73)*160(6.30)	4.4KG	5.4KG	3400	85
BAC80L	80W	700mA	2	40W	238(9.37)*334(13.15)*132(5.20)	410(16.14)*425(16.73)*160(6.30)	5.7KG	6.8KG	6800	85
BAC120L	120W	700mA	3	40W	301(11.83)*334(13.15)*132(5.20)	475(18.70)*425(16.73)*160(6.30)	5.8KG	6.9KG	10200	85
BAC160L	160W	700mA	4	40W	363(14.29)*334(13.15)*132(5.20)	535(21.06)*425(16.73)*160(6.30)	7.2KG	8.4KG	13600	85
BAC200L	200W	700mA	5	40W	426(16.75)*334(13.15)*132(5.20)	600(23.62)*425(16.73)*160(6.30)	7.3KG	8.5KG	17000	85
BAC240L	240W	700mA	6	40W	488(19.21)*334(13.15)*132(5.20)	660(25.98)*425(16.73)*160(6.30)	8.8KG	10.1KG	20400	85
BAC320L	320W	700mA	8	40W	675(26.57)*334(13.15)*132(5.20)	845(33.27)*425(16.73)*160(6.30)	10.5KG	12.0KG	27200	85
BAD60L	60W	1050mA	1	60W	176(6.91)*334(13.15)*132(5.20)	410(16.14)*425(16.73)*160(6.30)	4.4KG	5.4KG	5100	85
BAD120L	120W	1050mA	2	60W	238(9.371)*334(13.15)*132(5.20)	410(16.14)*425(16.73)*160(6.30)	5.8KG	6.9KG	10200	85
BAD180L	180W	1050mA	3	60W	301(11.83)*334(13.15)*132(5.20)	475(18.70)*425(16.73)*160(6.30)	6.3KG	7.4KG	15300	85
BAD240L	240W	1050mA	4	60W	363(14.29)*334(13.15)*132(5.20)	535(21.06)*425(16.73)*160(6.30)	7.4KG	8.6KG	20400	85
BAD300L	300W	1050mA	5	60W	488(19.21)*334(13.15)*132(5.20)	600(23.62)*425(16.73)*160(6.30)	7.8KG	9.0KG	25500	85
BAD360L	360W	1050mA	6	60W	550(21.65)*334(13.15)*132(5.20)	725(28.54)*425(16.73)*160(6.30)	9.3KG	10.6KG	30600	85
BAD480L	480W	1050mA	8	60W	675(26.57)*334(13.15)*132(5.20)	845(33.27)*425(16.73)*160(6.30)	10.5KG	12.0KG	40800	85
BBD720L	720W	1050mA	6	120W	561(22.07)*608(23.94)*132(5.20)	730(28.74)*700(27.56)*160(6.30)	18.2KG	20.2KG	61200	85
BBD960L	960W	1050mA	8	120W	686(26.99)*608(23.94)*132(5.20)	855(33.66)*700(27.56)*160(6.30)	22.6KG	24.8KG	81600	85
277-480VAC										
BAC80H	80W	700mA	2	40W	238(9.37)*334(13.15)*132(5.20)	410(16.14)*425(16.73)*160(6.30)	5.7KG	6.8KG	6800	85
BAC120H	120W	700mA	3	40W	301(11.83)*334(13.15)*132(5.20)	475(18.70)*425(16.73)*160(6.30)	5.8KG	6.9KG	10200	85
BAC160H	160W	700mA	4	40W	363(14.29)*334(13.15)*132(5.20)	535(21.06)*425(16.73)*160(6.30)	7.2KG	8.4KG	13600	85
BAC200H	200W	700mA	5	40W	426(16.75)*334(13.15)*132(5.20)	600(23.62)*425(16.73)*160(6.30)	7.3KG	8.5KG	17000	85
BAC240H	240W	700mA	6	40W	488(19.21)*334(13.15)*132(5.20)	660(25.98)*425(16.73)*160(6.30)	8.8KG	10.1KG	20400	85
BAC320H	320W	700mA	8	60W	675(26.57)*334(13.15)*132(5.20)	845(33.27)*425(16.73)*160(6.30)	10.5KG	12.0KG	27200	85
BAD120H	120W	1050mA	2	60W	238(9.371)*334(13.15)*132(5.20)	410(16.14)*425(16.73)*160(6.30)	5.8KG	6.9KG	10200	85
BAD180H	180W	1050mA	3	60W	301(11.83)*334(13.15)*132(5.20)	475(18.70)*425(16.73)*160(6.30)	6.3KG	7.4KG	15300	85
BAD240H	240W	1050mA	4	60W	363(14.29)*334(13.15)*132(5.20)	535(21.06)*425(16.73)*160(6.30)	7.4KG	8.6KG	20400	85
BAD300H	300W	1050mA	5	60W	488(19.21)*334(13.15)*132(5.20)	600(23.62)*425(16.73)*160(6.30)	7.8KG	9.0KG	25500	85
BAD360H	360W	1050mA	6	60W	550(21.65)*334(13.15)*132(5.20)	725(28.54)*425(16.73)*160(6.30)	9.3KG	10.6KG	30600	85
BAD480H	480W	1050mA	8	60W	675(26.57)*334(13.15)*132(5.20)	845(33.27)*425(16.73)*160(6.30)	10.5KG	12.0KG	40800	85
BBD720H	720W	1050mA	6	120W	561(22.07)*608(23.94)*132(5.20)	730(28.74)*700(27.56)*160(6.30)	18.2KG	20.2KG	61200	85
BBD960H	960W	1050mA	8	120W	686(26.99)*608(23.94)*132(5.20)	855(33.66)*700(27.56)*160(6.30)	22.6KG	24.8KG	81600	85

CERTIFICATION & STANDARDS

Certification	Standards	Remark
CE-LVD Low Voltage Directive (2014/35/EC)	EN 60598-2-3/A1:2011	Applicable for Street Light
	EN 60598-2-5:2015	Applicable for Flood Light
	EN 60598-1:2015/A11:2018	
	EN 62471:2008	
	EN 62493:2015	
CE-EMC Electromagnetic Compatibility Directive (2014/30/EU)	EN 55015:2013/A1:2015	
	EN 61547:2009	
	EN 61000-3-2:2014	
	EN 61000-3-3:2013	
CE-ErP Energy-Related Products Directive (2009/125/EU)	EU 1194/2012:2012-12-12	
	EC 244/2009:2009-03-18	
	EU 859/2009:2009-09-18	
CE-RoHS Directive (2011/65/EU)	EN 62321:2009	
CB	IEC 60598-2-3/A1:2011	Applicable for Street Light
	IEC 60598-2-5:2015	Applicable for Flood Light
	IEC 60598-1:2014	
	IEC 62471:2006	
	IEC 62471-2:2009	
ENEC	EN 60598-2-3/A1:2011	Applicable for Street Light
	EN 60598-2-5:2015	Applicable for Flood Light
	EN 60598-1: 2015/A1: 2018	
	EN 62471:2008	
SAA	EN 62493:2010	
	AS/NZS 60598.2.3:2015	
ATEX ATEX 95 Equipment Directive(94/9/EC)	AS/NZS 60598.1:2017	
	EN 60079-0:12	
	EN 60079-11:12	
UL	EN 60529:1989+A1:1999	
	UL1598	
	UL8750	
	CSA C22.2 No. 250.0-08	
FCC	CSA C22.2 No. 250.13-14	
	Title 47 CFR Part 15	
PSE	日本電気用品安全法省令別表第八(Safety)	
Photobiological Safety	日本電気用品安全法省令別表第十(EMC)	
	EN 62471:2008	
Vibration test	IEC 62471:2006	
	ANSI C136.31-2010	Applicable for Street Light
Salt spray test	IEC/EN 60598-2-5 clause 5.6.7	Applicable for Flood Light
	ISO 9227:2012	
IK08 Impact resistance test	ASTM B117	
	IEC 62262:2002	
IP65 or IP67 test	IEC/EN 60598-1:2015 clause 9.2.2 and clause 9.2.6 or clause 9.2.8	
	IES LM-79-2008	
Photometric and Integrating Sphere test	ANSI C82.77-2002	
	ANSI C78.377-2011	
	CIE 13.3-1995	
	CIE 15-2004	
	IES TM-15-11	
	IES LM-63-2002	
LED Module	IEC/EN 62031:2008+A1:2013	
	IES LM-80-2008	
LED Lamps	ANSI C78.377-2011	
	JESD22 A108	
	JESD22 A101C	
	JESD22 A105	
	JESD22 B104	
	JESD22 A114	
LED Driver	EN 61347-1:2008	
	EN 61347-2-13:2006	
	EN 62384:2006+A1:2009	
	EN 55015:2006+A1:2007+A2:2009	
	EN 61000-3-2:2006+A1:2009+A2:2009	
	EN 61000-3-3:2008	
	EN 61547:2009	
	IEC 62386 Part 102 and Part 207	Applicable for DALI
	UL1012 UL879 UL935	
FCC Title 47 CFR Part 15 Class A		
Surge Protection Device	ANSI/IEEE C62.41.2-2002	
	UL1449	
Receptacle	ANSI C136.10-2010	
Dimming Receptacle	ANSI C136.41-2013	