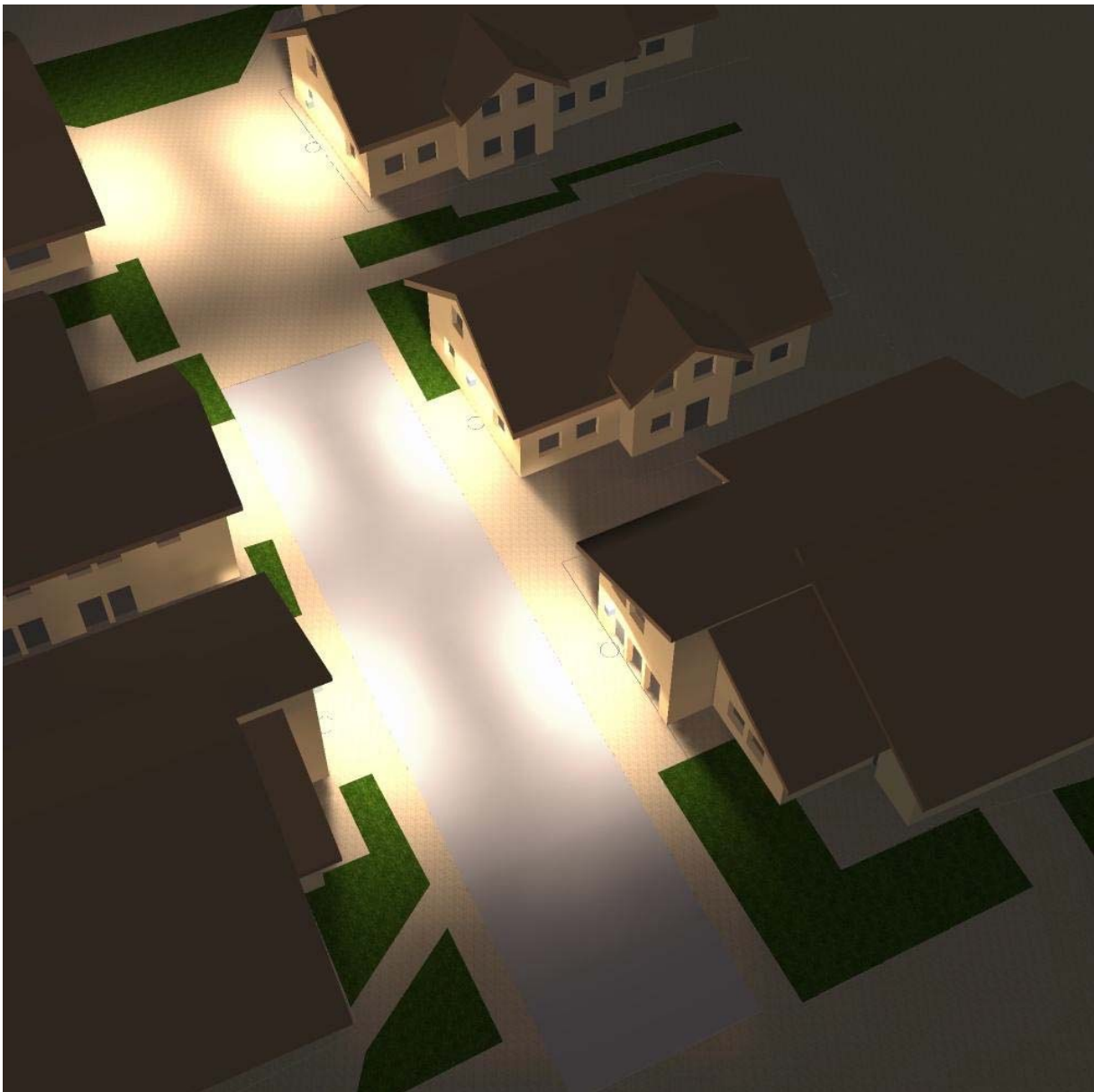


**Driveways Illuminated with APTO 30s
2200 Kelvin Full Cutoff
Dark Sky Compliant**



This photometric study was generated using methods recommended by the Illuminating Engineering Society of North America (IESNA). The calculations in this report are based on data provided by a third party. The accuracy of this report is dependent on the accuracy of the data provided. End user environment and application including but not limited to voltage variation and dirt accumulation can cause actual photometric performance to differ from the performance calculated using the data provided. This report is provided without warranty as to accuracy, completeness, reliability or otherwise. In no event will Access Fixtures be responsible for any loss resulting from use of this report.

Operator Jonathan
Telephone
Fax
e-Mail

Table of contents

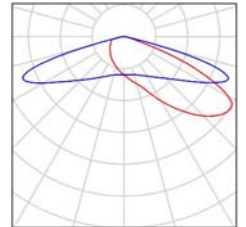
AFL-Driveway in an apartment Building Lighting ZM-2022-1249	
Project Cover	1
Table of contents	2
Luminaire parts list	3
Exterior Scene 1	
Planning data	4
Luminaires (layout plan)	5
Luminaires (coordinates list)	6
Street-valuation fields (list of coordinates)	7
3D Rendering	8
False Color Rendering	9
Exterior Surfaces	
Street-valuation field 20X65.5	
Value Chart (E)	10
Street-valuation field 20X130	
Value Chart (E)	11

Operator Jonathan
Telephone
Fax
e-Mail

AFL-Driveway in an apartment Building Lighting ZM-2022-1249 / Luminaire parts list

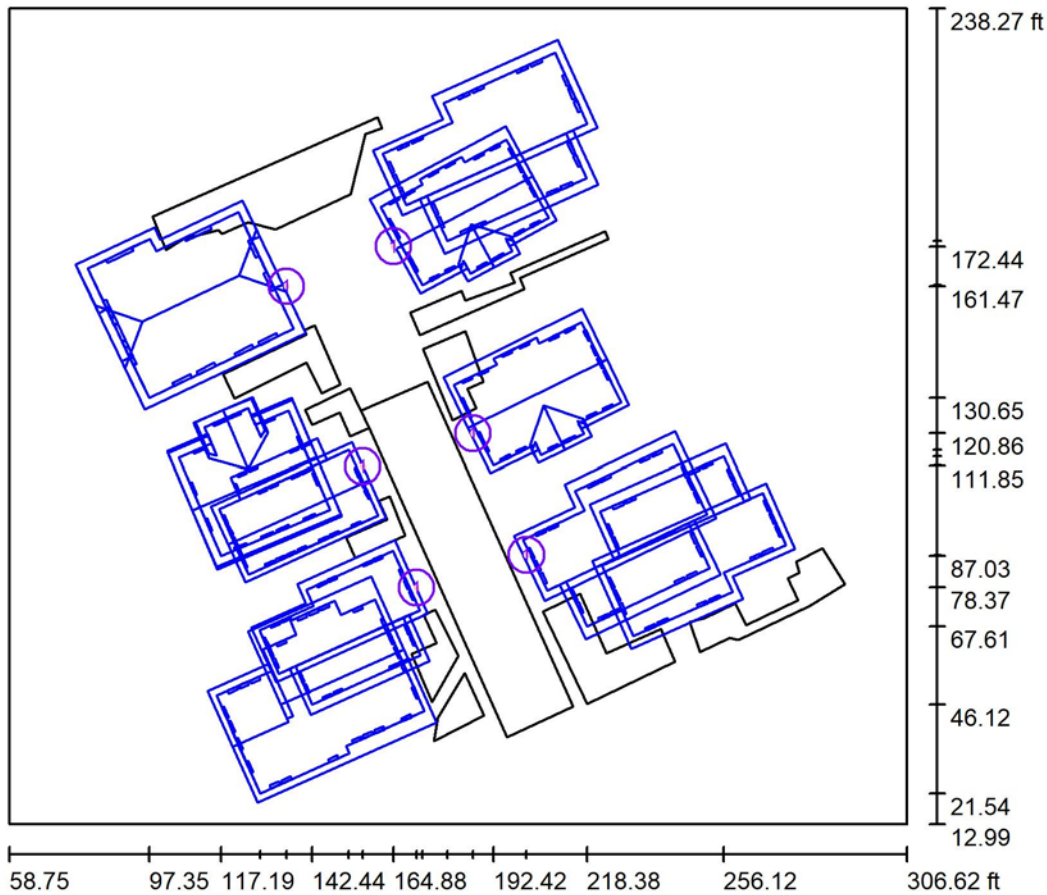
6 Pieces WLA30-T4M1-CREE XPG2 2200K Wall Pack
Article No.:
Luminous flux (Luminaire): 2244 lm
Luminous flux (Lamps): 2263 lm
Luminaire Wattage: 32.8 W
Luminaire classification according to CIE: 100
CIE flux code: 24 60 95 100 99
Fitting: 1 x CREE XPG2 2200K + 2100 Kelvin
(Correction Factor 1.000).

See our luminaire
catalog for an image of
the luminaire.



Operator Jonathan
 Telephone
 Fax
 e-Mail

Exterior Scene 1 / Planning data



Light loss factor: 0.80, ULR (Upward Light Ratio): 0.0%

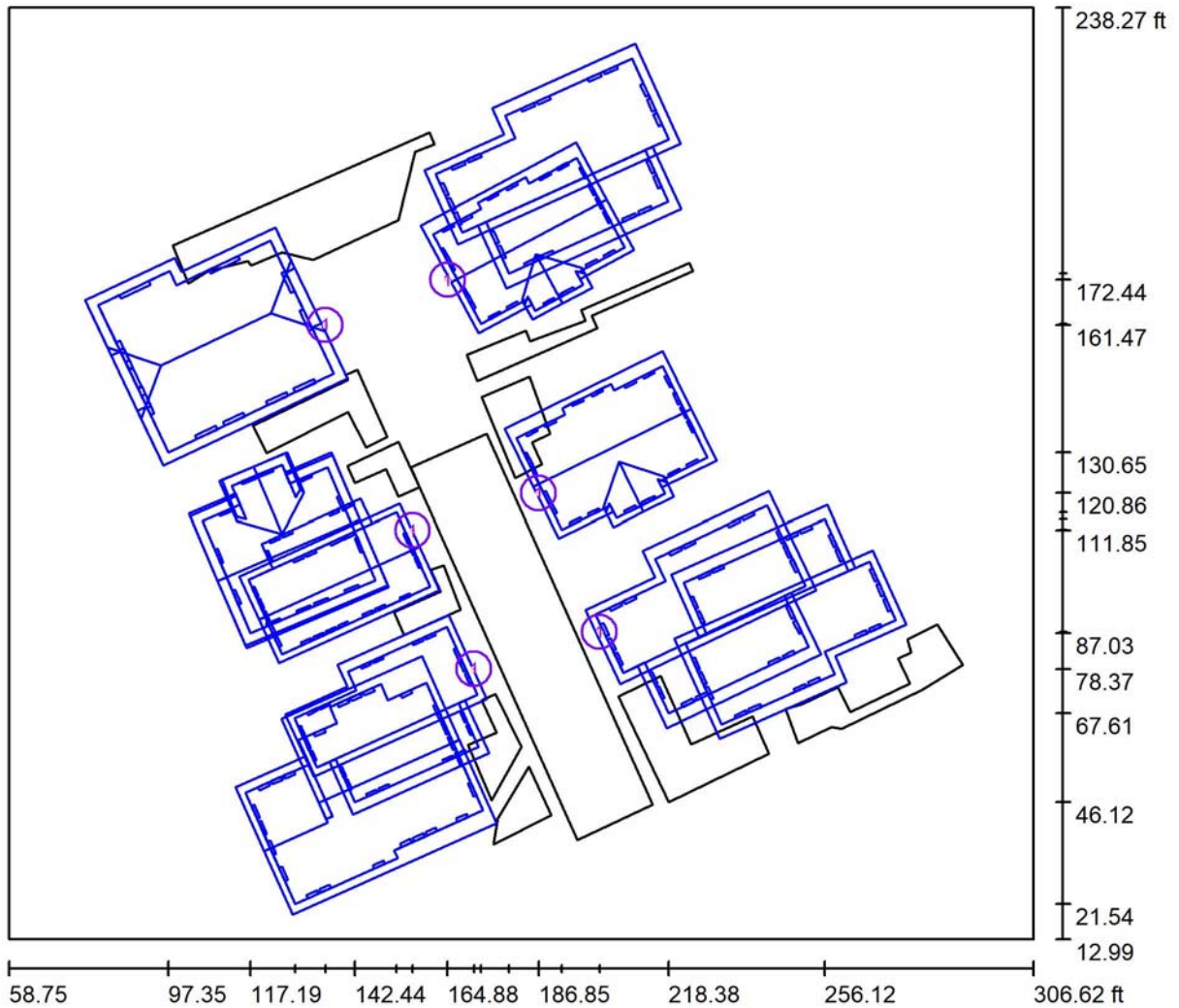
Scale 1:637

Luminaire Parts List

No.	Pieces	Designation (Correction Factor)	Φ (Luminaire) [lm]	Φ (Lamps) [lm]	P [W]
1	6	WLA30-T4M1-CREE XPG2 2200K Wall Pack (1.000)	2244	2263	32.8
Total:			13463	13579	196.8

Operator Jonathan
 Telephone
 Fax
 e-Mail

Exterior Scene 1 / Luminaires (layout plan)



Scale 1 : 541

Luminaire Parts List

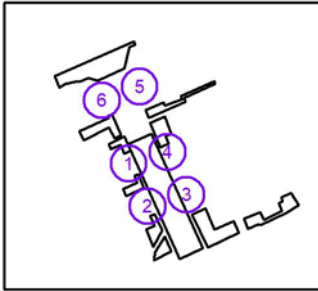
No.	Pieces	Designation
1	6	WLA30-T4M1-CREE XPG2 2200K Wall Pack

Operator Jonathan
 Telephone
 Fax
 e-Mail

Exterior Scene 1 / Luminaires (coordinates list)

WLA30-T4M1-CREE XPG2 2200K Wall Pack

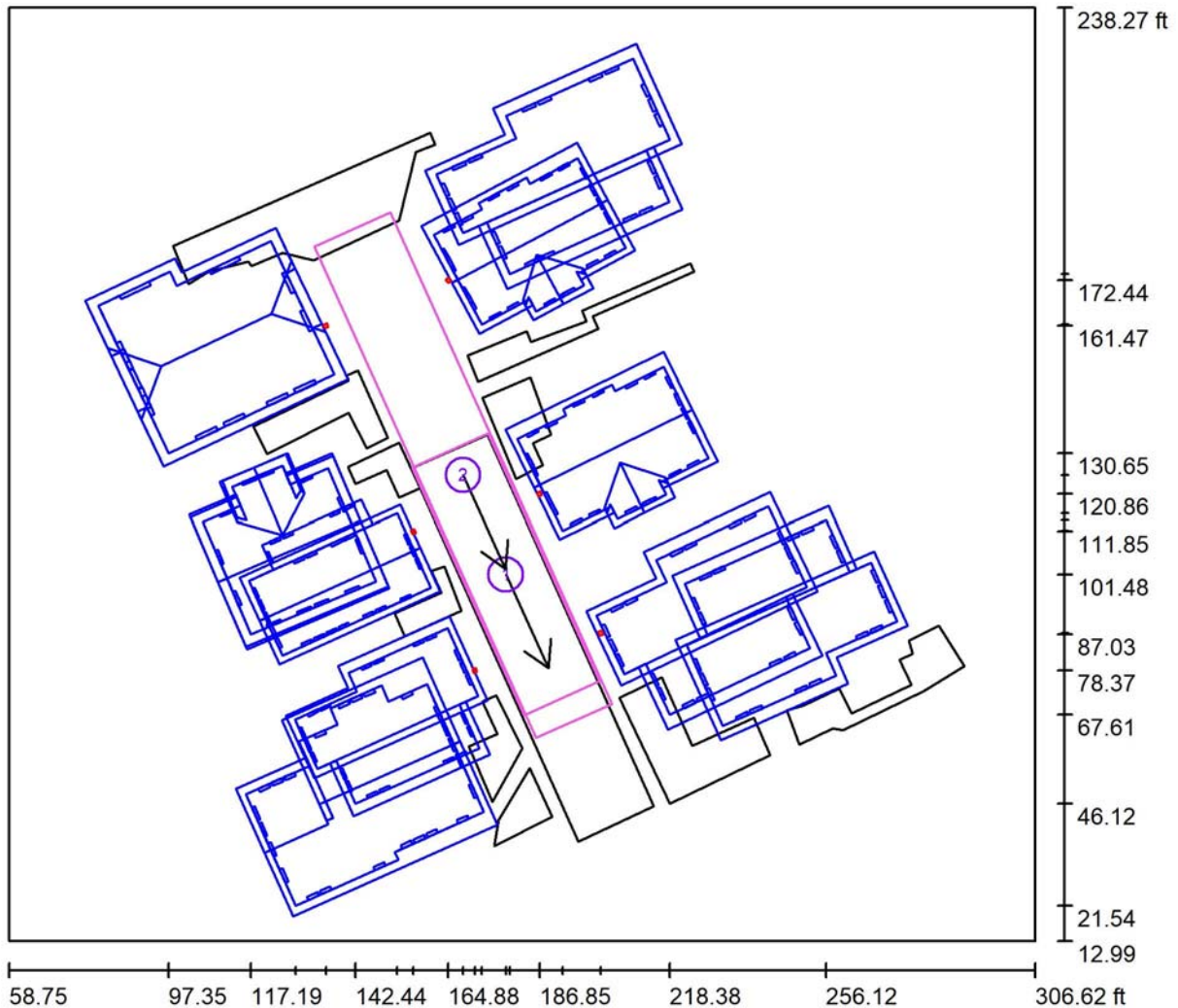
2244 lm, 32.8 W, 1 x 1 x CREE XPG2 2200K + 2100 Kelvin (Correction Factor 1.000).



No.	Position [ft]			Rotation [°]		
	X	Y	Z	X	Y	Z
1	156.435	111.845	8.000	0.0	0.0	23.8
2	171.231	78.369	8.000	0.0	0.0	23.8
3	201.615	87.376	8.000	0.0	0.0	-156.2
4	186.845	120.863	8.000	0.0	0.0	-156.2
5	164.880	172.439	8.000	0.0	0.0	-151.4
6	135.281	161.471	8.000	0.0	0.0	26.9

Operator Jonathan
 Telephone
 Fax
 e-Mail

Exterior Scene 1 / Street-valuation fields (list of coordinates)



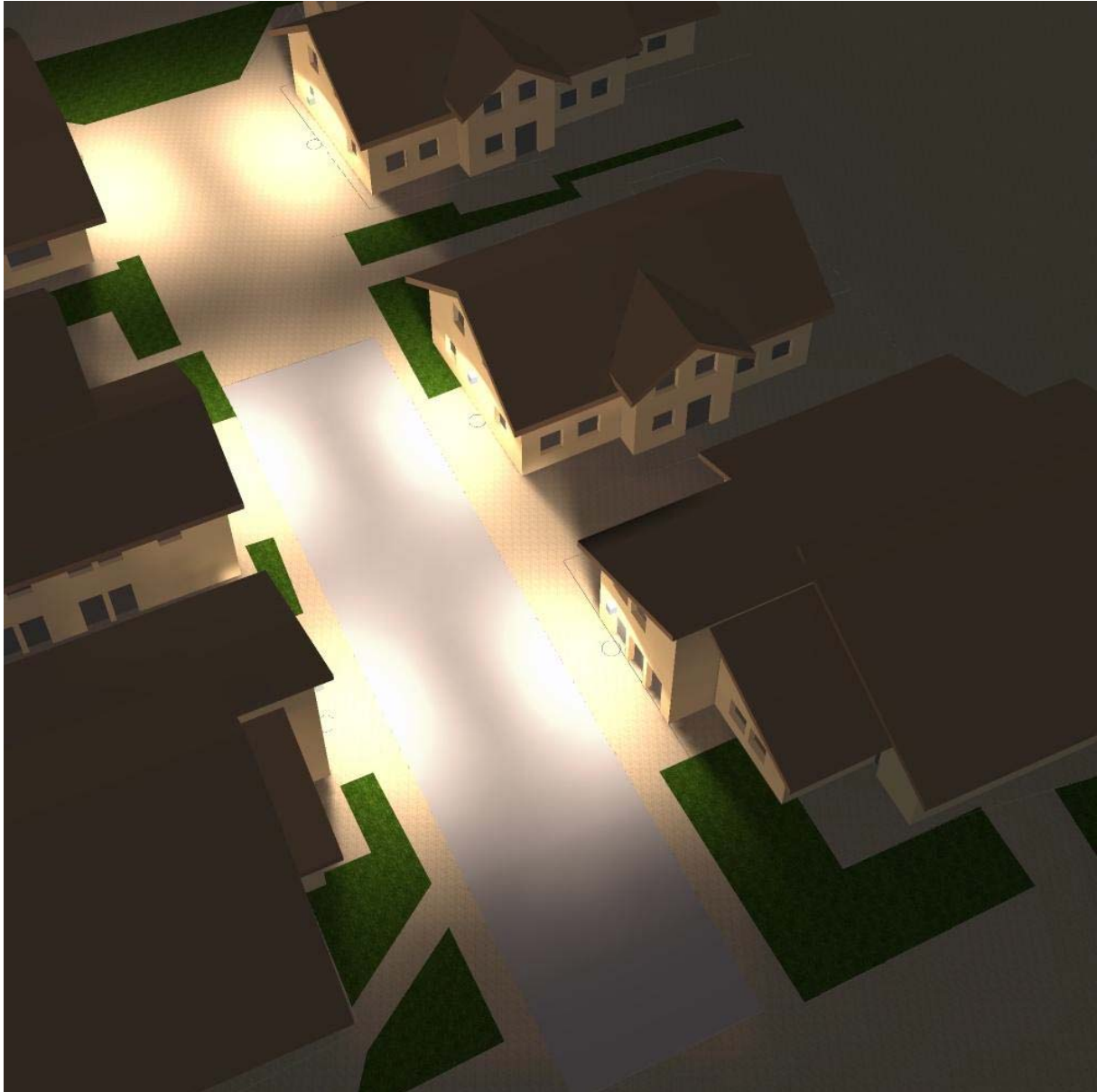
Scale 1 : 541

Pseudo-Calculation Field List

No.	Designation	Position [ft]			Size [ft]		Viewing direction [°]	Grid
		X	Y	Z	L	W		
1	Street-valuation field 20X65.5	178.751	101.479	0.000	65.500	20.000	-65.7	10 x 3
2	Street-valuation field 20X130	168.426	125.415	0.000	130.000	20.000	-65.7	10 x 3

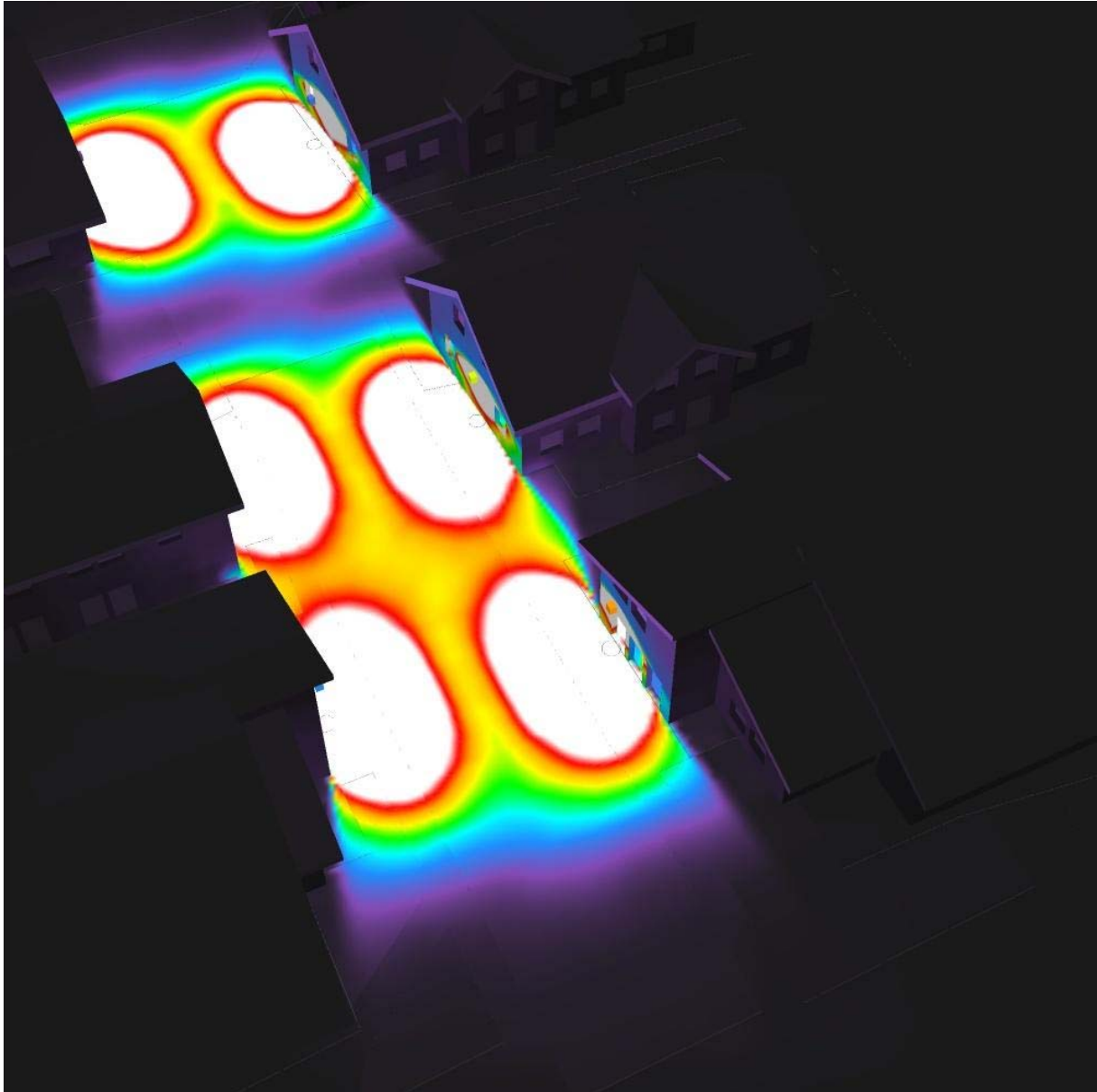
Operator Jonathan
Telephone
Fax
e-Mail

Exterior Scene 1 / 3D Rendering



Operator Jonathan
Telephone
Fax
e-Mail

Exterior Scene 1 / False Color Rendering

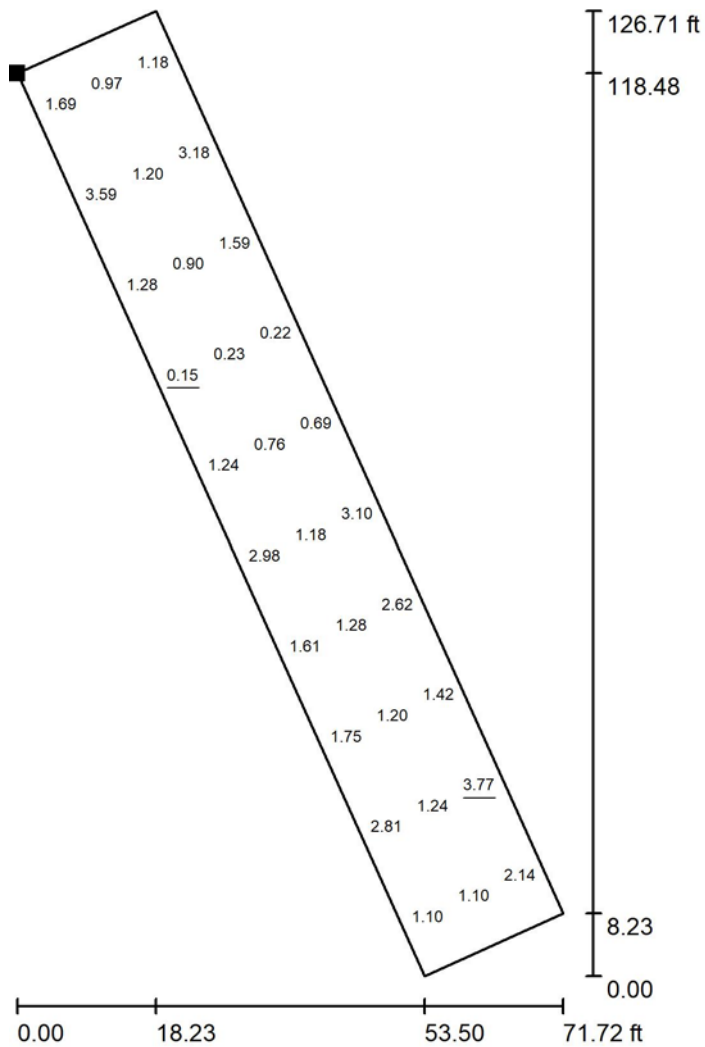


0 0.25 0.50 0.75 1.00 1.25 1.50 1.75 2.00

fc

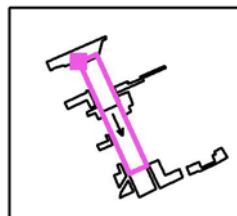
Operator Jonathan
 Telephone
 Fax
 e-Mail

Exterior Scene 1 / Street-valuation field 20X130 / Value Chart (E)



Values in Footcandles, Scale 1 : 303

Position of surface in external scene:
 Marked point:
 (132.564 ft, 180.541 ft, 0.000 ft)



Grid: 10 x 3 Points

E_{av} [fc]	E_{min} [fc]	E_{max} [fc]	u0	E_{min} / E_{max}
1.61	0.15	3.77	0.094	0.040

Rotation: -65.7°