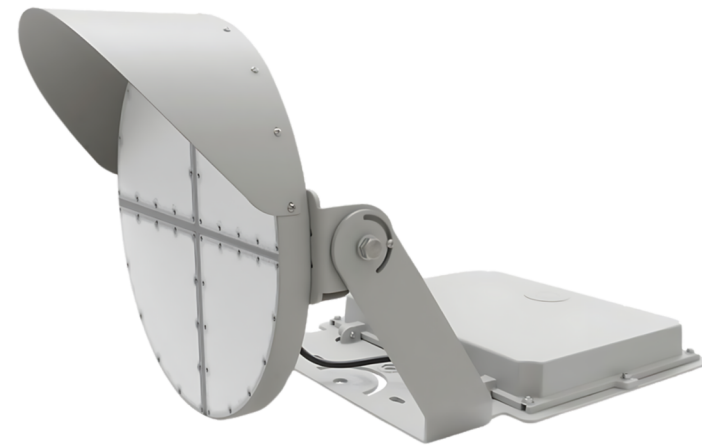


# STAD

## LED SPORTS LIGHTS



### Optics Options:

STAD has four different optical distribution options: 20, 30, 40, or 50-degree optics that match Metal Halide sports lights to distribute the light evenly and to where it is needed.

### Wattage, LPW, and Volts:

With 570 AND 850 watts per light fixture, 160 lumens per watt, and functional on any voltage between 200v and 528v, STAD provides over 90,000 lumens to replace any 1000w Metal Halide sports light.

### Lasting Durability:

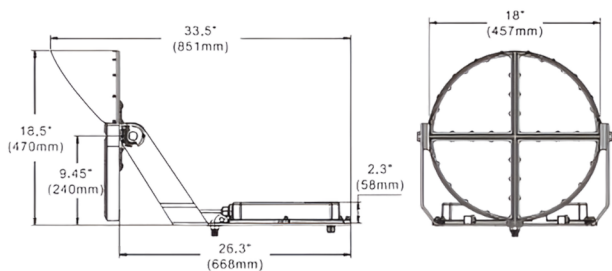
LED reliability, heavy-duty die-cast housing, and cooling fins to maximize heat dissipation make STADs the perfect no-maintenance replacement for 1000w Metal Halide sports lights.

### PRODUCT DESCRIPTION

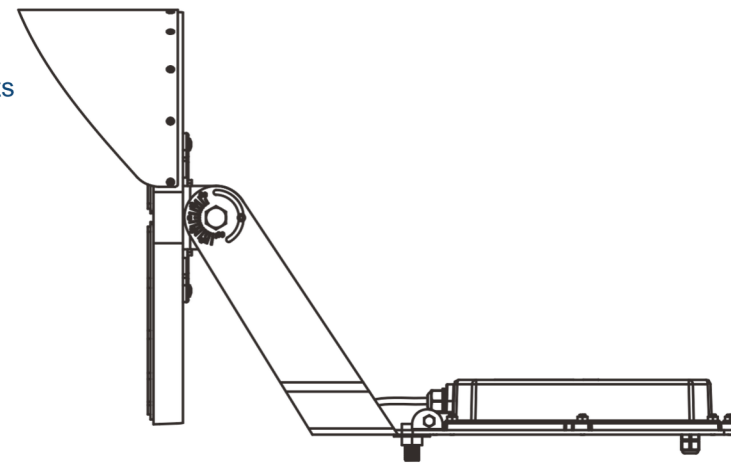
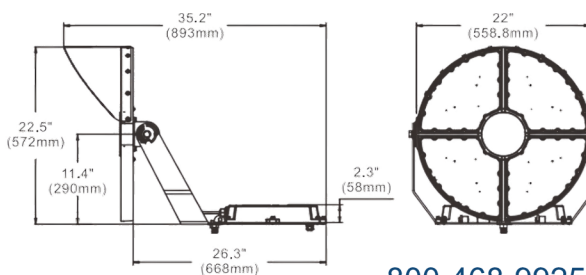
Designed to be a direct replacement for 1000w Metal Halide sports lights, STAD LED sports lights are designed and manufactured to provide powerful & reliable lighting. This state-of-the-art LED sports flood light will replace 1000w Metal Halide sports lights on a one-for-one basis. STAD utilizes four different optical distributions that match Metal Halide sports lights and comes standard with two mounting options to accommodate all mounting applications.

### DIMENSIONS:

STAD 550 18" HEAD



STAD 850 22" HEAD



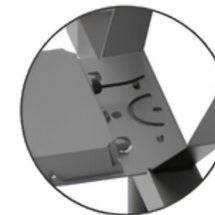
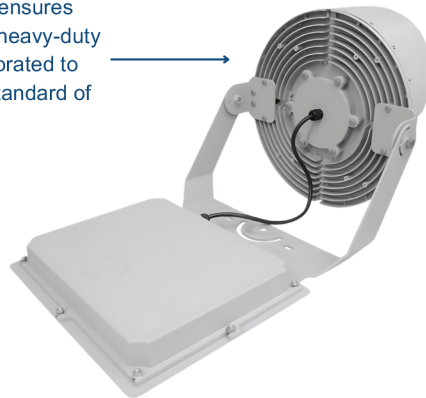


Scan me to explore more Sport Lights options!

## PRODUCT DESCRIPTION



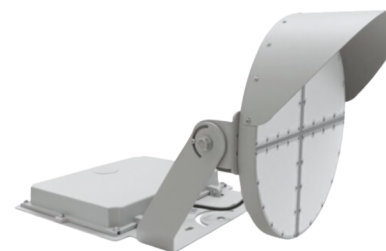
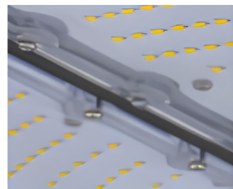
The robust one-piece die-cast construction ensures optimal heat dissipation, making it ideal for heavy-duty applications. Cooling fins have been incorporated to enhance ambient temperature, meeting a standard of up to 50°C.



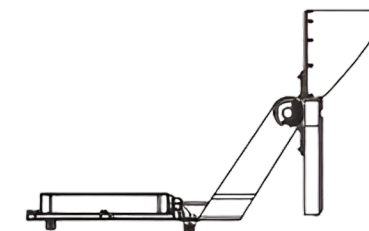
2 mounting options. U bracket and bolt mount, to accommodate all install applications.

### PROPRIETARY OPTICAL CONTROL

Tailored lenses with 20, 30, 40, and 50-degree specifications empower architects with unparalleled design flexibility, enabling the creation of layouts without limitations. Engineered for optimal light output, these optics ensure maximum illumination precision.



FORM FACTOR



LINE DRAWING

## PRODUCT FEATURES

<b>LISTINGS</b>	UL and CUI listed for wet locations, IP65 rated, DLC 5.1 Premium
<b>HOUSING</b>	Die-cast Aluminum head and Driver box with a steel frame for support coated in a gray powder coat
<b>LEDS</b>	New generation LED module
<b>FINISH</b>	UV stabilized powder coat finish
<b>LENS</b>	20°, 30°, 40°, 50° optics Standard 200-528v Driver
<b>OPTIONS</b>	Standard U Bracket and Bolt Mounting options Finish color Grey with adder

## PRODUCT SPECIFICATION

MODEL	SYSTEM WATTAGE	INPUT VOLTAGE	CRI	COLOR TEMP.	STANDARD	FINISH	STARTING TEMP.
AF55XLED-2818-550	570w	HV4=200-528v	Ra70+	5000K	20ft Cord	Grey	-40° C
AF55XLED-2822-850	850w	HV4=200-528v	Ra70+	5000K	20KV Surge Protection 5/8" Bolt		

## PERFORMANCE DATA

MODEL	NORMAL WATTAGE	OPTIC DISTRIBUTION	EPA	LUMENS	EFFICACY
AF55XLED-2818-550	570w	20°	1.9 cu ft	88239 lm	156 lm/w
AF55XLED-2822-850	850w	30° 40° 50°	2.4 cu ft	143627 lm	171 lm/w