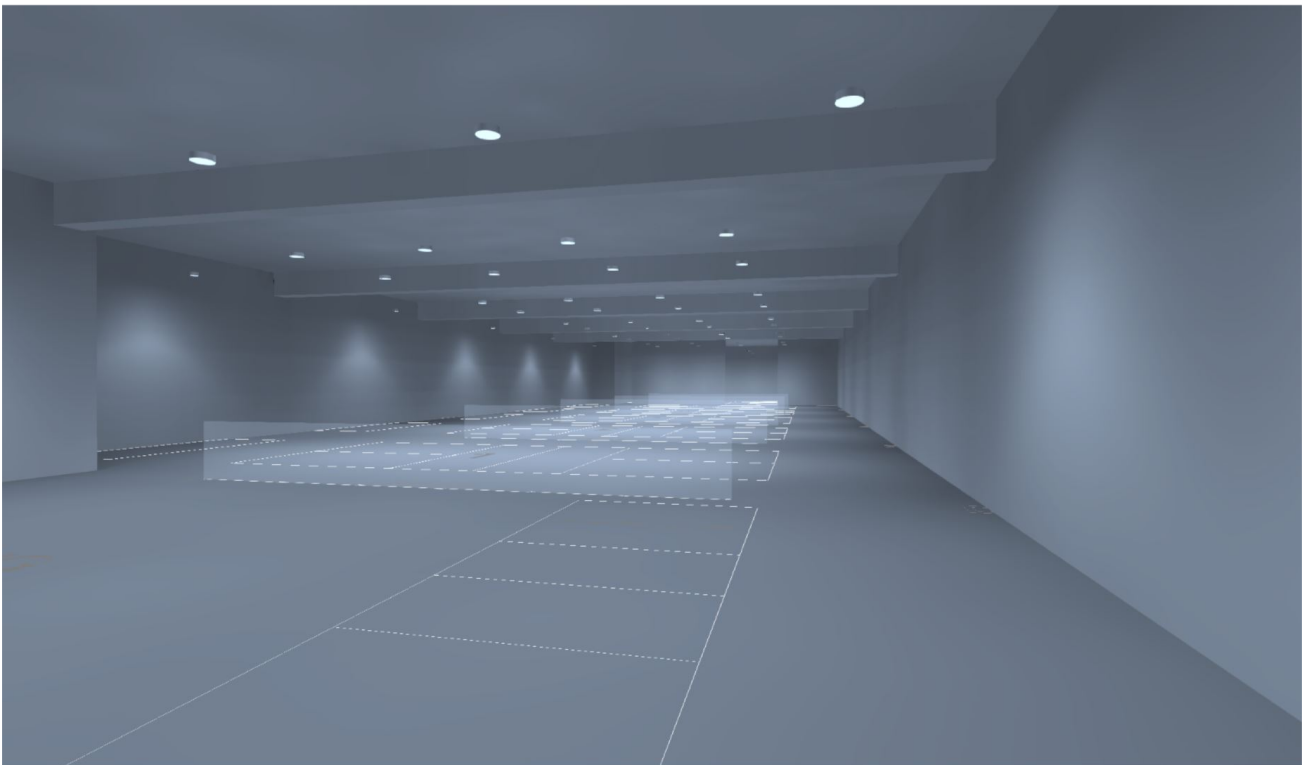


True Pickleball



This photometric report will be generated using methods recommended by the Illuminating Engineering Society of North America (IESNA). The calculations in this report will be based on data provided by a third party. The accuracy of this photometric report is dependent on the accuracy of the data provided. Enduser environment and application (including, but not limited to voltage variation and dirt accumulation) can cause actual photometric performance to differ from the performance calculated using the data provided. This report will be provided without warranty as to accuracy, completeness, reliability, or otherwise. In no event will Access Fixtures be responsible for any loss resulting from any use of this report.

Preface

This photometric report will be generated using methods recommended by the Illuminating Engineering Society of North America (IESNA). The calculations in this report will be based on data provided by a third party. The accuracy of this photometric report is dependent on the accuracy of the data provided. Enduser environment and application (including, but not limited to voltage variation and dirt accumulation) can cause actual photometric performance to differ from the performance calculated using the data provided. This report will be provided without warranty as to accuracy, completeness, reliability, or otherwise. In no event will Access Fixtures be responsible for any loss resulting from any use of this report.

Table of Contents

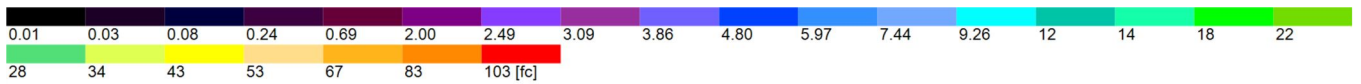
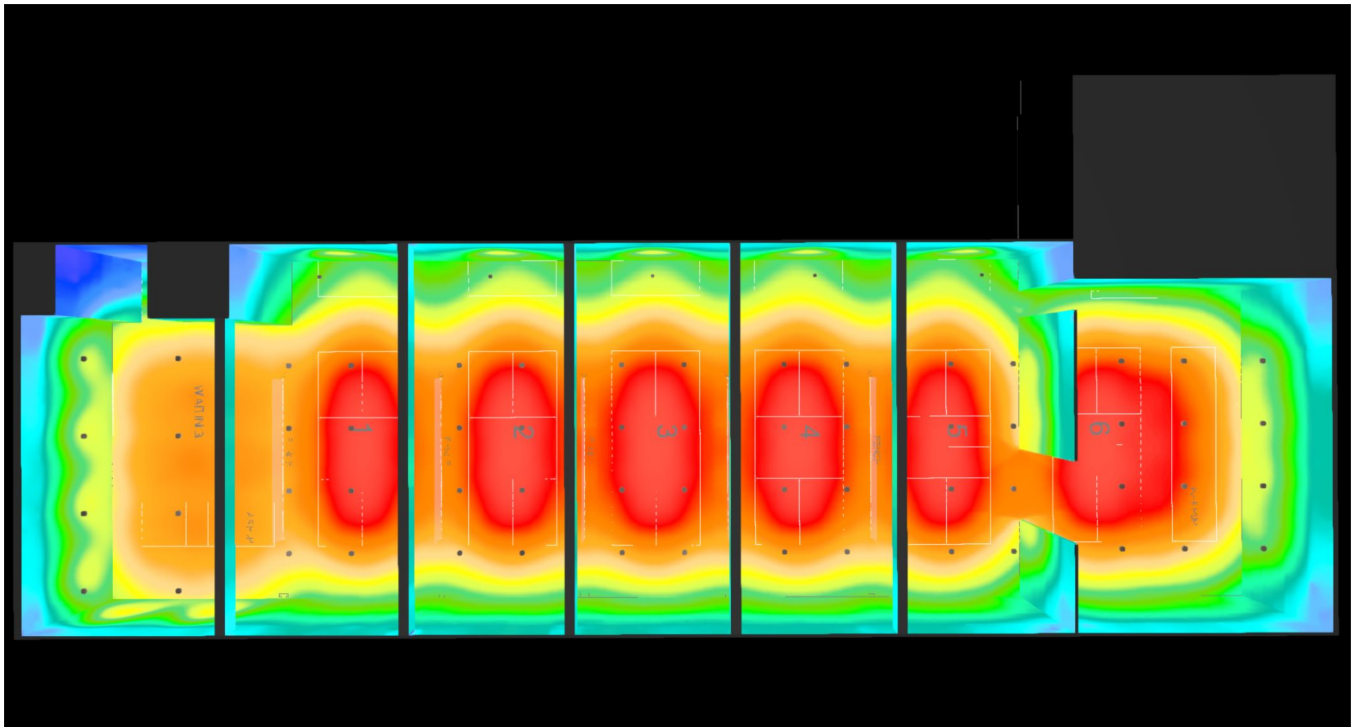
Cover	1
Preface	2
Table of Contents	3
Images	4
Luminaire list	10
Site 1 - Building 1 - Storey 1	
Room 1	
Luminaire layout plan	11
Calculation objects / All On	16
Calculation objects / Court 1 Only	18
Calculation objects / Courts 1-6 Only	20
Control groups	22
Glossary	26

Images



Top View - All On

Images



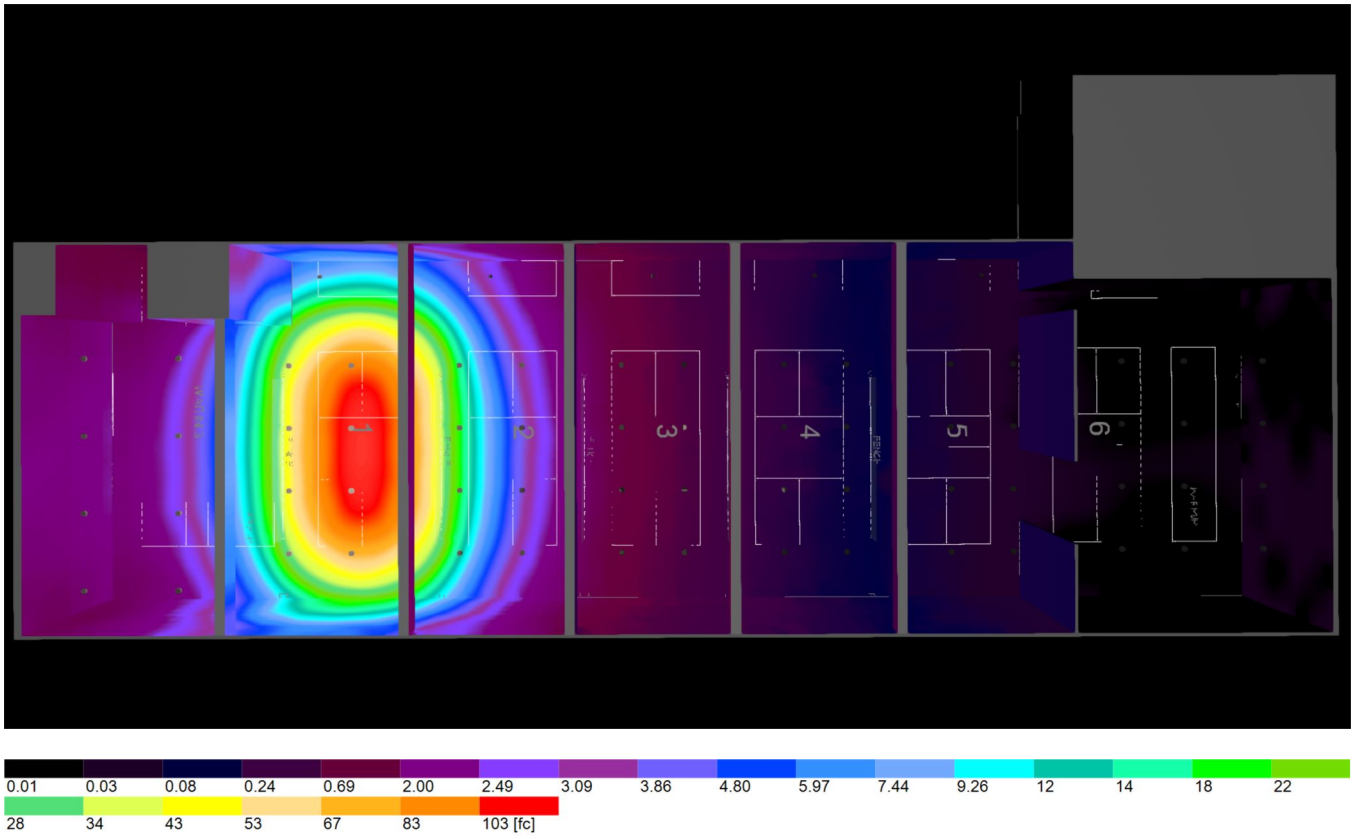
Top View - All On false colors

Images



Top View - Court 1 Only

Images



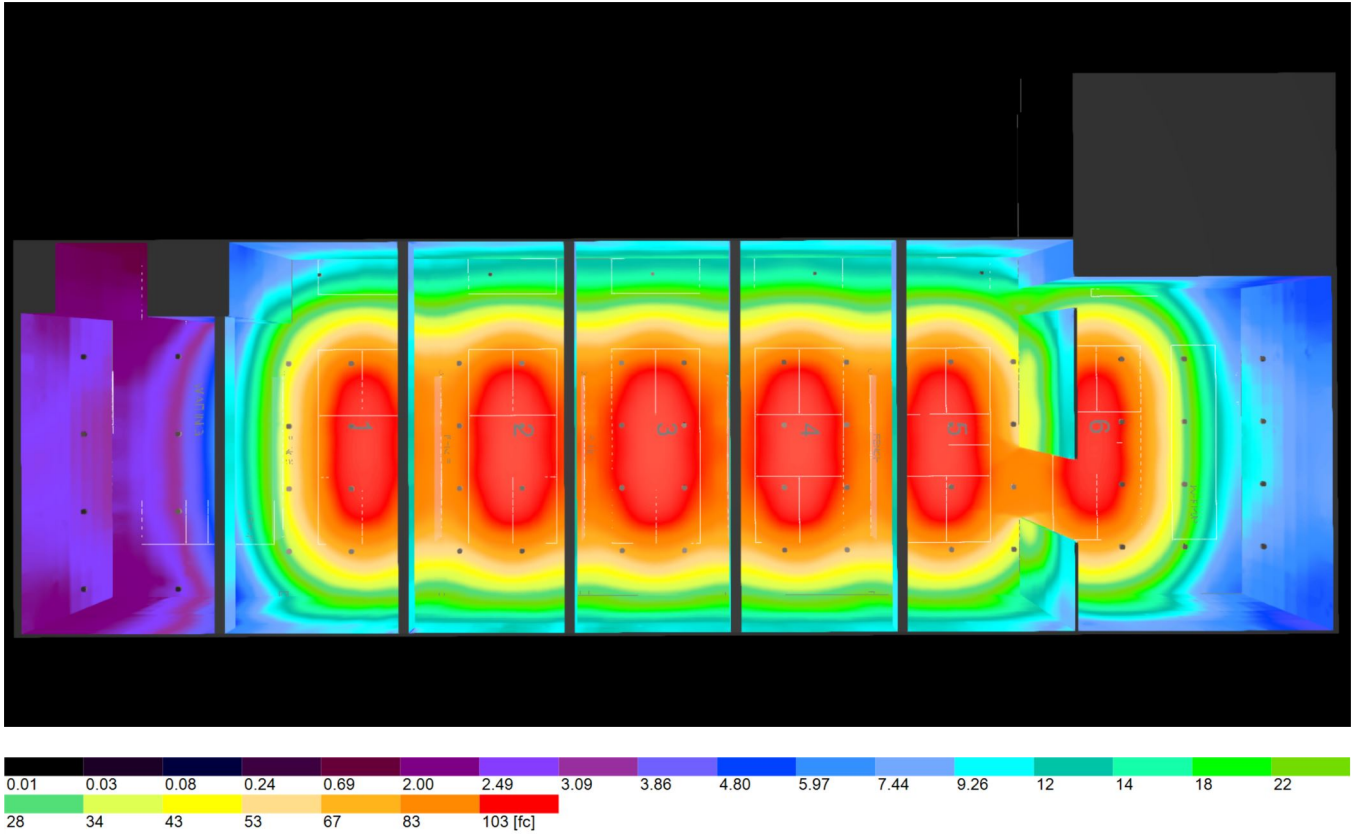
Top View - Court 1 Only false colors

Images



Top View - Courts 1-6 Only

Images



Top View - Courts 1-6 Only false colors

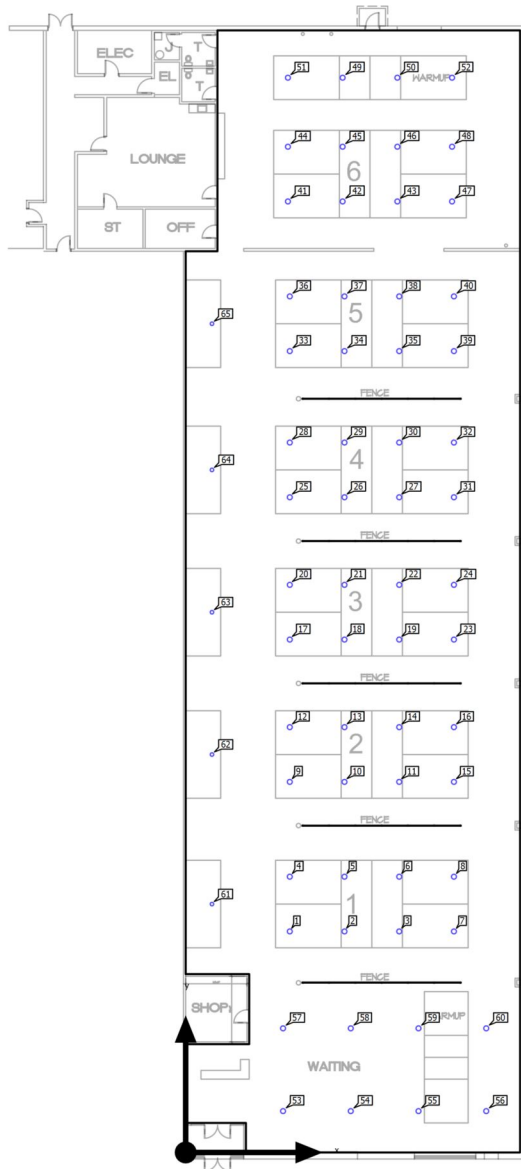
Luminaire list

Φ_{total} 1656165 lm	P_{total} 12348.5 W	Luminous efficacy 134.1 lm/W
------------------------------	--------------------------	---------------------------------

pcs.	Manufacturer	Article No.	Article name	P	Φ	Luminous efficacy
5	Not yet a DIALux member	HIIO 100 AF87XU10 0C1D50D9 0A277J01	HIIO 100w 5K LED IP65 High Bay Luminaire	100.9 W	13233 lm	131.1 lm/W
60	Not yet a DIALux member	HIIO 200 AF87X200 C3D50D90 A277J01	HIIO 200w 5K LED IP65 High Bay Luminaire	197.4 W	26500 lm	134.3 lm/W

Building 1 · Storey 1 · Room 1

Luminaire layout plan



Building 1 · Storey 1 · Room 1

Luminaire layout plan

Not yet a DIALux member - HIIO 100 AF87XU100C1D50D90A277J01 - HIIO 100w 5K LED IP65 High Bay Luminaire

1x

X	Y	Mounting height	Housing rotation	MF	Luminaire
6.000 ft	56.746 ft	18.000 ft	0.0° / 0.0° / 0.0°	0.80	61
6.000 ft	90.905 ft	18.000 ft	0.0° / 0.0° / 0.0°	0.80	62
6.000 ft	123.411 ft	18.000 ft	0.0° / 0.0° / 0.0°	0.80	63
6.000 ft	155.918 ft	18.000 ft	0.0° / 0.0° / 0.0°	0.80	64
6.000 ft	189.304 ft	18.000 ft	0.0° / 0.0° / 0.0°	0.80	65

Building 1 · Storey 1 · Room 1

Luminaire layout plan

Not yet a DIALux member - HIIO 200 AF87X200C3D50D90A277J01 - HIIO 200w 5K LED IP65 High Bay Luminaire

1x

X	Y	Mounting height	Housing rotation	MF	Luminaire
23.782 ft	50.496 ft	18.000 ft	0.0° / 0.0° / -90.0°	0.80	1
36.282 ft	50.496 ft	18.000 ft	0.0° / 0.0° / -90.0°	0.80	2
48.782 ft	50.496 ft	18.000 ft	0.0° / 0.0° / -90.0°	0.80	3
23.782 ft	62.996 ft	18.000 ft	0.0° / 0.0° / -90.0°	0.80	4
36.282 ft	62.996 ft	18.000 ft	0.0° / 0.0° / -90.0°	0.80	5
48.782 ft	62.996 ft	18.000 ft	0.0° / 0.0° / -90.0°	0.80	6
61.282 ft	50.496 ft	18.000 ft	0.0° / 0.0° / -90.0°	0.80	7
61.282 ft	62.996 ft	18.000 ft	0.0° / 0.0° / -90.0°	0.80	8
23.782 ft	84.655 ft	18.000 ft	0.0° / 0.0° / -90.0°	0.80	9
36.282 ft	84.655 ft	18.000 ft	0.0° / 0.0° / -90.0°	0.80	10
48.782 ft	84.655 ft	18.000 ft	0.0° / 0.0° / -90.0°	0.80	11
23.782 ft	97.155 ft	18.000 ft	0.0° / 0.0° / -90.0°	0.80	12
36.282 ft	97.155 ft	18.000 ft	0.0° / 0.0° / -90.0°	0.80	13
48.782 ft	97.155 ft	18.000 ft	0.0° / 0.0° / -90.0°	0.80	14
61.282 ft	84.655 ft	18.000 ft	0.0° / 0.0° / -90.0°	0.80	15
61.282 ft	97.155 ft	18.000 ft	0.0° / 0.0° / -90.0°	0.80	16
23.782 ft	117.161 ft	18.000 ft	0.0° / 0.0° / -90.0°	0.80	17
36.282 ft	117.161 ft	18.000 ft	0.0° / 0.0° / -90.0°	0.80	18
48.782 ft	117.161 ft	18.000 ft	0.0° / 0.0° / -90.0°	0.80	19
23.782 ft	129.661 ft	18.000 ft	0.0° / 0.0° / -90.0°	0.80	20
36.282 ft	129.661 ft	18.000 ft	0.0° / 0.0° / -90.0°	0.80	21

Building 1 · Storey 1 · Room 1
Luminaire layout plan

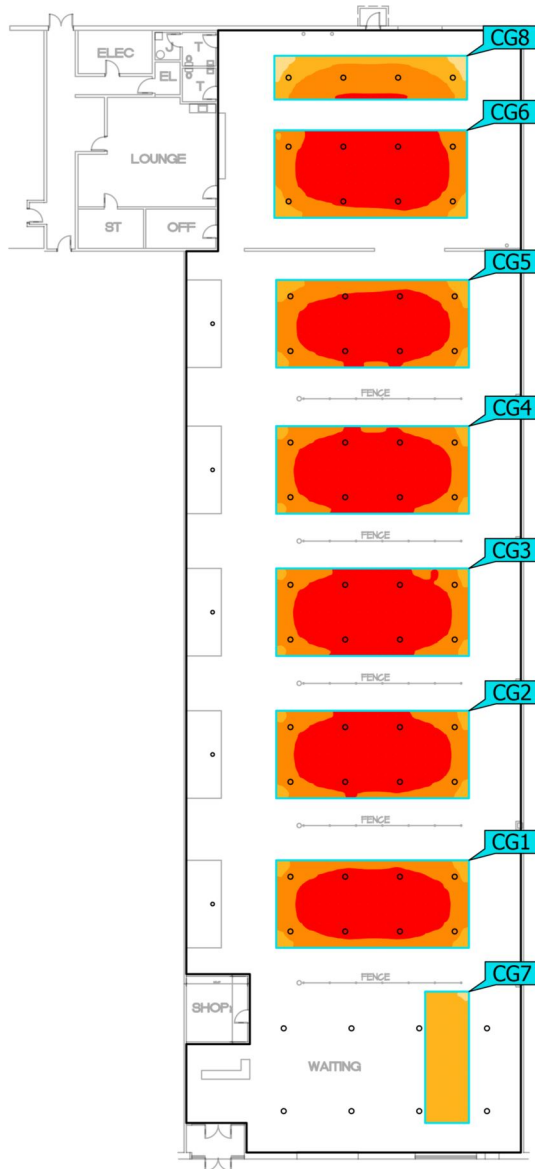
X	Y	Mounting height	Housing rotation	MF	Luminaire
48.782 ft	129.661 ft	18.000 ft	0.0° / 0.0° / -90.0°	0.80	22
61.282 ft	117.161 ft	18.000 ft	0.0° / 0.0° / -90.0°	0.80	23
61.282 ft	129.661 ft	18.000 ft	0.0° / 0.0° / -90.0°	0.80	24
23.782 ft	149.668 ft	18.000 ft	0.0° / 0.0° / -90.0°	0.80	25
36.282 ft	149.668 ft	18.000 ft	0.0° / 0.0° / -90.0°	0.80	26
48.782 ft	149.668 ft	18.000 ft	0.0° / 0.0° / -90.0°	0.80	27
23.782 ft	162.168 ft	18.000 ft	0.0° / 0.0° / -90.0°	0.80	28
36.282 ft	162.168 ft	18.000 ft	0.0° / 0.0° / -90.0°	0.80	29
48.782 ft	162.168 ft	18.000 ft	0.0° / 0.0° / -90.0°	0.80	30
61.282 ft	149.668 ft	18.000 ft	0.0° / 0.0° / -90.0°	0.80	31
61.282 ft	162.168 ft	18.000 ft	0.0° / 0.0° / -90.0°	0.80	32
23.782 ft	183.054 ft	18.000 ft	0.0° / 0.0° / -90.0°	0.80	33
36.282 ft	183.054 ft	18.000 ft	0.0° / 0.0° / -90.0°	0.80	34
48.782 ft	183.054 ft	18.000 ft	0.0° / 0.0° / -90.0°	0.80	35
23.782 ft	195.554 ft	18.000 ft	0.0° / 0.0° / -90.0°	0.80	36
36.282 ft	195.554 ft	18.000 ft	0.0° / 0.0° / -90.0°	0.80	37
48.782 ft	195.554 ft	18.000 ft	0.0° / 0.0° / -90.0°	0.80	38
61.282 ft	183.054 ft	18.000 ft	0.0° / 0.0° / -90.0°	0.80	39
61.282 ft	195.554 ft	18.000 ft	0.0° / 0.0° / -90.0°	0.80	40
23.356 ft	217.240 ft	18.000 ft	0.0° / 0.0° / -90.0°	0.80	41
35.856 ft	217.240 ft	18.000 ft	0.0° / 0.0° / -90.0°	0.80	42
48.356 ft	217.240 ft	18.000 ft	0.0° / 0.0° / -90.0°	0.80	43
23.356 ft	229.740 ft	18.000 ft	0.0° / 0.0° / -90.0°	0.80	44

Building 1 · Storey 1 · Room 1
Luminaire layout plan

X	Y	Mounting height	Housing rotation	MF	Luminaire
35.856 ft	229.740 ft	18.000 ft	0.0° / 0.0° / -90.0°	0.80	45
48.356 ft	229.740 ft	18.000 ft	0.0° / 0.0° / -90.0°	0.80	46
60.856 ft	217.240 ft	18.000 ft	0.0° / 0.0° / -90.0°	0.80	47
60.856 ft	229.740 ft	18.000 ft	0.0° / 0.0° / -90.0°	0.80	48
22.243 ft	9.453 ft	18.000 ft	0.0° / 0.0° / -90.0°	0.80	53
37.716 ft	9.453 ft	18.000 ft	0.0° / 0.0° / -90.0°	0.80	54
53.189 ft	9.453 ft	18.000 ft	0.0° / 0.0° / -90.0°	0.80	55
68.662 ft	9.453 ft	18.000 ft	0.0° / 0.0° / -90.0°	0.80	56
22.243 ft	28.359 ft	18.000 ft	0.0° / 0.0° / -90.0°	0.80	57
37.716 ft	28.359 ft	18.000 ft	0.0° / 0.0° / -90.0°	0.80	58
53.189 ft	28.359 ft	18.000 ft	0.0° / 0.0° / -90.0°	0.80	59
68.662 ft	28.359 ft	18.000 ft	0.0° / 0.0° / -90.0°	0.80	60
35.856 ft	245.503 ft	18.000 ft	0.0° / 0.0° / -90.0°	0.80	49
48.356 ft	245.503 ft	18.000 ft	0.0° / 0.0° / -90.0°	0.80	50
23.356 ft	245.503 ft	18.000 ft	0.0° / 0.0° / -90.0°	0.80	51
60.856 ft	245.503 ft	18.000 ft	0.0° / 0.0° / -90.0°	0.80	52

Building 1 · Storey 1 · Room 1 (All On)

Calculation objects



Building 1 · Storey 1 · Room 1 (All On)

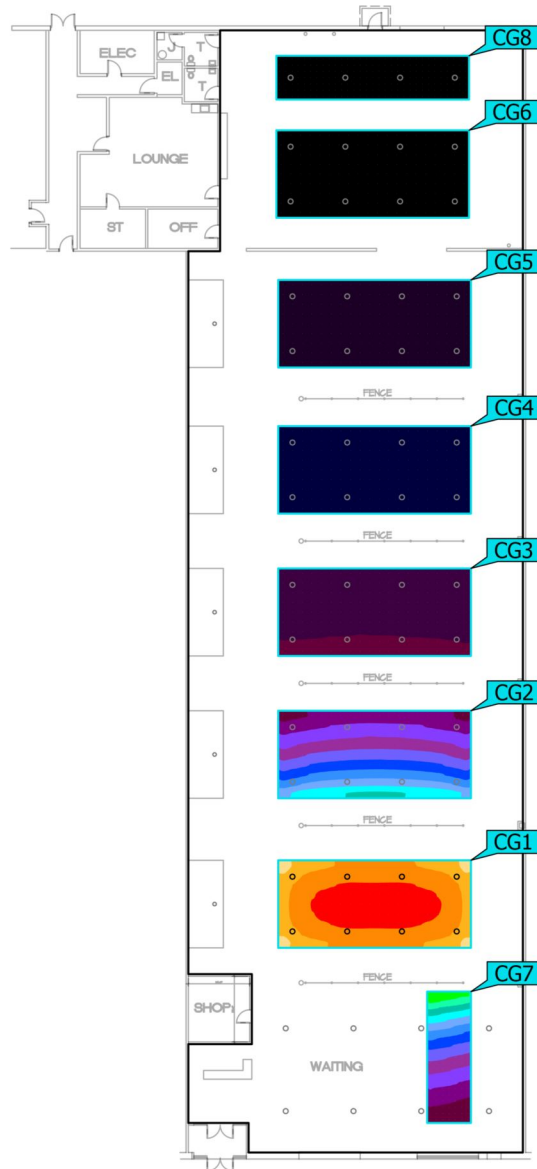
Calculation objects

Calculation surfaces

Properties	\bar{E}	E_{min}	E_{max}	\bar{E}/E_{min}	E_{max}/E_{min}	Index
Court 1 Perpendicular illuminance Height: 0.000 ft	105 fc	73.1 fc	124 fc	1.44	1.69	CG1
Court 2 Perpendicular illuminance Height: 0.000 ft	107 fc	74.3 fc	125 fc	1.44	1.69	CG2
Court 3 Perpendicular illuminance Height: 0.000 ft	108 fc	76.1 fc	126 fc	1.42	1.66	CG3
Court 4 Perpendicular illuminance Height: 0.000 ft	107 fc	74.4 fc	126 fc	1.44	1.69	CG4
Court 5 Perpendicular illuminance Height: 0.000 ft	104 fc	68.4 fc	123 fc	1.52	1.80	CG5
Court 6 Perpendicular illuminance Height: 0.000 ft	107 fc	66.7 fc	125 fc	1.61	1.88	CG6
Warmup 1 Perpendicular illuminance Height: 0.000 ft	73.5 fc	64.7 fc	78.1 fc	1.14	1.21	CG7
Warmup 2 Perpendicular illuminance Height: 0.000 ft	85.2 fc	54.4 fc	105 fc	1.57	1.93	CG8

Building 1 · Storey 1 · Room 1 (Court 1 Only)

Calculation objects



Building 1 · Storey 1 · Room 1 (Court 1 Only)

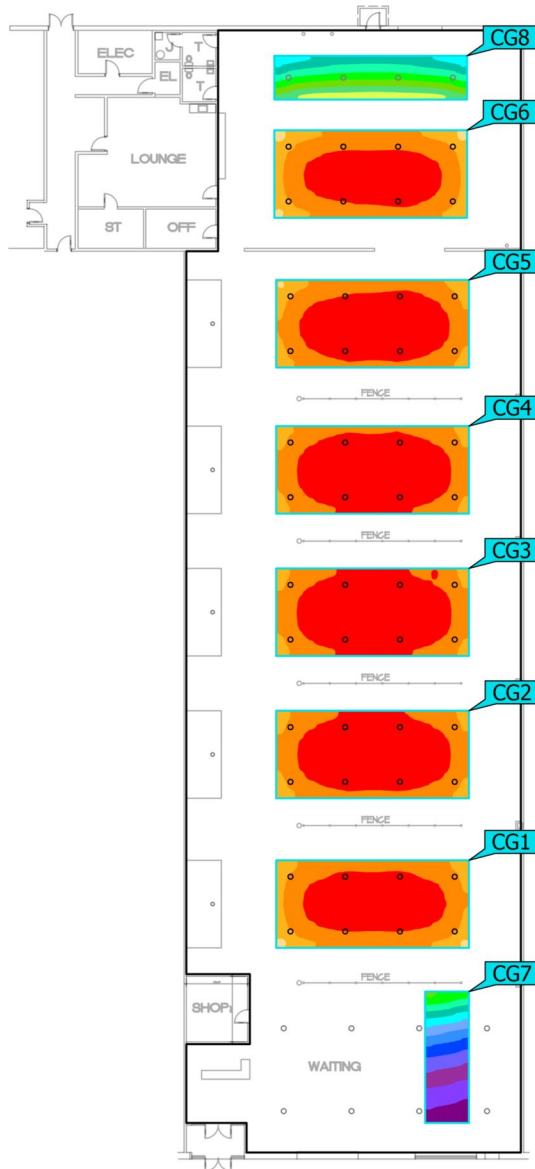
Calculation objects

Calculation surfaces

Properties	\bar{E}	E_{min}	E_{max}	\bar{E}/E_{min}	E_{max}/E_{min}	Index
Court 1 Perpendicular illuminance Height: 0.000 ft	93.2 fc	59.3 fc	114 fc	1.57	1.92	CG1
Court 2 Perpendicular illuminance Height: 0.000 ft	4.99 fc	1.85 fc	11.8 fc	2.70	6.39	CG2
Court 3 Perpendicular illuminance Height: 0.000 ft	0.56 fc	0.35 fc	0.86 fc	1.61	2.45	CG3
Court 4 Perpendicular illuminance Height: 0.000 ft	0.13 fc	0.089 fc	0.19 fc	1.49	2.15	CG4
Court 5 Perpendicular illuminance Height: 0.000 ft	0.043 fc	0.031 fc	0.060 fc	1.40	1.95	CG5
Court 6 Perpendicular illuminance Height: 0.000 ft	0.008 fc	0.005 fc	0.017 fc	1.84	3.84	CG6
Warmup 1 Perpendicular illuminance Height: 0.000 ft	6.07 fc	1.59 fc	21.8 fc	3.81	13.7	CG7
Warmup 2 Perpendicular illuminance Height: 0.000 ft	0.006 fc	0.004 fc	0.009 fc	1.59	2.37	CG8

Building 1 · Storey 1 · Room 1 (Courts 1-6 Only)

Calculation objects



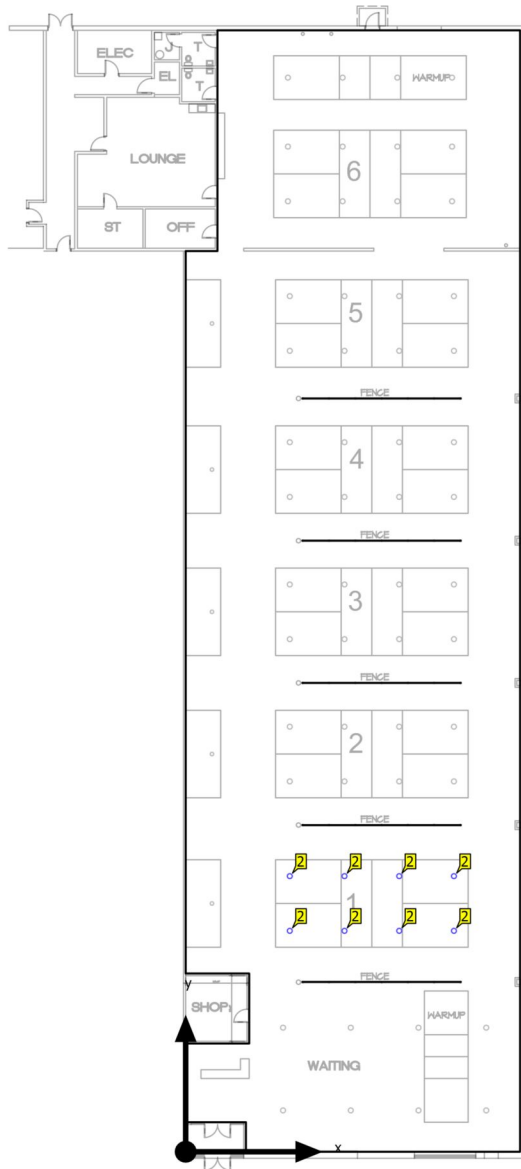
Building 1 · Storey 1 · Room 1 (Courts 1-6 Only)

Calculation objects

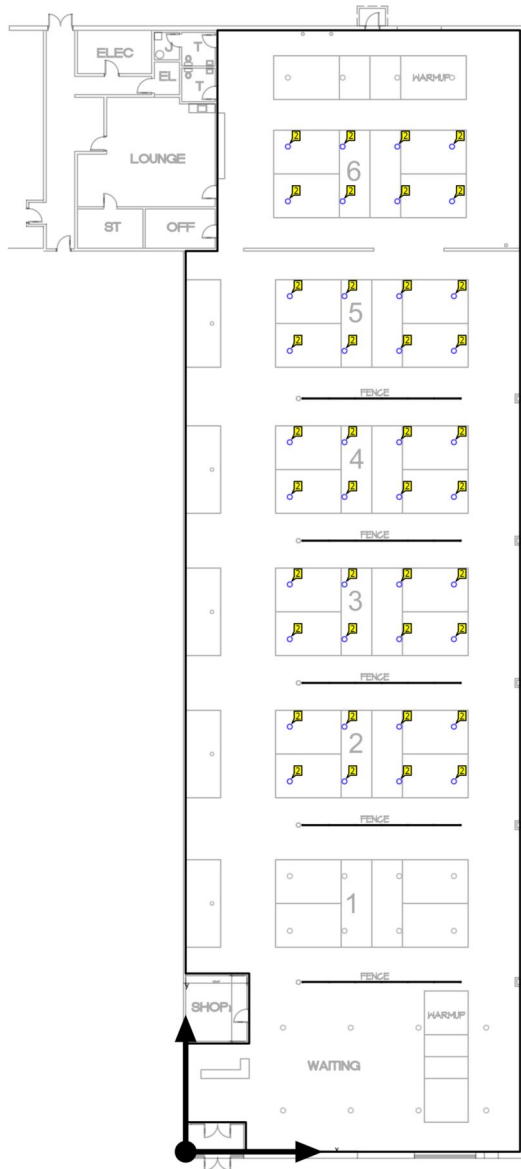
Calculation surfaces

Properties	\bar{E}	E_{min}	E_{max}	\bar{E}/E_{min}	E_{max}/E_{min}	Index
Court 1 Perpendicular illuminance Height: 0.000 ft	99.2 fc	62.9 fc	119 fc	1.58	1.89	CG1
Court 2 Perpendicular illuminance Height: 0.000 ft	105 fc	71.4 fc	124 fc	1.47	1.74	CG2
Court 3 Perpendicular illuminance Height: 0.000 ft	107 fc	74.3 fc	125 fc	1.44	1.69	CG3
Court 4 Perpendicular illuminance Height: 0.000 ft	106 fc	72.6 fc	125 fc	1.46	1.72	CG4
Court 5 Perpendicular illuminance Height: 0.000 ft	103 fc	64.9 fc	122 fc	1.58	1.89	CG5
Court 6 Perpendicular illuminance Height: 0.000 ft	97.1 fc	61.5 fc	117 fc	1.58	1.91	CG6
Warmup 1 Perpendicular illuminance Height: 0.000 ft	6.84 fc	2.08 fc	23.1 fc	3.28	11.1	CG7
Warmup 2 Perpendicular illuminance Height: 0.000 ft	21.8 fc	9.61 fc	40.5 fc	2.27	4.22	CG8

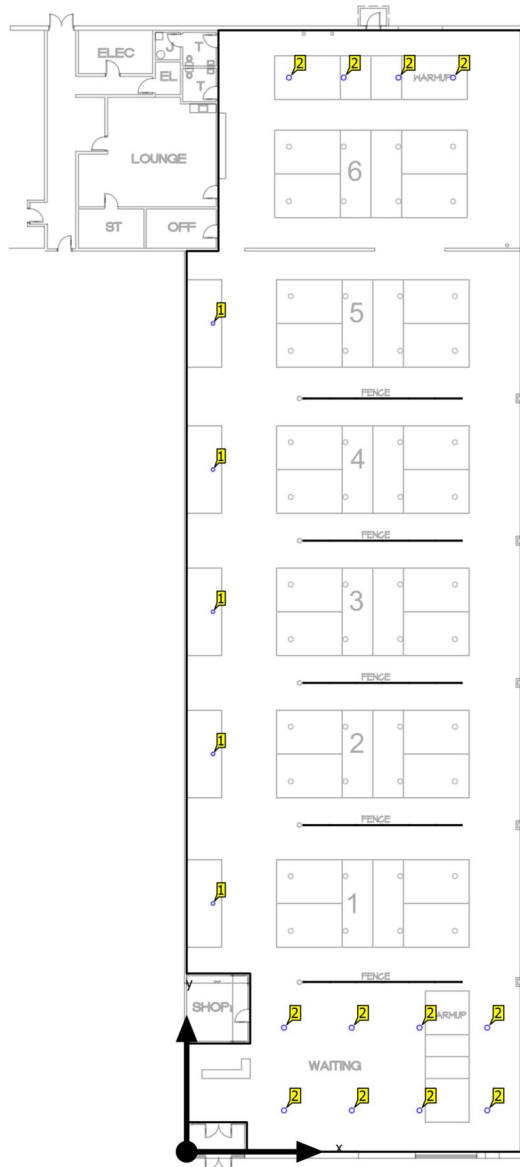
Building 1 · Storey 1 · Room 1
Control group CG 1



Building 1 · Storey 1 · Room 1
Control group CG 2



Building 1 · Storey 1 · Room 1
Control group CG 3



Building 1 · Storey 1 · Room 1

Control groups

Control group	CG 1	CG 2	CG 3
All On	100	100	100
Courts 1-6 Only	100	100	-
Court 1 Only	100	-	-

Dimming values [%]

pcs.	Manufacturer	Article No.	Article name	P	Index
5	Not yet a DIALux member	HIIO 100 AF87XU100C1D5 0D90A277J01	HIIO 100w 5K LED IP65 High Bay Luminaire	100.9 W	1
60	Not yet a DIALux member	HIIO 200 AF87X200C3D50 D90A277J01	HIIO 200w 5K LED IP65 High Bay Luminaire	197.4 W	2

Glossary

A

A Formula symbol for a surface in the geometry

B

Background area The background area borders the direct ambient area according to DIN EN 12464-1 and reaches up to the borders of the room. In larger rooms, the background area is at least 3 m wide. It is located horizontally at floor level.

C

CCT (Engl. correlated colour temperature)
 Body temperature of a thermal radiator which serves to describe its light colour. Unit: Kelvin [K]. The lesser the numerical value the redder; the greater the numerical value the bluer the light colour. The colour temperature of gas-discharge lamps and semi-conductors are termed "correlated colour temperature" in contrast to the colour temperature of thermal radiators.

Allocation of the light colours to the colour temperature ranges acc. to EN 12464-1:

Light colour - colour temperature [K]
 warm white (ww) < 3,300 K
 neutral white (nw) ≥ 3,300 – 5,300 K
 daylight white (dw) > 5,300 K

Clearance height The designation for the distance between upper edge of the floor and bottom edge of the ceiling (in the completely furnished status of room).

Control group A group of luminaires that are dimmed and controlled together. For each lighting scene, a control group provides its own dimming value. All luminaires within a control group share this dimming value. The control groups with their luminaires are automatically determined by DIALux on the basis of the created light scenes and their luminaire groups.

CRI (Engl. colour rendering index)
 Designation for the colour rendering index of a luminaire or a lamp acc. to DIN 6169: 1976 or CIE 13.3: 1995.

The general colour rendering index Ra (or CRI) is a dimensionless figure that describes the quality of a white light source in regards to its similarity with the remission spectra of defined 8 test colours (see DIN 6169 or CIE 1974) to a reference light source.

Glossary

D

Daylight autonomy	Describes what percentage of the daily working time the required illuminance is met by daylight. The nominal illuminance is used from the room profile, unlike described in EN 17037. The calculation is not done in the centre of the room but at the placed sensor measuring point. A room is considered sufficiently supplied with daylight if it achieves at least 50% daylight autonomy.
Daylight factor	Ratio of the illuminance achieved solely by daylight incidence at a point in the inside to the horizontal illuminance in the outer area under an unobstructed sky. Formula symbol: D (Engl. daylight factor) Unit: %
Daylight quotient effective area	A calculation surface within which the daylight quotient is calculated.

E

Energy evaluation	<p>Based on an hourly calculation procedure for daylight in indoor spaces, considering the project geometry and any existing daylight control systems. Orientation and location of the project are also considered. The calculation uses the specified system power of the luminaires to determine the energy demand. A linear relationship between power and luminous flux in the dimmed state is assumed for daylight-controlled luminaires. Times of use and nominal illuminance are determined from the usage profiles of the spaces. Switched-on luminaires that are explicitly excluded from control also consider the specified times-of-use. The daylight control systems use a simplified control logic that closes them at an outdoor horizontal illuminance of 27,500lx.</p> <p>The calendar year 2022 is used as a reference only. It is not a simulation of this year. The reference year is only used to assign the days of the week to the calculated results. The changeover to summer time is not considered. The reference sky type used is the average sky described in CIE 110 without direct sunlight.</p> <p>The method was developed together with the Fraunhofer Institute for Building Physics and is available for review by the Joint Working Group 1 ISO TC 274 as an extension of the previous annual regression-based method.</p>
Eta (η)	<p>(light output ratio) The light output ratio describes what percentage of the luminous flux of a free radiating lamp (or LED module) is emitted by the luminaire when installed.</p> <p>Unit: %</p>

Glossary

G

g₁	Often also U _o (Engl. overall uniformity) Designates the overall uniformity of the illuminance on a surface. It is the quotient from E _{min} to \bar{E} and is required, for instance, in standards for illumination of workstations.
g₂	Actually it designates the "non-uniformity" of the illuminance on a surface. It is the quotient of E _{min} to E _{max} and is generally only relevant for certifying the emergency lighting acc. to EN 1838.

I

Illuminance	Describes the ratio of the luminous flux that strikes a certain surface to the size of this surface ($\text{lm}/\text{m}^2 = \text{lx}$). The illuminance is not tied to an object surface. It can be determined anywhere in space (inside or outside). The illuminance is not a product feature because it is a recipient value. Luxometers are used for measuring. Unit: Lux Abbreviation: lx Formula symbol: E
Illuminance, adaptive	For the determining of the middle adaptive illuminance on a surface, this is rastered "adaptively". In the area of large illuminance differences within the surface, the raster is subdivided finer; within lesser differences, a rougher classification is made.
Illuminance, horizontal	Illuminance that is calculated or measured on a horizontal (level) surface (this can be for example a table top or the floor). The horizontal illuminance is usually identified by the formula letter E _h .
Illuminance, perpendicular	Illuminance that is calculated or measured plumb-vertical to a surface. This needs to be taken into account for tilted surfaces. If the surface is horizontal or vertical, then there is no difference between the perpendicular and the horizontal or vertical illuminance.
Illuminance, vertical	Illuminance that is calculated or measured on a vertical surface (this can be for example the front of some shelves). The vertical illuminance is usually identified by the formula letter E _v .

L

LENI	(Engl. lighting energy numeric indicator) Lighting energy numeric indicator acc. to EN 15193 Unit: kWh/(m ² * a)
-------------	---

Glossary

LLMF	<p>(Engl. lamp lumen maintenance factor)/acc. to CIE 97: 2005 Lamp flux maintenance factor that takes the luminous flux reduction into account of a luminaire or an LED module in the course of the operating time. The lamp flux maintenance factor is specified as a decimal digit and can have a maximum value of 1 (no luminous flux reduction existing).</p>
LMF	<p>(Engl. luminaire maintenance factor)/acc. to CIE 97: 2005 Luminaire maintenance factor that takes the soiling into account of the luminaire in the course of the operating time. The luminaire maintenance factor is specified as a decimal digit and can have a maximum value of 1 (no soiling existing).</p>
LSF	<p>(Engl. lamp survival factor)/acc. to CIE 97: 2005 Lamp survival factor that takes the total failure into account of a luminaire in the course of the operating time. The lamp survival factor is specified as a decimal digit and can have a maximum value of 1 (no failures existing within the time concerned or prompt replacement after the failure).</p>
Luminance	<p>Dimension for the "brightness impression" that the human eye has of a surface. The surface itself can emit light thereby or light striking it can be reflected (emitter value). It is the only photometric value that the human eye can perceive.</p> <p>Unit: Candela per square metre Abbreviation: cd/m² Formula symbol: L</p>
Luminous efficacy	<p>Ratio of the emitted luminous flux Φ [lm] to the absorbed electrical power P [W] Unit: lm/W.</p> <p>This ratio can be formed for the lamp or LED module (lamp or module light output), the lamp or module with control gear (system light output) and the complete luminaire (luminaire light output).</p>
Luminous flux	<p>Dimension for the total light output that is emitted from one light source in all directions. It is thus an "emitter value" that specifies the entire emitting output. The luminous flux of a light source can only be determined in a laboratory. A difference is made between the lamp or LED module luminous flux and the luminaire luminous flux.</p> <p>Unit: Lumen Abbreviation: lm Formula symbol: Φ</p>
Luminous intensity	<p>Describes the intensity of the light in a certain direction (emitter value). The luminous intensity is a matter of the luminous flux Φ that is emitted in a certain spherical angle Ω. The radiation characteristics of a light source are presented graphically in a light distribution curve (LDC). The luminous intensity is an SI base unit.</p> <p>Unit: Candela Abbreviation: cd Formula symbol: I</p>

Glossary

M

Maintenance factor	See MF
MF	<p>(Engl. maintenance factor)/acc. to CIE 97: 2005</p> <p>Maintenance factor as decimal number between 0 and 1 that describes the ratio of the new value of a photometric planning parameter (e.g. of the illuminance) to a maintenance value after a certain time. The maintenance factor takes into account the soiling of luminaires and rooms as well as the luminous flux reduction and the failure of light sources.</p> <p>The maintenance factor is taken into account either overall or determined in detail acc. to CIE 97: 2005 by the formula $RMF \times LMF \times LLMF \times LSF$.</p>

P

P	<p>(Engl. power)</p> <p>Electric power consumption</p> <p>Unit: watt</p> <p>Abbreviation: W</p>
---	---

R

$R_{(UG)} \max$	<p>Measure of the psychological glare in indoor spaces.</p> <p>In addition to the luminance of luminaires, the level of the $R_{(UG)}$ value also depends on the observer position, the viewing direction and the ambient luminance. The calculation is made according to the table method, see CIE 117. Among other things, EN 12464-1:2021 specifies maximum permissible $R_{(UG)}$-values $R_{(UGL)}$ for various indoor workplaces.</p>
Reflection factor	The reflection factor of a surface describes how much of the striking light is reflected back. The reflection factor is defined by the colour of the surface.
RMF	<p>(Engl. room maintenance factor)/acc. to CIE 97: 2005</p> <p>Room maintenance factor that takes the soiling into account of the space encompassing surfaces in the course of the operating time. The room maintenance factor is specified as a decimal digit and can have a maximum value of 1 (no soiling existing).</p>

S

Surrounding area	The ambient area directly borders the area of the visual task and should be planned with a width of at least 0.5 m according to DIN EN 12464-1. It is at the same height as the area of the visual task.
------------------	--

Glossary

U

UGR (max) (unified glare rating)
Measure for the psychological glare effect in interiors.
In addition to luminaire luminance, the UGR value also depends on the position of the observer, the viewing direction and the ambient luminance. Among other things, EN 12464-1 specifies maximum permissible UGR values for various indoor workplaces.

UGR observer Calculation point in the room, for the DIALux the UGR value is determined. The location and height of the calculation point should correspond to the typical observer position (position and eye level of the user).

V

Visual task area The area that is needed for carrying out the visual task in accordance with DIN EN 12464 -1. The height corresponds with the height at which the visual task is executed.

W

Wall zone Circumferential area between working plane and walls which is not taken into account for the calculation.

Working plane Virtual measuring or calculation surface at the height of the visual task that generally follows the room geometry. The working plane may also feature a wall zone.
