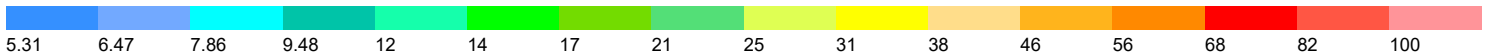
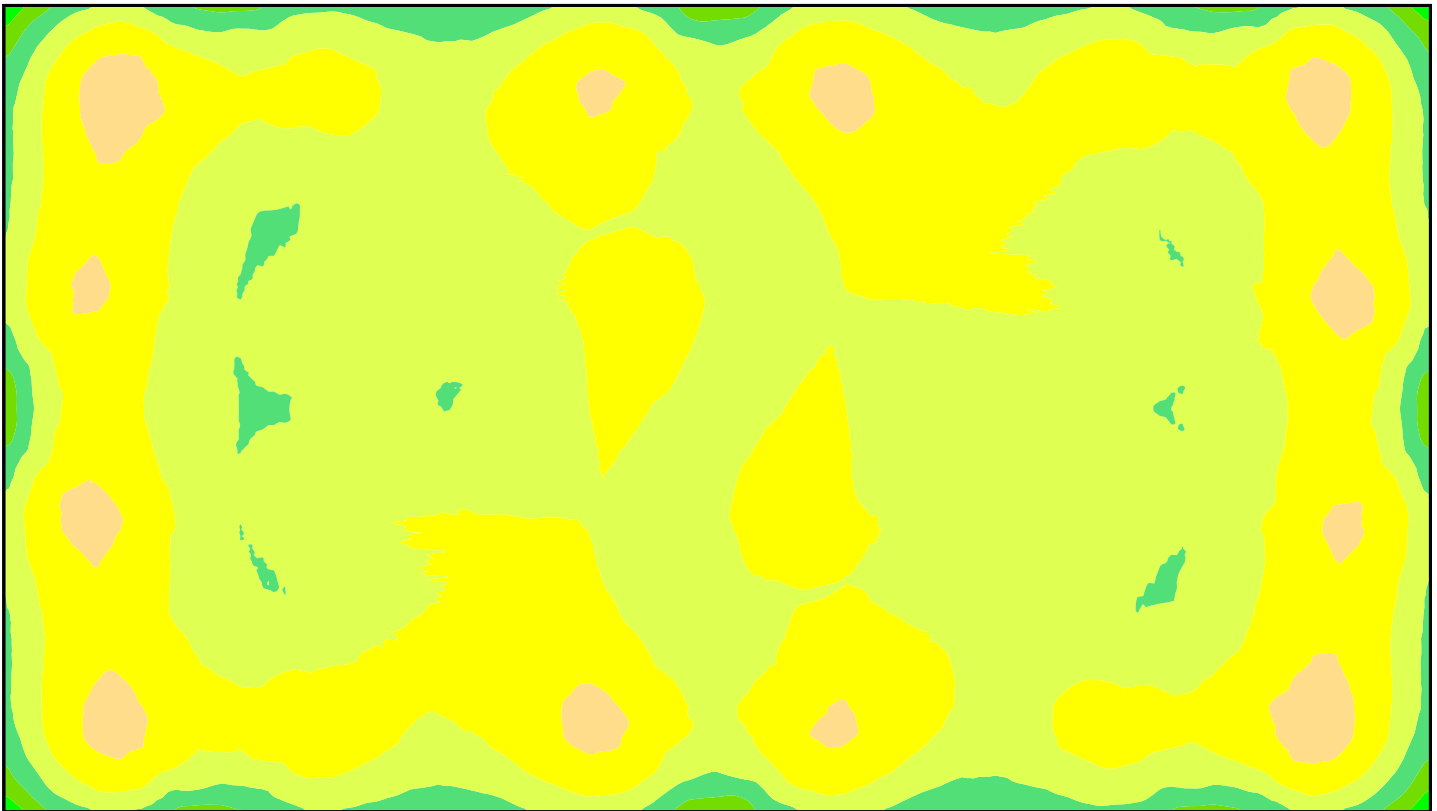


130' x 230' Soccer Field 6
37' Poles and 22 fixtures
30fc - 2.79 Max/Min



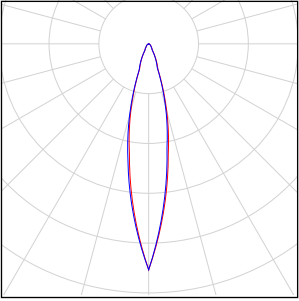
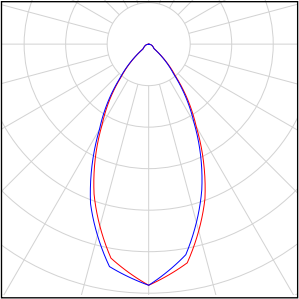
This photometric report will be generated using methods recommended by the Illuminating Engineering Society of North America (IESNA). The calculations in this report will be based on data provided by a third party. The accuracy of this photometric report is dependent on the accuracy of the data provided. Enduser environment and application (including, but not limited to voltage variation and dirt accumulation) can cause actual photometric performance to differ from the performance calculated using the data provided. This report will be provided without warranty as to accuracy, completeness, reliability, or otherwise. In no event will Access Fixtures be responsible for any loss resulting from any use of this report.

Content

Soccer Field

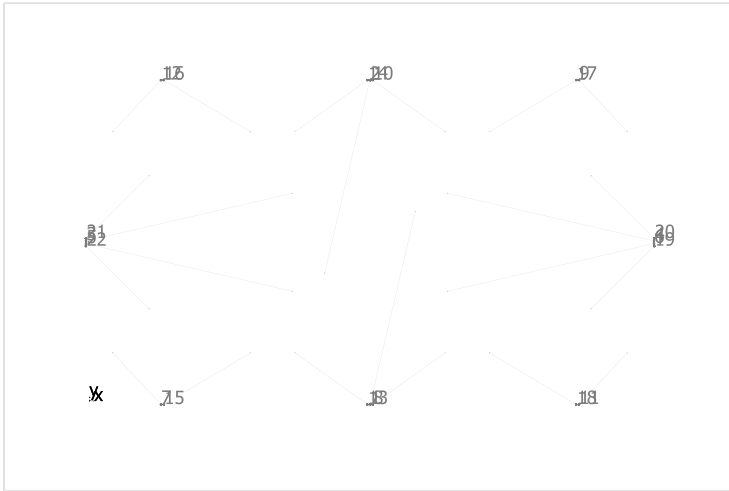
Luminaire list.....	3
Site 1	
Luminaire layout plan.....	4
Field	
Workplane (Field) / Perpendicular illuminance (adaptive).....	5

Soccer Field

Quantity	Luminaire (Luminous emittance)		
6	Access Fixtures - STAD AF55XLED2810-L1008 WITH TYPE N3 OPTICS Luminous emittance 1 Fitting: 1x1008*SEOUL SAW7C22B-NZM50C33Z6 5700K Light output ratio: 96.27% Lamp luminous flux: 65094 lm Luminaire luminous flux: 62665 lm Power: 362.7 W Luminous efficacy: 172.8 lm/W Colorimetric data 1x: CCT 3000 K, CRI 100	See our luminaire catalog for an image of the luminaire.	
16	Access Fixtures - STAD AF55XLED2810-L1152 WITH TYPE N5 OPTICS Luminous emittance 1 Fitting: 1x1152*SEOUL SAW7C22B-NZM50C33Z6 5700K Light output ratio: 98.87% Lamp luminous flux: 74777 lm Luminaire luminous flux: 73935 lm Power: 437.2 W Luminous efficacy: 169.1 lm/W Colorimetric data 1x: CCT 3000 K, CRI 100	See our luminaire catalog for an image of the luminaire.	

Total lamp luminous flux: 1586996 lm, Total luminaire luminous flux: 1558950 lm, Total Load: 9171.4 W, Luminous efficacy: 170.0 lm/W

Site 1



Access Fixtures STAD AF55XLED2810-L1008 WITH TYPE N3 OPTICS

No.	X [ft]	Y [ft]	Mounting height [ft]	Light loss factor
1	115.000	-1.589	37.000	0.80
2	115.000	131.589	37.000	0.80
3	-1.627	65.500	37.000	0.80
4	231.622	65.500	37.000	0.80
5	-1.627	64.500	37.000	0.80
6	231.622	64.500	37.000	0.80

Access Fixtures STAD AF55XLED2810-L1152 WITH TYPE N5 OPTICS

No.	X [ft]	Y [ft]	Mounting height [ft]	Light loss factor
7	29.333	-1.589	37.000	0.80
8	116.000	-1.589	37.000	0.80
9	200.667	131.589	37.000	0.80
10	116.000	131.589	37.000	0.80
11	200.667	-1.589	37.000	0.80
12	29.333	131.589	37.000	0.80
13	114.000	-1.589	37.000	0.80
14	114.000	131.589	37.000	0.80
15	30.333	-1.589	37.000	0.80
16	30.333	131.589	37.000	0.80
17	199.667	131.589	37.000	0.80
18	199.667	-1.589	37.000	0.80
19	231.622	63.500	37.000	0.80
20	231.622	66.500	37.000	0.80
21	-1.594	66.500	37.000	0.80
22	-1.594	63.500	37.000	0.80

Workplane (Field) / Perpendicular illuminance (adaptive)



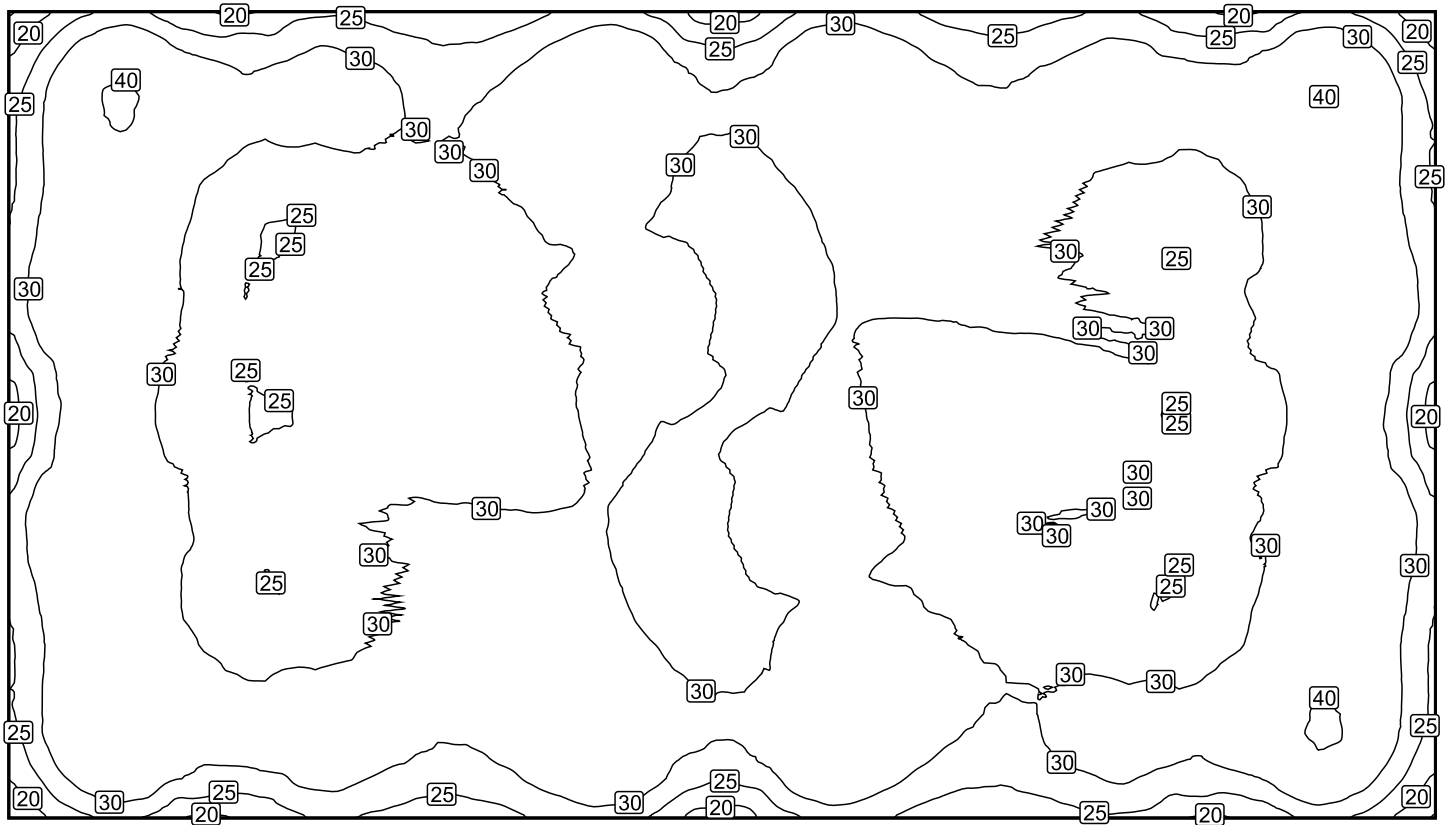
Workplane (Field): Perpendicular illuminance (adaptive) (Surface)

Light scene: Light scene 1

Average: 30.4 fc, Min: 14.7 fc, Max: 41.1 fc, Mean/Min: 2.06, Max/Min: 2.79

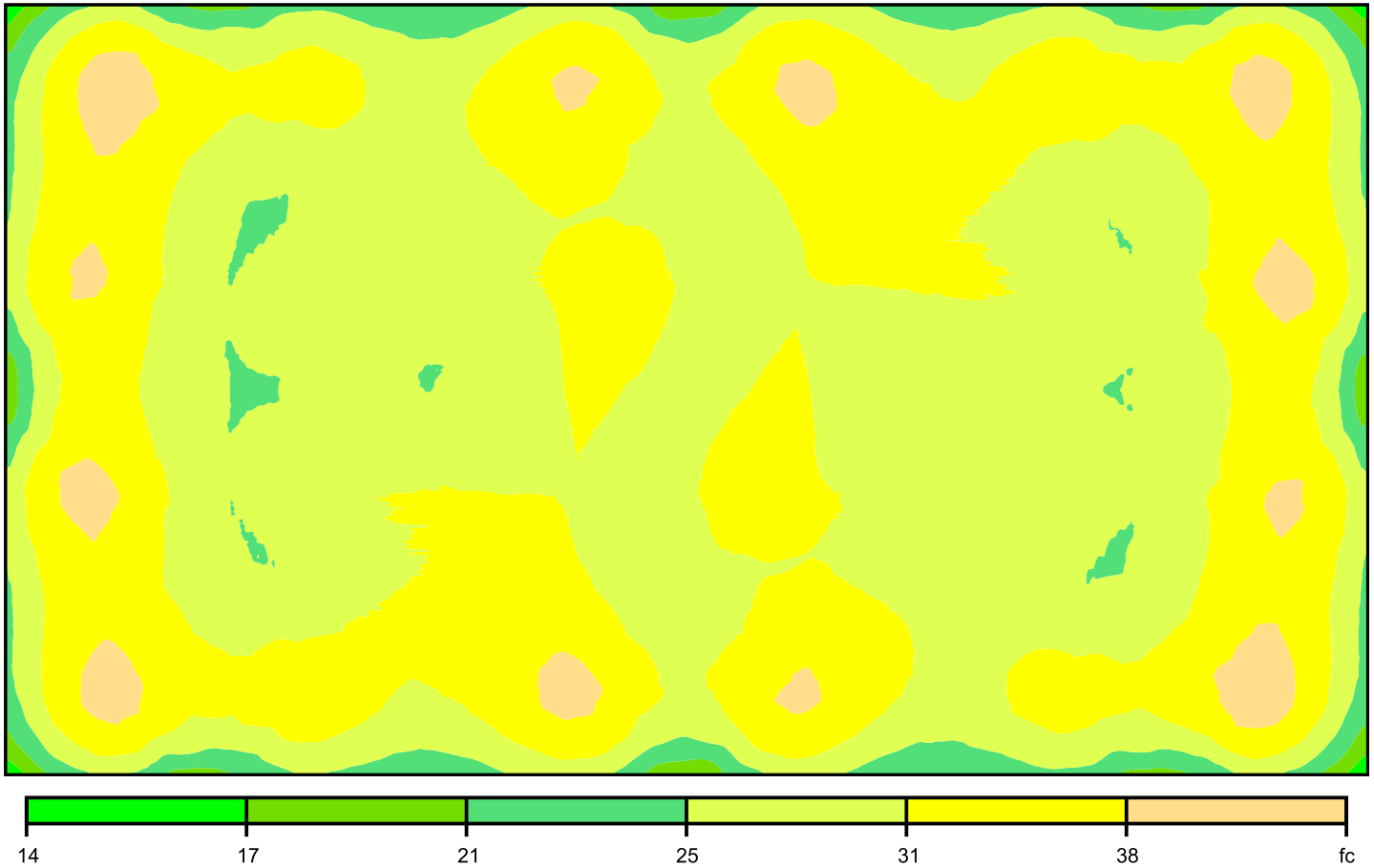
Height: 0.000 ft, Wall zone: 0.000 ft

Isolines [fc]



Scale: 1 : 371

False colors [fc]



Scale: 1 : 371

Value grid [fc]

+26	+36	+29	+29	+29	+26	+29	+35	+28	+27	+35	+30	+27	+30	+30	+29	+36	+27
+31	(40)	+33	+31	+31	+30	+33	+37	+31	+31	+38	+35	+32	+32	+32	+32	+39	+31
+31	+36	+28	(25)	+28	+29	+30	+32	+29	+27	+32	+33	+31	+30	+26	+28	+35	+31
+34	+36	+28	+27	+29	+30	+29	+33	+33	+27	+30	+32	+31	+30	+29	+29	+37	+35
+28	+34	+27	+28	+27	+26	+27	+32	+31	+28	+31	+27	+27	+28	+29	+28	+35	+29
+29	+35	+27	+28	+27	+27	+27	+31	+28	+31	+32	+27	+26	+28	+28	+28	+34	+28
+35	+37	+29	+28	+29	+31	+32	+30	+27	+33	+34	+29	+30	+30	+29	+29	+37	+34
+31	+35	+28	+26	+29	+31	+33	+32	+27	+29	+32	+30	+29	+28	+26	+29	+36	+31
+31	+38	+32	+32	+32	+32	+35	+38	+31	+31	+37	+33	+30	+31	+31	+33	(40)	+31
+27	+36	+28	+30	+30	+27	+30	+35	+27	+28	+35	+29	+26	+29	+29	+29	+36	+26

Scale: 1 : 371

Luminaire Layout Plan

