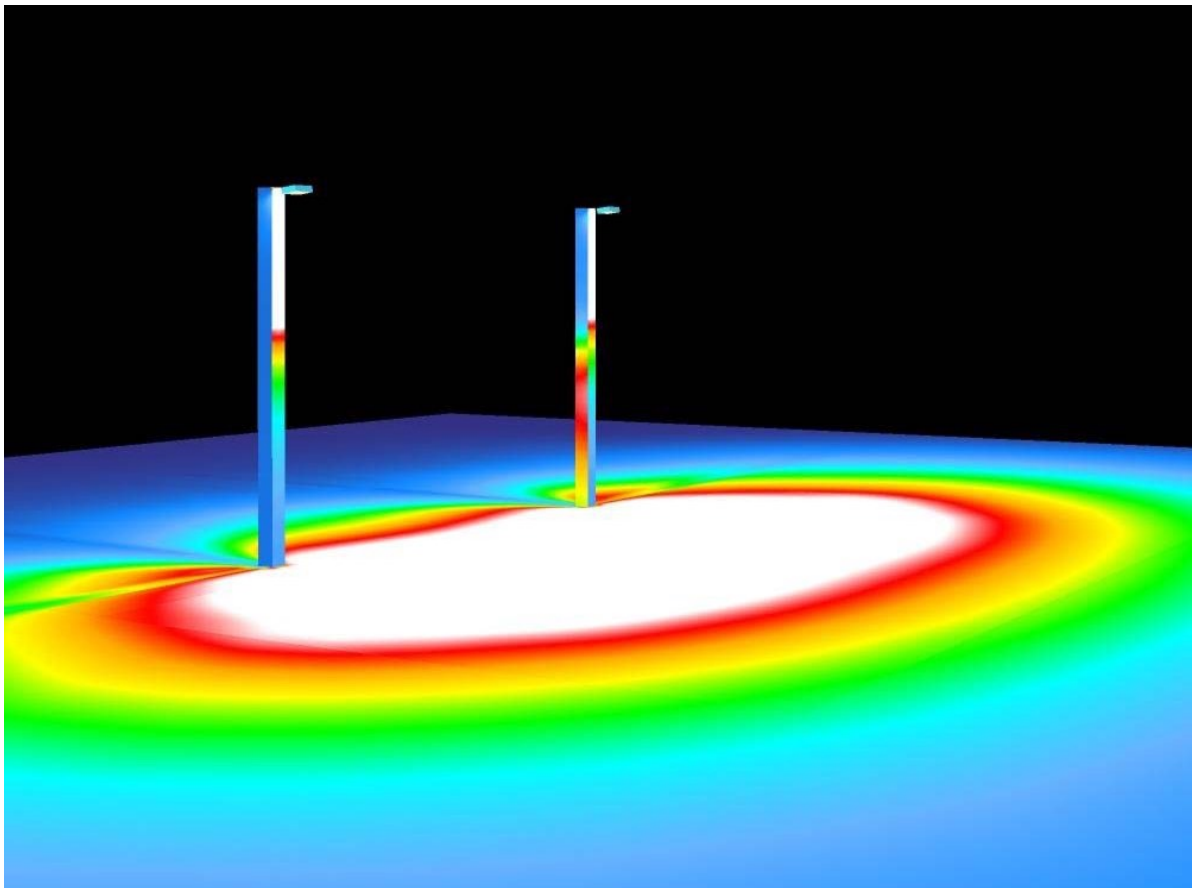


**Three 62' Dark Sky Compliant Bocce Courts  
2 Poles with 20' Mounting Height  
2 APTA 280 3000 Kelvin Luminaires  
Average 10 Footcandles Across 3 Courts  
2.0 Max/Min or Less on Each Court**



**This photometric study was generated using methods recommended by the Illuminating Engineering Society of North America (IESNA). The calculations in this report are based on data provided by a third party. The accuracy of this report is dependent on the accuracy of the data provided. End user environment and application including but not limited to voltage variation and dirt accumulation can cause actual photometric performance to differ from the performance calculated using the data provided. This report is provided without warranty as to accuracy, completeness, reliability or otherwise. In no event will Access Fixtures be responsible for any loss resulting from use of this report.**



## Table of contents

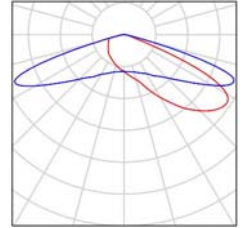
<b>Bocce Courts Lighting Project ZM-2020-1161</b>	
Project Cover	1
Table of contents	2
Luminaire parts list	3
<b>Exterior Scene 1</b>	
Planning data	4
Luminaires (layout plan)	5
Luminaires (coordinates list)	6
Calculation Grid (Coordinates List)	7
3D Rendering	8
False Colour Rendering	9
<b>Exterior Surfaces</b>	
<b>Calculation Grid 62X35</b>	
Value Chart (E, Perpendicular)	10



## Bocce Courts Lighting Project ZM-2020-1161 / Luminaire parts list

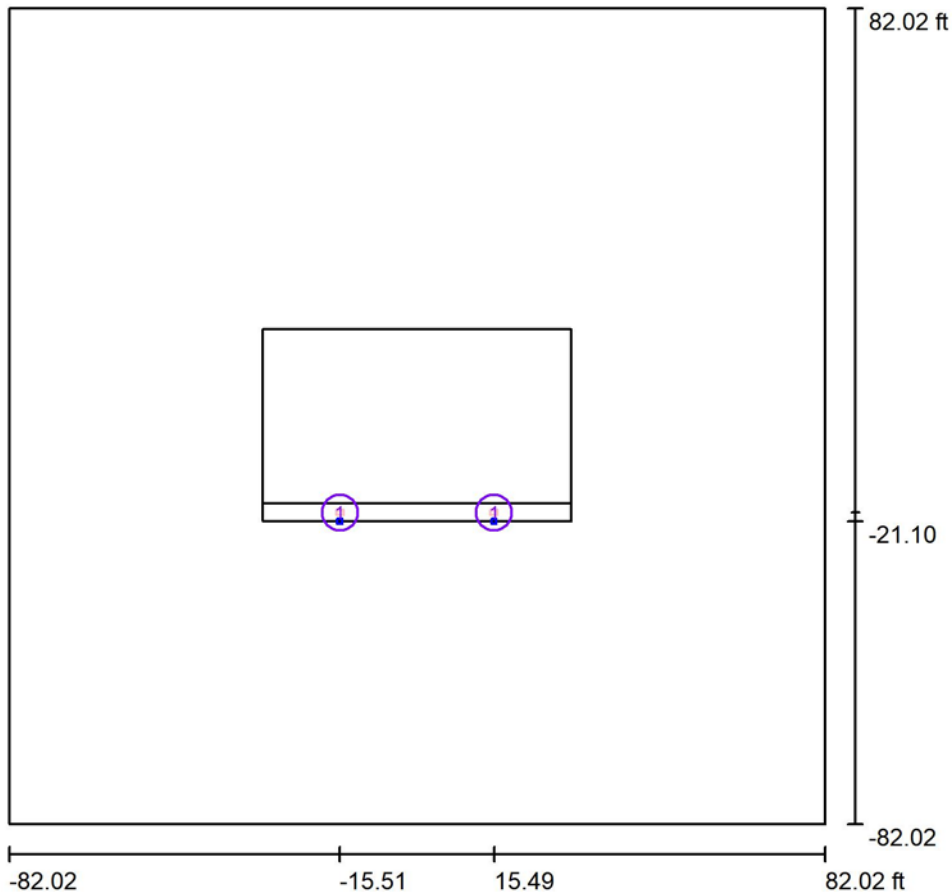
2 Pieces FLB280-T4M1-V5 30K-Area Light  
Article No.:  
Luminous flux (Luminaire): 33311 lm  
Luminous flux (Lamps): 33600 lm  
Luminaire Wattage: 271.0 W  
Luminaire classification according to CIE: 100  
CIE flux code: 23 60 96 100 99  
Fitting: 1 x User defined (Correction Factor 1.000).

See our luminaire catalog for an image of the luminaire.





**Exterior Scene 1 / Planning data**



Maintenance factor: 0.90, ULR (Upward Light Ratio): 0.0%

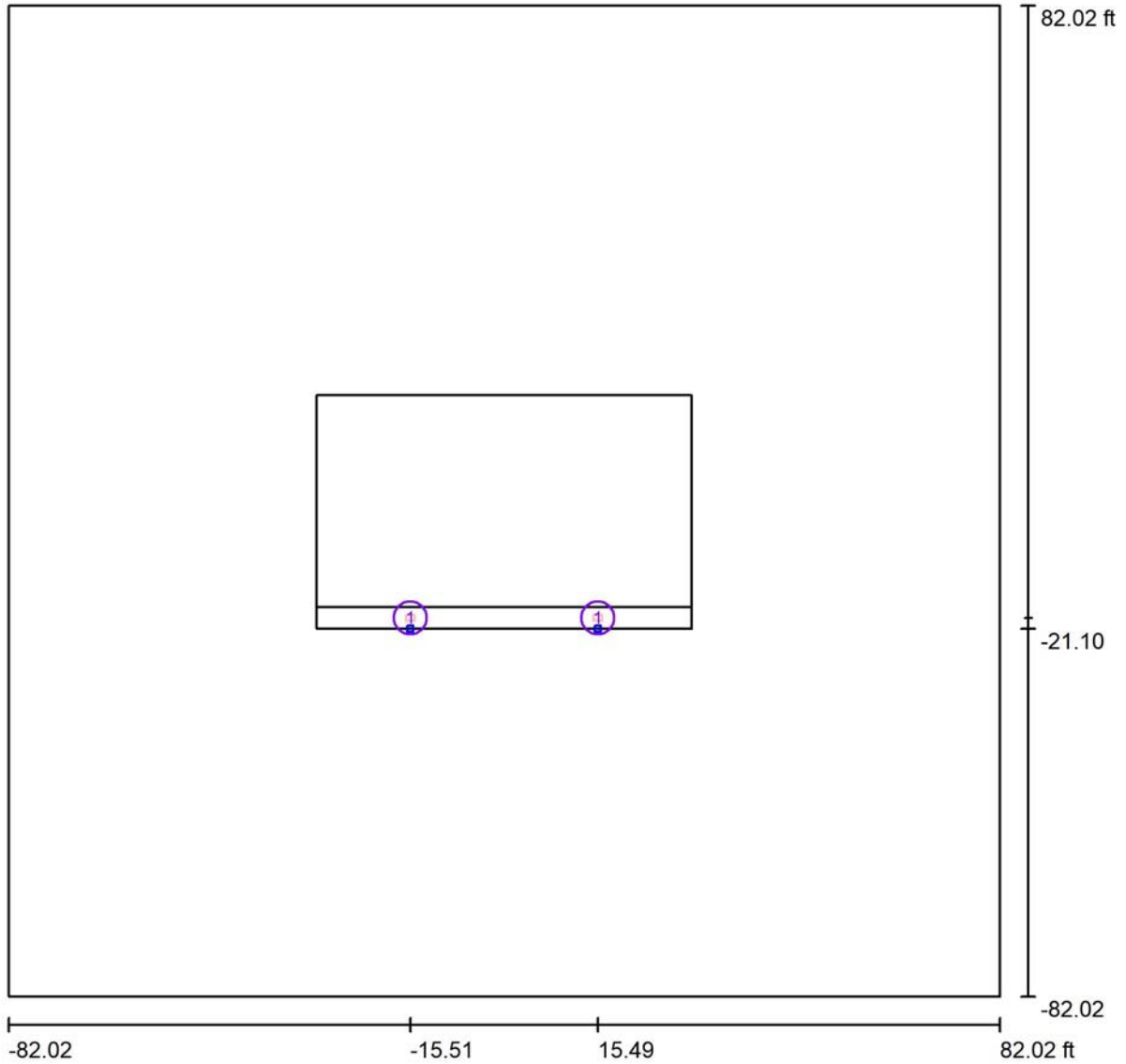
Scale 1:464

**Luminaire Parts List**

No.	Pieces	Designation (Correction Factor)	Φ (Luminaire) [lm]	Φ (Lamps) [lm]	P [W]
1	2	FLB280-T4M1-V5 30K-Area Light (1.000)	33311	33600	271.0
*Modified Technical Specifications			Total: 66622	Total: 67200	542.0



**Exterior Scene 1 / Luminaires (layout plan)**



Scale 1 : 358

**Luminaire Parts List**

No.	Pieces	Designation
1	2	FLB280-T4M1-V5 30K-Area Light

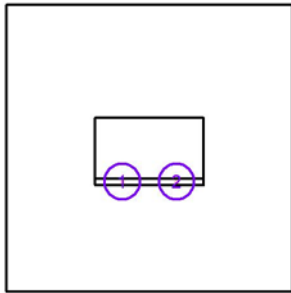
\*Modified Technical Specifications



**Exterior Scene 1 / Luminaires (coordinates list)**

**FLB280-T4M1-V5 30K-Area Light**

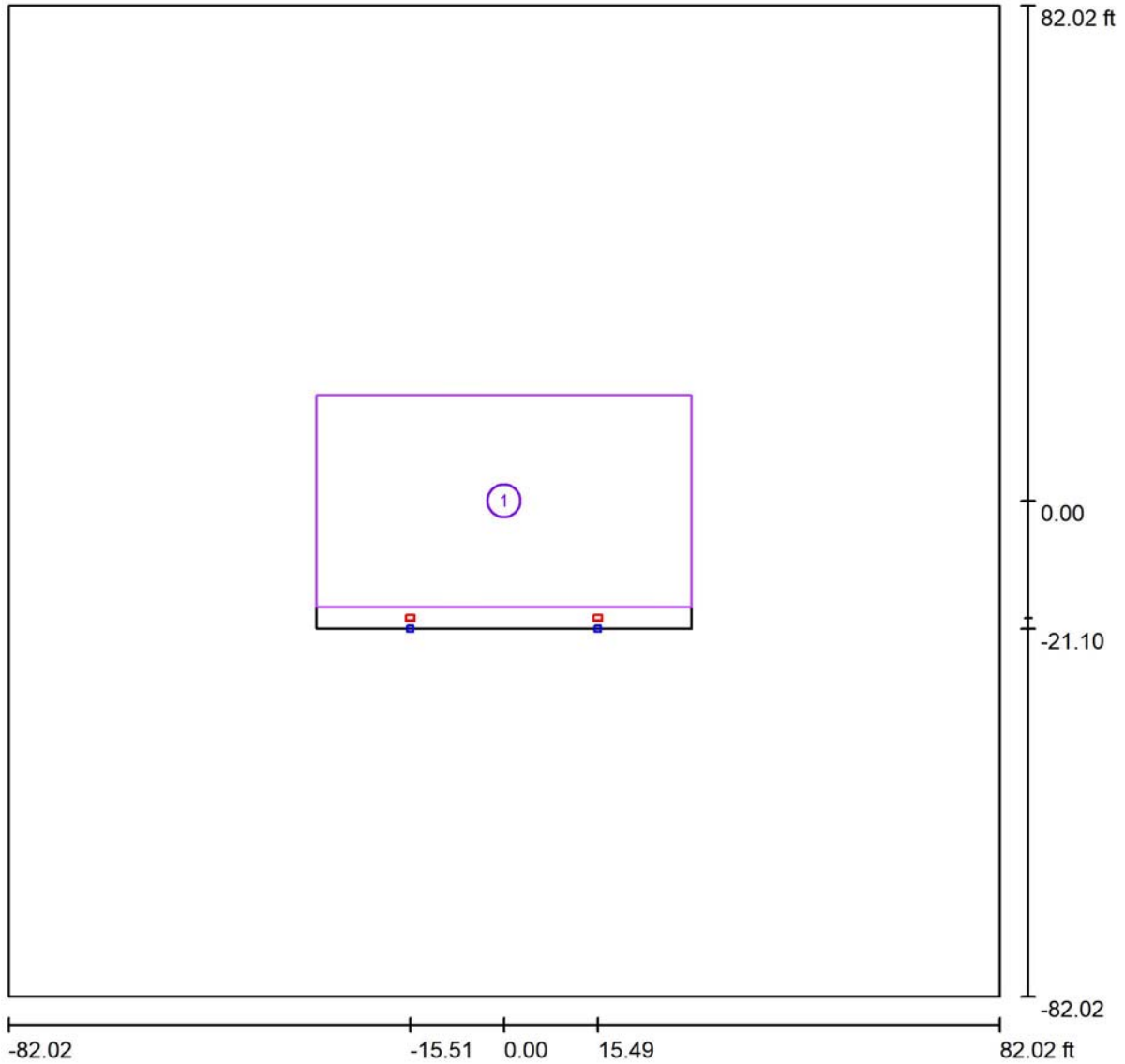
33311 lm, 271.0 W, 1 x 1 x User defined (Correction Factor 1.000).



No.	Position [ft]			Rotation [°]		
	X	Y	Z	X	Y	Z
1	-15.500	-19.300	20.000	7.0	0.0	0.0
2	15.500	-19.300	20.000	7.0	0.0	0.0



### Exterior Scene 1 / Calculation Grid (Coordinates List)



Scale 1 : 358

#### List of the Calculation Grids

No.	Designation	Position [ft]			Size [ft]		Rotation [°]		
		X	Y	Z	L	W	X	Y	Z
1	Calculation Grid 62X35	0.000	0.000	0.000	62.000	35.000	0.0	0.0	0.0

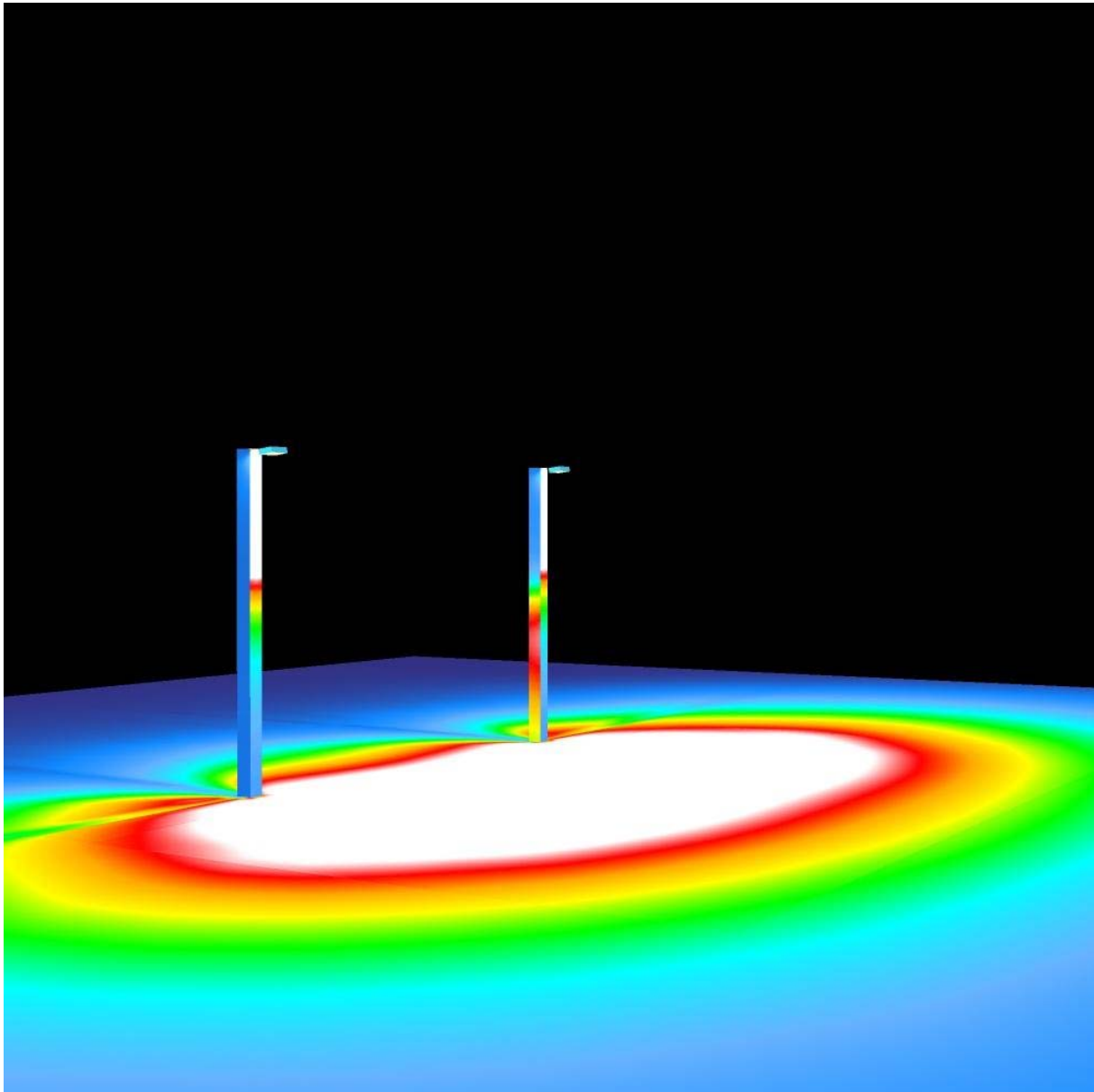


**Exterior Scene 1 / 3D Rendering**





Exterior Scene 1 / False Colour Rendering



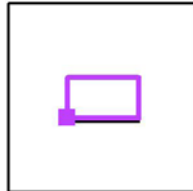
0 1.25 2.50 3.75 5.00 6.25 7.50 8.75 10.00 fc

**Exterior Scene 1 / Calculation Grid 62X35 / Value Chart (E, Perpendicular)**



Values in Footcandles, Scale 1 : 136

Position of surface in external scene:  
Marked point: (-31.000 ft, -17.500 ft, 0.000 ft)



Grid: 13 x 7 Points

$E_{av}$ [fc]	$E_{min}$ [fc]	$E_{max}$ [fc]	u0	$E_{min} / E_{max}$
10	5.04	15	0.49	0.34